

**Enrollment Report**  
**Office of the Registrar**  
**Fall 2015**  
**20161**  
**October 2, 2015**

## Index

Additional Information	27	Faculty FTE	8
Age	14	First Generation - Information	26
Athlete - Information	24	Full-time vs Part-time	23
Average Age	14	Gender	9
Average Student Load	8	High School - All Students	15-16
City	11	High School - New to Ancilla	17
Class	10	Marital Status	9
Cohort - First Time - Full-time	18	New to Ancilla - FT vs PT	18
Cohort - First Time - Part-time	18	Non Degree Students	27
Cohort Info	18	Number of Sections Offered	8
Concentration Information	19	Nursing - Information	25
Concentrations - All Chart	20-21	Online Courses - Sections Offered	8
Concentrations - CIP Codes	22	Religion	10
Concentrations - Other - Chart	20	Retention - 1st Term Freshman	6
Concentrations - Top - Chart	19	Retention - All Freshman	2
Concentrations by Class	10 & 22	Retention - All Students	2
Concentrations by Entry Code	21	Retention - Athletes	7
Concentrations by Full-time/PT	19	Retention - Charts	2-5, 7
Concentrations by Gender	21	Retention - Sophomores	6
Concentrations by Trad/Non Trad	19	Student FTE	8
Country	13	Student/Faculty Ratio	8
County	12	Top High School Chart	17
Credit Hours by Class	27	Trad - Non Trad Chart	14
Credit Hours by College	1	Web Assisted Courses - Sections Offered	8
Credit Hours by Gender	9		
Entry Code	1		
Ethnicity	9		

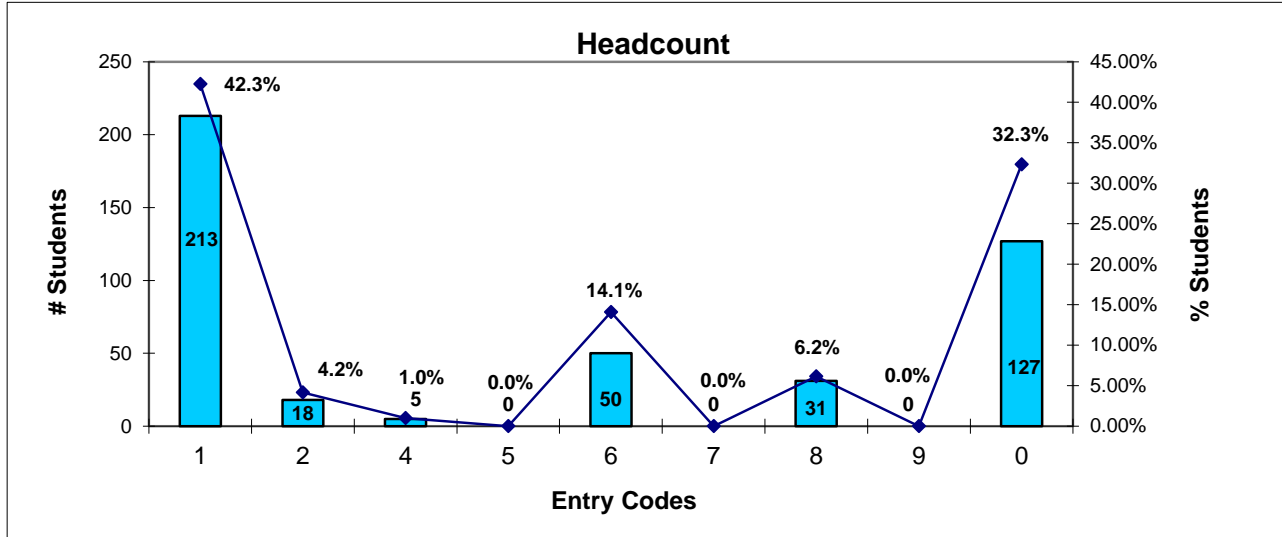
**Notes:**

Page 8 - Student Faculty Ratio: New formula used to determine Student/ Faculty Ratio

FTE Students ÷ FTE Faculty = Student Faculty Ratio

(old formula: Total # Students ÷ FTE Faculty = Student/Faculty Ratio)

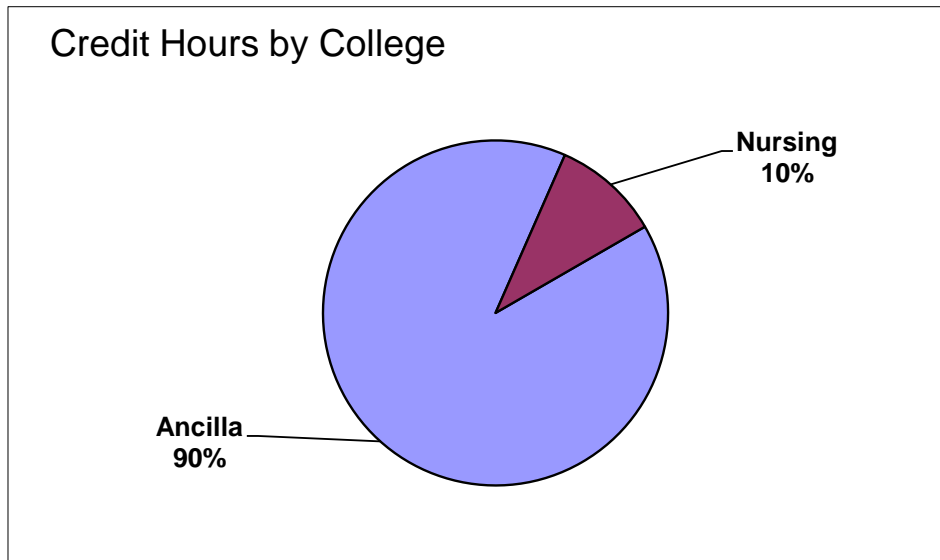
Headcount	Entry Codes									
	New 1	Re-entry 2	Early Bird 4	Guest 5	Transfer 6	WBIY 7	Dual Credit 8	Non-Degree 9	Continuing 0	Total
Ancilla	213	18	5	0	50	0	31	0	127	444
Nursing	0	3	0	0	21	0	0	0	36	60
<b>Total</b>	<b>213</b>	<b>21</b>	<b>5</b>	<b>0</b>	<b>71</b>	<b>0</b>	<b>31</b>	<b>0</b>	<b>163</b>	<b>504</b>
<b>Total Percent</b>	<b>42.26%</b>	<b>4.17%</b>	<b>0.99%</b>	<b>0.00%</b>	<b>14.09%</b>	<b>0.00%</b>	<b>6.15%</b>	<b>0.00%</b>	<b>32.34%</b>	<b>100%</b>



Credit Hours by College	
College	Credit Hours
Ancilla	5630
Nursing	631
<b>Total</b>	<b>6261</b>

Headcount	New	Re-entry	Continuing	Total
Degree Seeking	213	14	163	390
Transfer	71	7	0	78
Guest	0	0	0	0
Audit	0	0	0	0
WBIY	0	0	0	0
Early Bird	2	0	3	5
Dual Credit	30	0	1	31
	<b>316</b>	<b>21</b>	<b>167</b>	<b>504</b>

\*\*Audit credits are not counted in the overall credit total.



# Retention Report

## Spring to Fall - All

Fall	Previous Spring Headcount (less Grads)	Headcount Enrolled for Fall (incl. Grad Appl)	%
2015	290	165	56.90%
2014	305	159	52.13%
2013	331	189	57.10%
2012	387	226	58.40%
2011	443	272	61.40%
2010	463	280	60.48%
2009	433	268	61.89%
2008	390	225	57.69%
2007	385	251	65.19%
2006	433	247	57.04%
2005	530	359	67.74%

## Fall to Fall - All

Fall 2014	Previous Fall Headcount (less Grads)	Headcount Enrolled for Fall (incl. Grad Appl)	%
2014-2015	339	149	43.95%
2013-2014	354	147	41.53%
2012-2013	374	170	45.45%
2011-2012	442	204	46.15%
2010-2011	478	232	48.54%
2009-2010	476	238	50.00%
2008-2009	418	215	51.44%
2007-2008	406	200	49.26%
2006-2007	407	222	54.55%
2005-2006	504	227	45.04%
2004-2005	620	317	51.13%

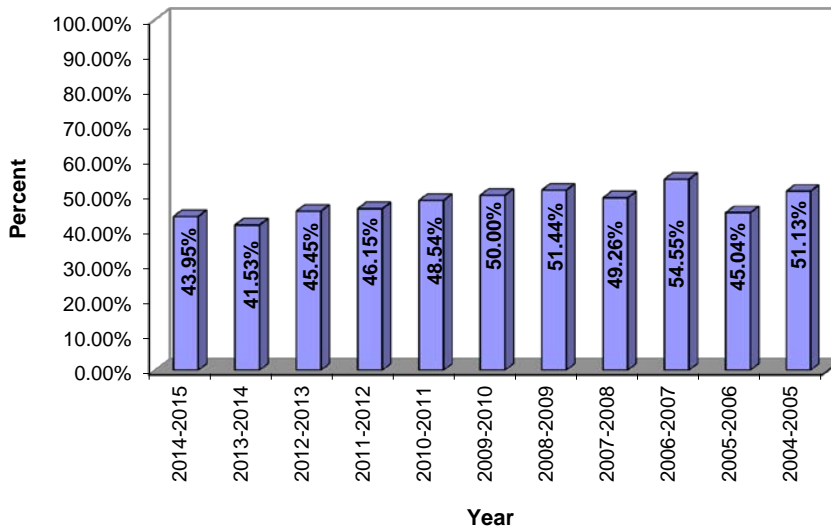
## Spring to Fall - All Freshman

Fall	Previous Spring Freshman Headcount	Headcount Enrolled for Fall	%
2015	199	123	61.81%
2014	213	117	54.93%
2013	190	115	60.53%
2012	228	133	58.33%
2011	284	166	58.45%
2010	310	179	57.74%
2009	294	180	61.22%
2008	244	143	58.61%
2007	223	142	63.68%
2006	243	143	58.85%
2005	310	218	70.32%

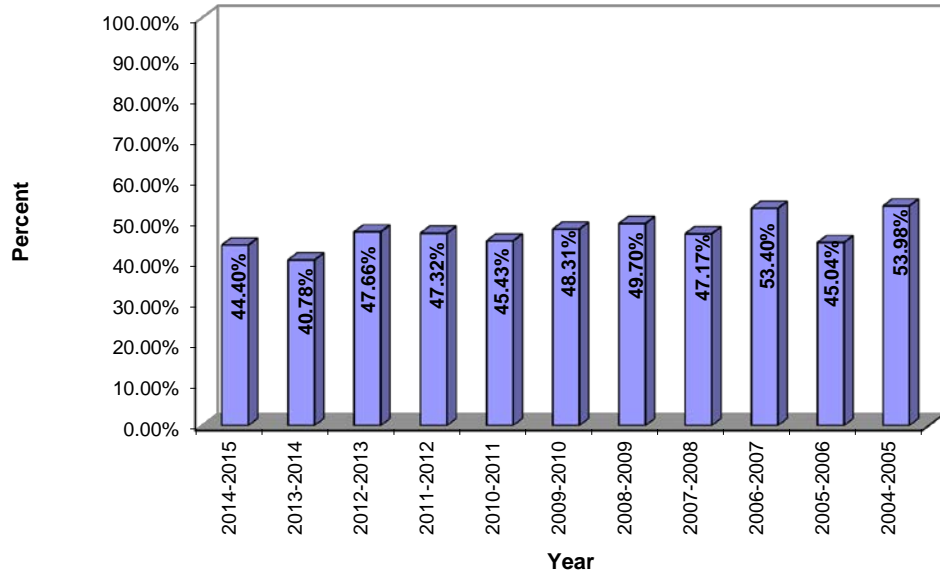
## Fall to Fall - All Freshman

Fall 2014	Previous Fall Freshman Headcount	Headcount Enrolled for Fall	%
2014-2015	268	119	44.40%
2013-2014	282	115	40.78%
2012-2013	256	122	47.66%
2011-2012	317	150	47.32%
2010-2011	394	179	45.43%
2009-2010	385	186	48.31%
2008-2009	330	164	49.70%
2007-2008	318	150	47.17%
2006-2007	294	157	53.40%
2005-2006	504	227	45.04%
2004-2005	415	224	53.98%

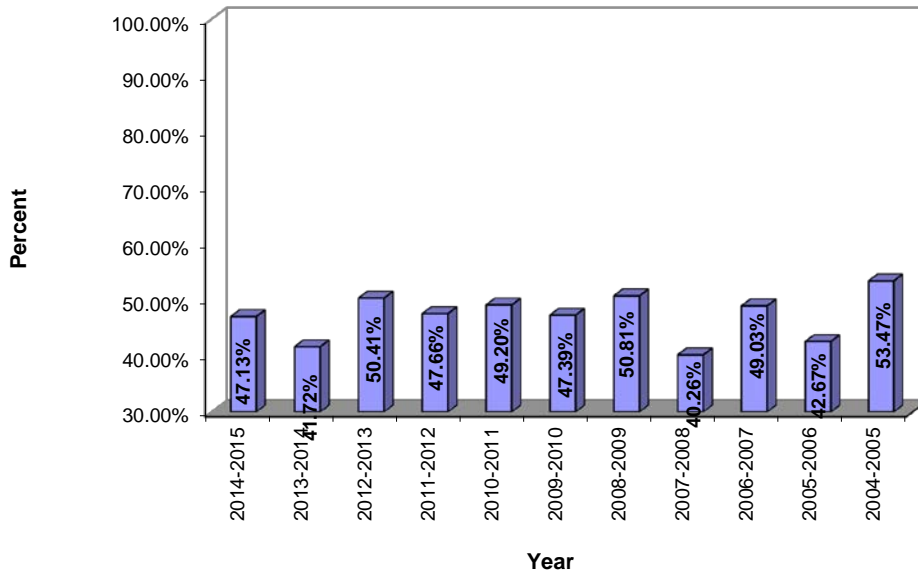
**Retention - Fall to Fall - All Students**



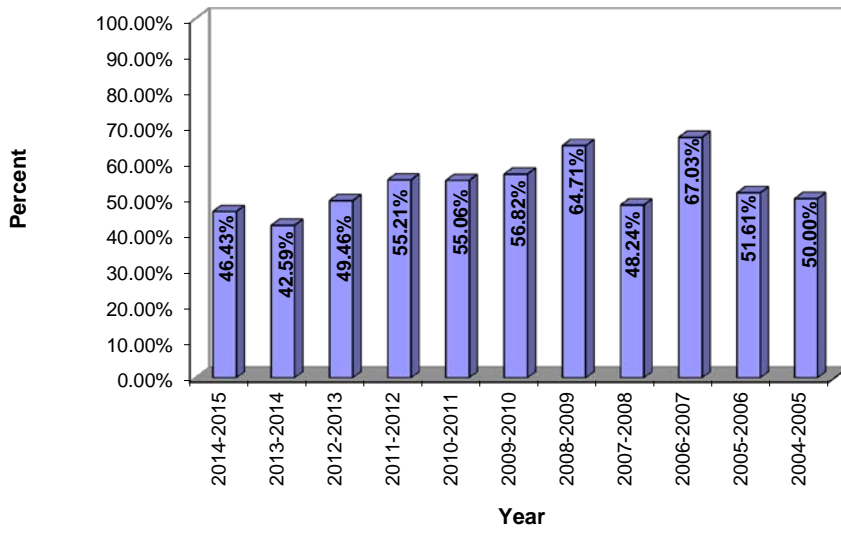
### Retention - Fall to Fall - All Freshman



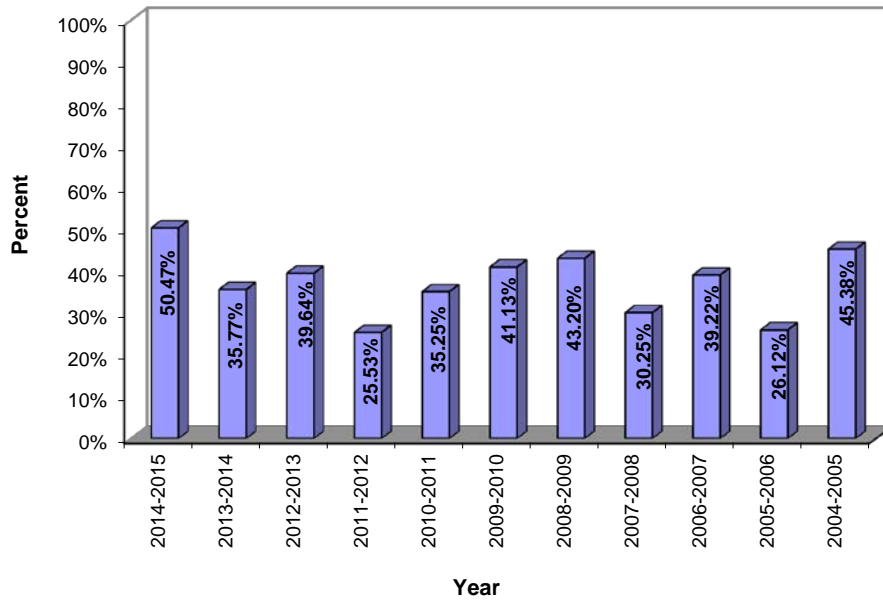
### Retention - Fall to Fall - 1st Term Freshman



### Retention - Fall to Fall - Sophomores



### Retention - Fall to Fall - Athletes



# Retention Report

## Spring to Fall - 1st Term Freshman

Fall	Previous Spring 1st Term Freshman Headcount	Headcount Enrolled for Fall	%
2015	25	13	52.00%
2014	24	8	33.33%
2013	17	12	70.59%
2012	20	8	40.00%
2011	20	12	60.00%
2010	56	35	62.50%
2009	69	43	62.32%
2008	15	10	66.67%
2007	11	7	63.64%
2006	18	9	50.00%
2005	29	19	65.52%

## Fall to Fall - 1st Term Freshman

Fall 2014	Previous Fall 1st Term Freshman Headcount	Headcount Enrolled for Fall	%
2014-2015	174	82	47.13%
2013-2014	151	63	41.72%
2012-2013	121	61	50.41%
2011-2012	128	61	47.66%
2010-2011	187	92	49.20%
2009-2010	211	100	47.39%
2008-2009	185	94	50.81%
2007-2008	154	62	40.26%
2006-2007	155	76	49.03%
2005-2006	150	64	42.67%
2004-2005	202	108	53.47%

## Spring to Fall - Sophomores

Fall	Previous Spring Sophomore Headcount (less Grads)	Headcount Enrolled for Fall (incl. Grad Appl)	%
2015	69	36	52.17%
2014	65	32	49.23%
2013	124	71	57.26%
2012	140	89	63.57%
2011	132	89	67.42%
2010	149	100	67.11%
2009	122	81	66.39%
2008	145	74	51.03%
2007	137	102	74.45%
2006	158	97	61.39%
2005	177	128	72.32%

## Fall to Fall - Sophomores

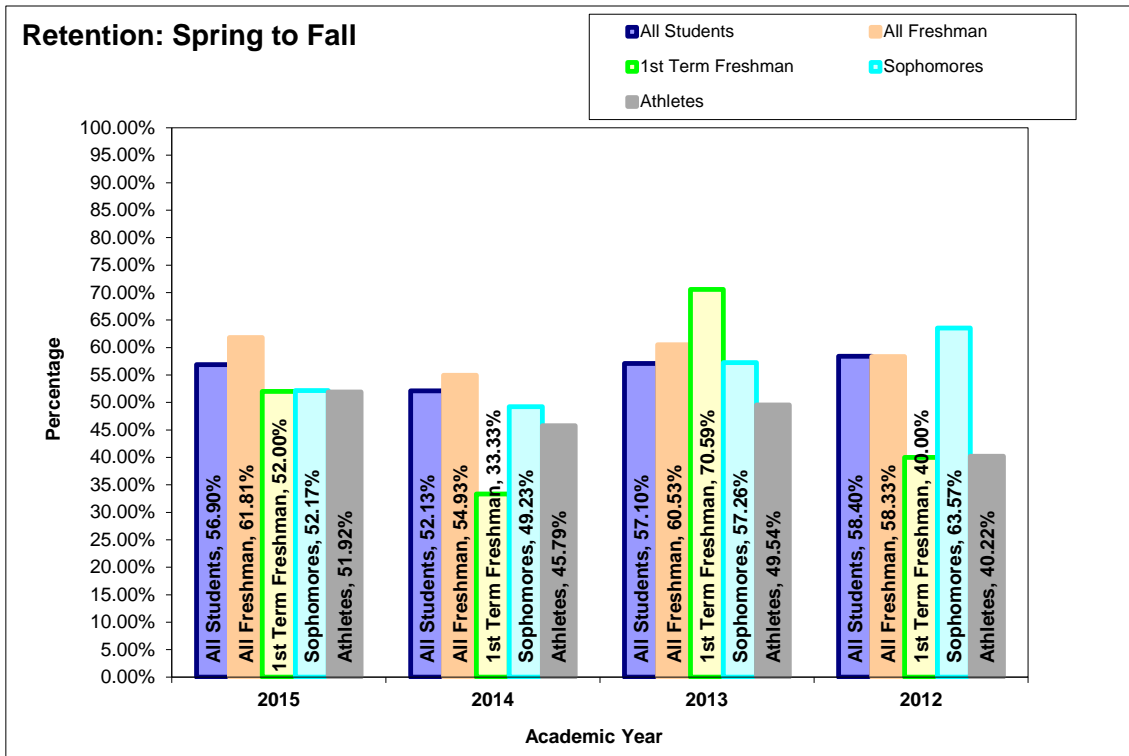
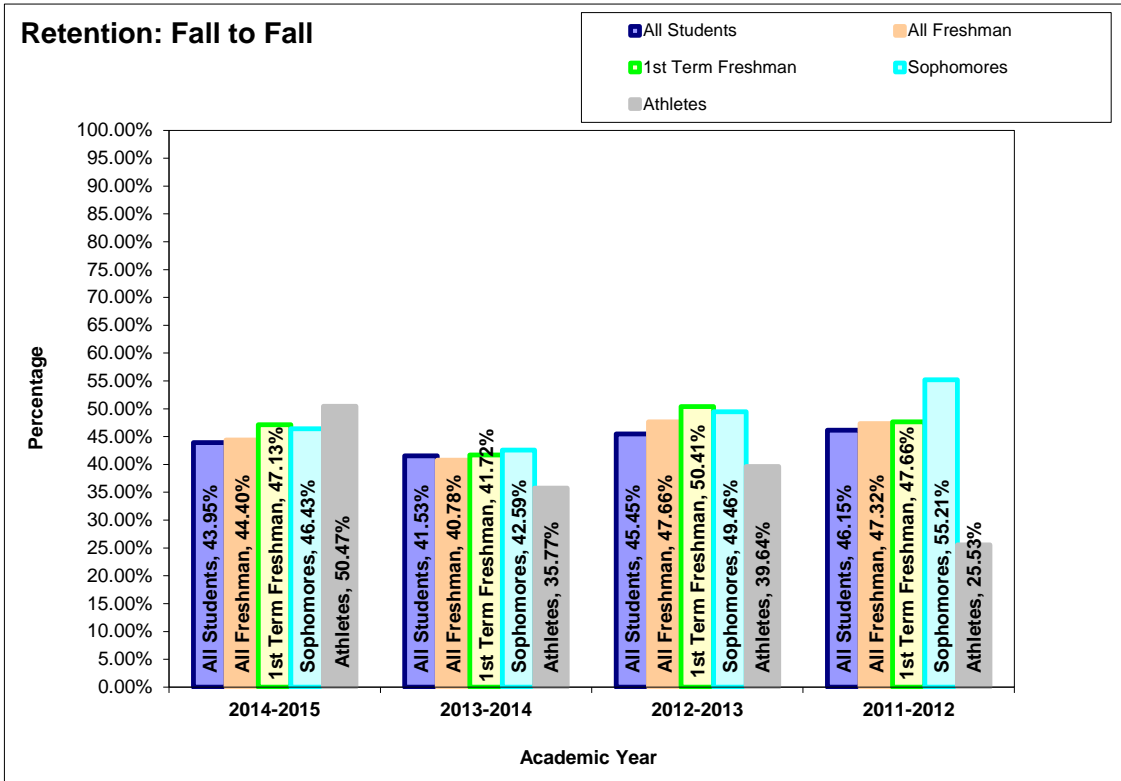
Fall 2014	Previous Fall Sophomore Headcount (less Grads)	Headcount Enrolled for Fall (incl. Grad Appl)	%
2014-2015	56	26	46.43%
2013-2014	54	23	42.59%
2012-2013	93	46	49.46%
2011-2012	96	53	55.21%
2010-2011	89	49	55.06%
2009-2010	88	50	56.82%
2008-2009	68	44	64.71%
2007-2008	85	41	48.24%
2006-2007	91	61	67.03%
2005-2006	124	64	51.61%
2004-2005	160	80	50.00%

## Spring to Fall - Athletes

Fall	Previous Spring Athlete Headcount (less Grads)	Headcount Enrolled for Fall (incl. Grad Appl)	%
2015	104	54	51.92%
2014	107	49	45.79%
2013	109	54	49.54%
2012	92	37	40.22%
2011	115	51	44.35%
2010	107	55	51.40%
2009	114	57	50.00%
2008	132	47	35.61%
2007	78	41	52.56%
2006	102	37	36.27%
2005	108	63	58.33%

## Fall to Fall - Athletes

Fall 2013	Previous Fall Athlete Headcount (less Grads)	Headcount Enrolled for Fall (incl. Grad Appl)	%
2014-2015	107	54	50.47%
2013-2014	137	49	35.77%
2012-2013	111	44	39.64%
2011-2012	141	36	25.53%
2010-2011	139	49	35.25%
2009-2010	124	51	41.13%
2008-2009	125	54	43.20%
2007-2008	162	49	30.25%
2006-2007	102	40	39.22%
2005-2006	134	35	26.12%
2004-2005	130	59	45.38%





### Fall 2015 Demographics

#### Faculty FTE

Fall 2010 - 20111	32.80
Fall 2011 - 20121	30.60
Fall 2012 - 20131	31.88
Fall 2013 - 20141	27.93
Fall 2014 - 20151	27.07
<b>Fall 2015 - 20161</b>	<b>30.67</b>

#### Average Student Load

Fall 2010 - 20111	11.64
Fall 2011 - 20121	11.13
Fall 2012 - 20131	11.11
Fall 2013 - 20141	11.56
Fall 2014 - 20151	12.06
<b>Fall 2015 - 20161</b>	<b>12.42</b>

#### Student FTE (at 15 credits)

Fall 2010 - 20111	458.70
Fall 2011 - 20121	395.60
Fall 2012 - 20131	326.73
Fall 2013 - 20141	326.73
Fall 2014 - 20151	321.47
<b>Fall 2015 - 20161</b>	<b>417.40</b>

#### Num. of Sections Offered

Fall 2010 - 20111	128
Fall 2011 - 20121	126
Fall 2012 - 20131	129
Fall 2013 - 20141	134
Fall 2014 - 20151	134
<b>Fall 2015 - 20161</b>	<b>146</b>

#### Student/Faculty Ratio

Fall 2010 - 20111	13.98 : 1
Fall 2011 - 20121	14.23 : 1
Fall 2012-20131*	10.20 : 1
Fall 2013 - 20141	11.70 : 1
Fall 2014 - 20151	11.88 : 1
<b>Fall 2015 - 20161</b>	<b>13.61:1</b>

#### Num. of Web Assisted Courses

Fall 2011 - 20121	53
Fall 2012 - 20131	55
Fall 2013 - 20141	66
Fall 2014 - 20151	81
<b>Fall 2015 - 20161</b>	<b>102</b>

\*See Note - Index Page

#### Num. of Online Courses

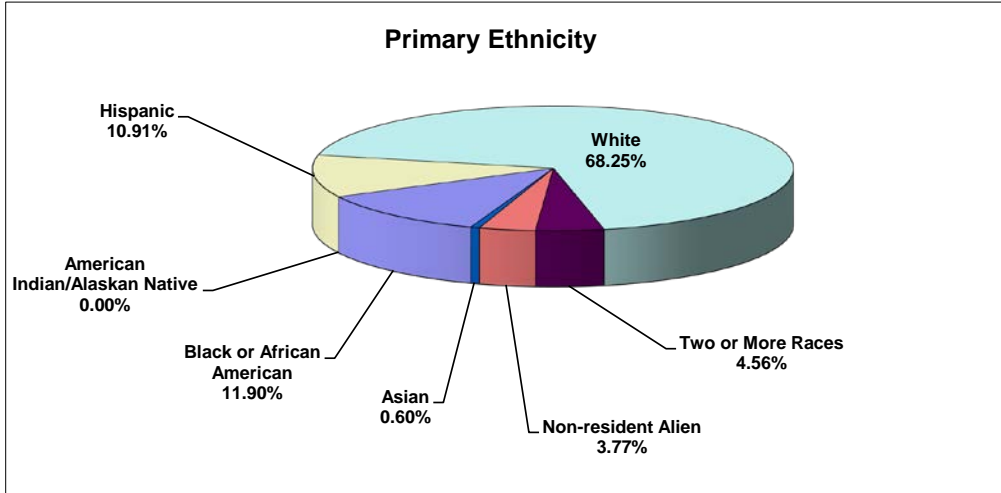
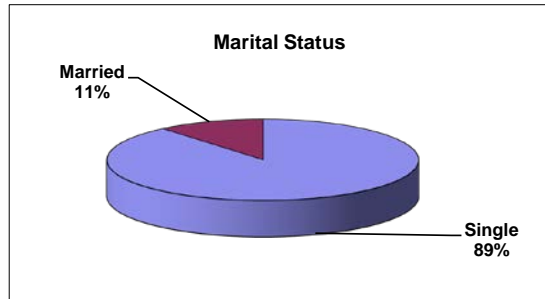
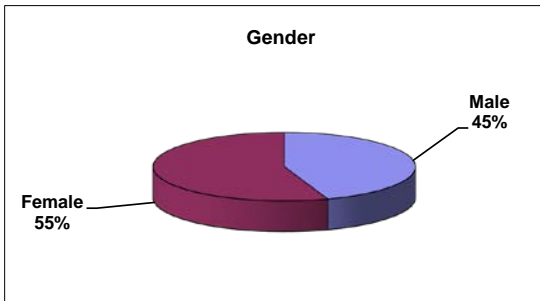
Fall 2011 - 20121	9
Fall 2012 - 20131	14
Fall 2013 - 20141	17
Fall 2014 - 20151	15
<b>Fall 2015 - 20161</b>	<b>24</b>

## Demographic Data

Gender	Count	Credits	Percent
Male	225	2879	44.64%
Female	279	3382	55.36%
	504	6261	100%

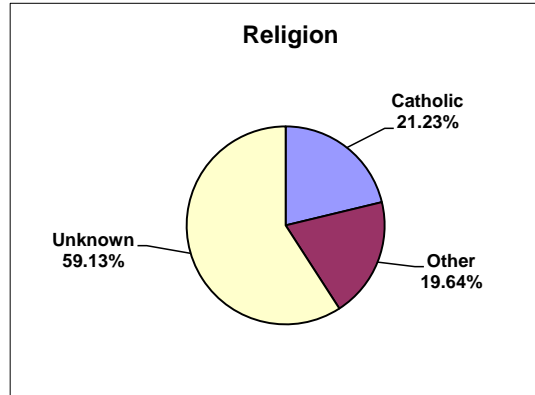
Marital Status	Count	Credits	Percent
Single	448	5723	88.89%
Married	56	538	11.11%
	504	6261	100%

Primary Ethnicity	Count	Percent
Black or African American	60	11.90%
American Indian/Alaskan Native	0	0.00%
Hispanic	55	10.91%
White	344	68.25%
Two or More Races	23	4.56%
Non-resident Alien	19	3.77%
Asian	3	0.60%
	504	100.00%

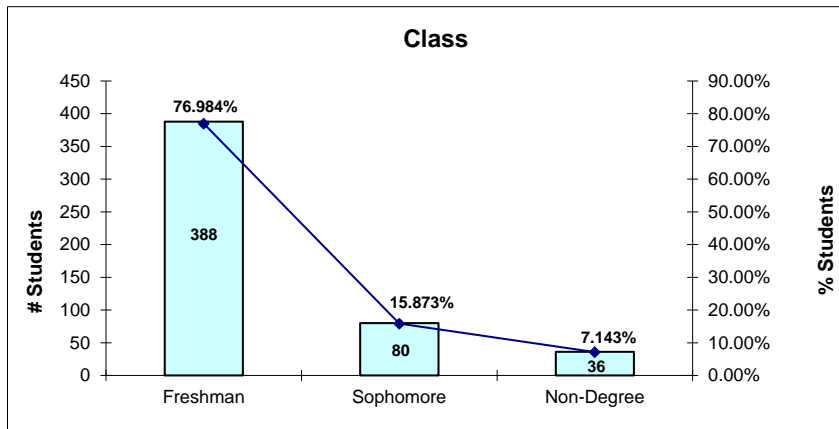


## Demographic Data

Religion	
Religion	Count
Baptist	8
Bretheran	1
Catholic	107
Christian	38
Lutheran	6
Methodist	4
Muslim	1
Non-Catholic	33
Non-Denominational	3
Pentecostal	2
Protestant	2
Other Protestant	1
Unknown Religion	298
<b>Total</b>	<b>504</b>



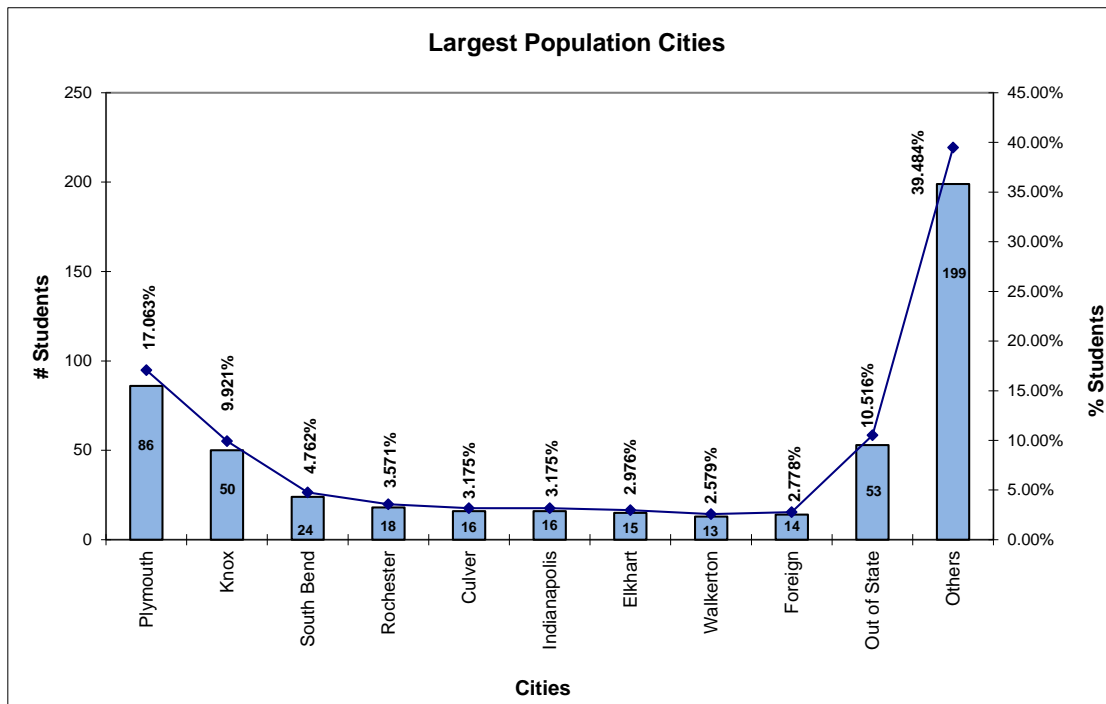
Religion		
Catholic	107	21.23%
Other	99	19.64%
Unknown	298	59.13%
<b>Total</b>	<b>504</b>	<b>100%</b>



Entry Code	Class			Total	Percent
	Freshman	Sophomore	Non-Degree		
New	213	0	0	213	42.26%
Re-entry	10	11	0	21	4.17%
Early Bird	0	0	5	5	0.99%
Guest	0	0	0	0	0.00%
Transfer	70	1	0	71	14.09%
WBIY	0	0	0	0	0.00%
Dual Credit	0	0	31	31	6.15%
Audit	0	0	0	0	0.00%
Continuing	95	68	0	163	32.34%
<b>Total</b>	<b>388</b>	<b>80</b>	<b>36</b>	<b>504</b>	<b>100.00%</b>
<b>Percent</b>	<b>76.984%</b>	<b>15.873%</b>	<b>7.143%</b>		

### Demographic Data: Headcount by City of Permanent Residence

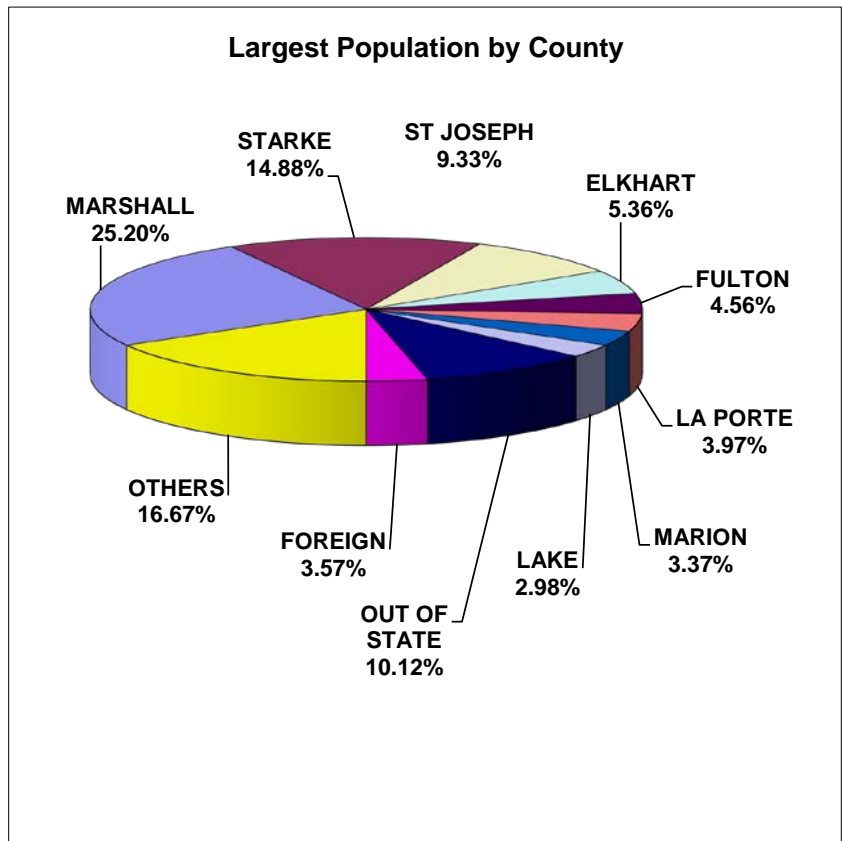
City	Count	City	Count	City	Count	Largest Population by City		
Anderson	1	Greentown	1	New Whiteland	1	Plymouth	86	17.06%
Andrews	1	Greenwood	3	Noblesville	2	Knox	50	9.92%
Argos	1	Grovetown	4	North Judson	10	South Bend	24	4.76%
Argos	10	Hamlet	2	North Liberty	5	Rochester	18	3.57%
Avon	1	Hobart	1	Out of State	53	Culver	16	3.17%
Avon	3	Hope	1	Peru	2	Indianapolis	16	3.17%
Bargersville	1	Indianapolis	16	Plymouth	86	Elkhart	15	2.98%
Bourbon	6	Jeffersonville	1	Portage	1	Walkerton	13	2.58%
Bremen	1	Kewanna	1	Rensselaer	1	Foreign	14	2.78%
Bremen	12	Knox	50	Richmond	1	Out of State	53	10.52%
Bristol	2	Kokomo	1	Rochester	18	Others	199	39.48%
Brookston	1	Kouts	1	Rockville	1	<b>Totals</b>	<b>504</b>	<b>100%</b>
Brownsburg	2	La Porte	9	Rossville	1			
Carmel	1	Lafayette	2	Royal Center	1			
Chesterton	4	Lake Station	1	San Pierre	1			
Claypool	1	Lakeville	3	Schererville	3			
Crown Point	1	LaPaz	1	South Bend	24			
Culver	16	Lapaz	1	Syracuse	1			
Demotte	4	Leiters Ford	1	Thorntown	1			
Denver	1	Ligonier	3	Topeka	1			
Donaldson	2	Marion	2	Tyner	2			
Dyer	1	Markle	1	Union City	1			
Elkhart	15	Medaryville	1	Union Mills	1			
Fishers	1	Merrillville	3	Valparaiso	6			
Fort Wayne	1	Michigan City	4	Walkerton	13			
Franklin	2	Middlebury	3	Wanatah	1			
Frankton	1	Mishawaka	2	Warsaw	5			
Foreign	14	Monterey	3	Westfield	1			
Gary	4	Morgantown	1	Westville	4			
Gas City	1	Muncie	1	Wheatfield	1			
Goshen	5	New Carlisle	2	Whiting	1			
Granger	1	New Castle	2	Winamac	7			
				Zionsville	1			
				<b>Total Count</b>	<b>504</b>			



## Demographic Data: Headcount by County of Original Residence

Counties	Count
ALLEN	1
BARTHOLOMEW	1
BOONE	2
CASS	1
CLARK	1
CLINTON	2
DELAWARE	1
ELKHART	27
FOREIGN	18
FULTON	23
GRANT	3
HAMILTON	5
HENDRICKS	4
HENRY	1
HOWARD	2
HUNTINGTON	1
JASPER	6
JOHNSON	7
KOSCIUSKO	7
LAGRANGE	1
LAKE	15
LA PORTE	20
MADISON	2
MARION	17
MARSHALL	127
MIAMI	2
MORGAN	1
NOBLE	3
OUT OF STATE	51
PARKE	1
PORTER	12
PULASKI	11
RANDOLPH	1
ST JOSEPH	47
STARKE	75
TIPPECANOE	2
WAYNE	1
WELLS	1
WHITE	1
<b>Total</b>	<b>504</b>

Largest Population by County		
MARSHALL	127	25.20%
STARKE	75	14.88%
ST JOSEPH	47	9.33%
ELKHART	27	5.36%
FULTON	23	4.56%
LA PORTE	20	3.97%
MARION	17	3.37%
LAKE	15	2.98%
OUT OF STATE	51	10.12%
FOREIGN	18	3.57%
OTHERS	84	16.67%
<b>Total</b>	<b>504</b>	<b>100%</b>



## Demographic Data

### Country of Birth

Birth Country	Count
Australia	1
Canada	4
Cape Verde	7
Croatia	1
Ecuador	4
El Salvador	1
Haiti	1
Japan	1
Mexico	10
Panama	1
Romania	2
Senegal	1
United Kingdom	6
United States	462
Vietnam	2
<b>Total</b>	<b>504</b>

### Country of Citizenship

Citizenship Country	Count
Australia	1
canada	4
Croatia	1
Ecuador	4
El Salvador	1
Haiti	1
Mexico	11
Panama	1
United Kingdom	6
United States	472
Vietnam	2
<b>Total</b>	<b>504</b>

### Country of Current Residence

Residence Country	Count
United States	504

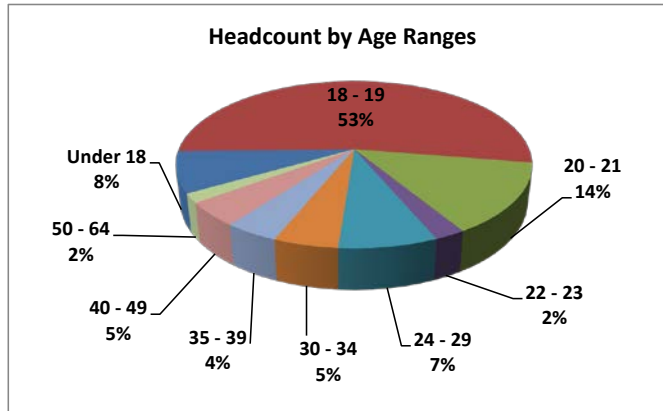
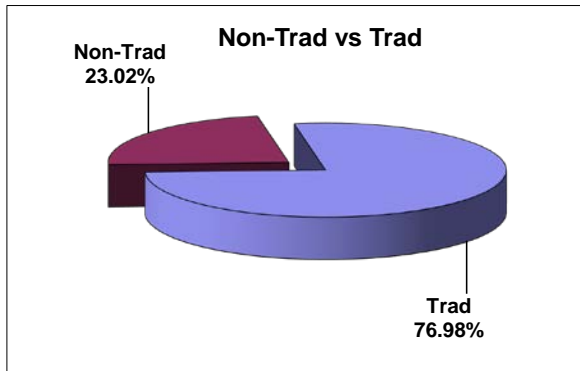


### Demographic Data: Student Ages

Headcount by Age	
Age Range	Count
Under 18	40
18 - 19	267
20 - 21	69
22 - 23	12
24 - 29	38
30 - 34	25
35 - 39	21
40 - 49	23
50 - 64	9
<b>Total</b>	<b>504</b>

	Count	Percent	Average Age
Trad	388	76.98%	18.8
Non-Trad	116	23.02%	35.2
	504	100.00%	22.6

Average Age			
Semester & Code	All	Non-Trad	Trad
Fall 2009 - 20101	25.60	34.80	19.60
Fall 2010 - 20111	26.00	35.20	19.50
Fall 2011 - 20121	25.98	35.65	19.68
Fall 2012 - 20131	25.77	35.92	19.54
Fall 2013 - 20141	24.50	35.41	19.37
Fall 2014 - 20151	23.42	35.33	19.12
<b>Fall 2015 - 20161</b>	<b>22.55</b>	<b>18.77</b>	<b>35.20</b>

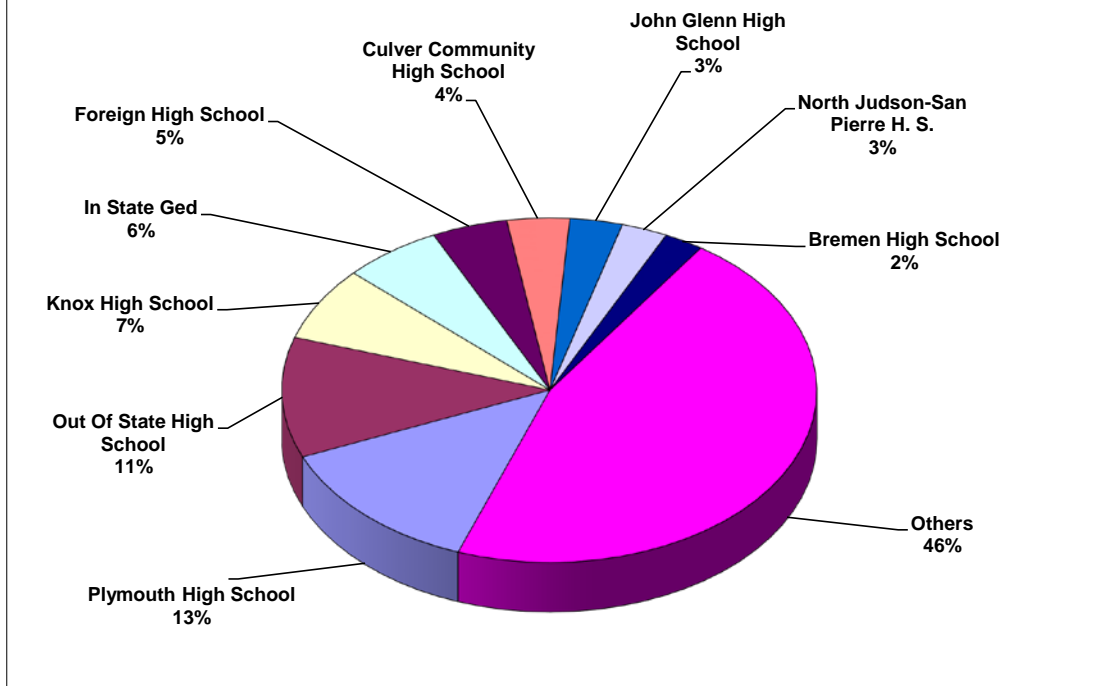




### Demographic Data

High Schools - All Ancilla Students					
High Schools - All Students	Code	Count	High Schools - All Students	Code	Count
<u>High School Name</u>	<u>HS Code</u>	<u>HC</u>	<u>High School Name</u>	<u>HS Code</u>	<u>HC</u>
Anderson Preparatory Academy	150051	1	Memorial, Elkhart High School	150916	6
Argos High School	150090	10	Michigan City High School	152288	2
Arsenal Technical Hs	151645	2	Mississinewa High School	151275	1
Belmont H. S.	150770	1	Morgan Township High School	153560	1
Benjamin Davis High School	151650	3	Mount Vernon Hs, Fortville, In	151080	1
Bethany Christian High School	151312	1	Muncie Central H. S.	152475	1
Bishop Noll Inst	151440	1	New Palestine High School	152560	1
Bremen High School	150290	12	New Prairie High School	152520	3
Broad Ripple H.S.	151655	1	Noblesville High School	152615	1
Brown County Hs	152500	1	North Judson-San Pierre H. S.	152625	14
Brownsburg Hs	150335	2	North Miami High School	150803	1
Caston High School	151210	2	North Newton Hs, Morocco, In	152435	2
Center Grove High School	151390	2	Northridge High School	152295	2
Chesterton High School	150500	3	Norwell High School	152710	1
Chrysler Hs, New Castle	152533	1	Oregon-Davis High School	151430	4
Clark High School, George Roge	153805	1	Out Of State Ged	159998	2
Clarksville High School	150535	1	Out Of State High School	159994	57
Clay High School	153275	5	Penn High School	152347	1
Clinton Prairie High School	151165	1	Peru High School	152805	1
Concord High School	150910	4	Pike High School, Indianapolis	152510	6
Crossing Educational Center	151209	1	Pioneer High School	153070	1
Culver Academies	150695	1	Plymouth High School	152885	66
Culver Community High School	150693	19	Portage High School	150865	2
Danville High School	150740	1	Rich East H.S.	143375	1
Eastern Hs - Greentown	151385	1	Richmond High School	152965	1
Elgin High School	141770	1	Riley, James W. High School	153255	4
Elkhart Central High School	150915	7	River Forest H.S.	151543	1
Foreign High School	159995	23	Rochester High School	153020	8
Foundations Christian School	152886	3	Rockville High School	153035	1
Franklin H.S.	151175	2	Roosevelt High School	151255	1
Frankton High School	151180	1	Rossville High School	153065	1
Frontier High School	150315	1	Senn High School	141055	1
Goshen High School	151315	3	Shortridge Magnet High School	151732	2
Greenwood High School	151395	1	South Bend Washington Hs	153280	9
Hauser High School	151565	1	South Central High School	153530	5
Hobart High School	151545	3	South Dearborn High School	150120	1
Horace Mann High School	151245	1	South Side Hs, Fort Wayne	151110	1
Huntingon North H.S.	151605	1	Southport High School	151752	1
In State Ged	159999	30	St Josephs Hs, South Bend	153265	1
In State Home School	159993	8	Thea Bowman Leadership Acad	151241	1
Indian Creek High School	153485	1	Tippecanoe Valley High School	152255	3
Jefferson Hs, Lafayette	151910	1	Triton High School	150270	4
Jimtown High School	150905	1	Union City Community Hs	153520	1
John Adams High School	153260	2	Valparaiso High School	153565	1
John Glenn High School	153655	16	Warsaw Community High School	153690	4
Kankakee Valley High School	153780	3	Washington Township Hs	153570	1
Knox High School	151870	35	Wawasee High School	153393	1
Kokomo Hs, Kokomo, In	151875	1	West Noble Hs Ligonier In	152075	3
Lake Central High School	153112	3	West Side High School, Gary	151268	2
Laporte High School	151990	7	Western Boone High School	152032	1
Laville High School	151970	10	Westfield Washington Hs	153735	2
Lawrence Central High School	151710	1	Westview High School, Topeka	153480	1
Lighthouse College Prep Acad	151263	1	Westville H.S.	153775	5
Logansport High School	152095	1	Wheeler High School	153790	1
Marian High School	152343	2	Whiteland H.S.	153795	2
Marion H. S. Marion, In	152200	2	Winamac Community High School	153842	3
Mccutcheon High School	151936	1	<b>Total:</b>		<b>504</b>

## Top High Schools

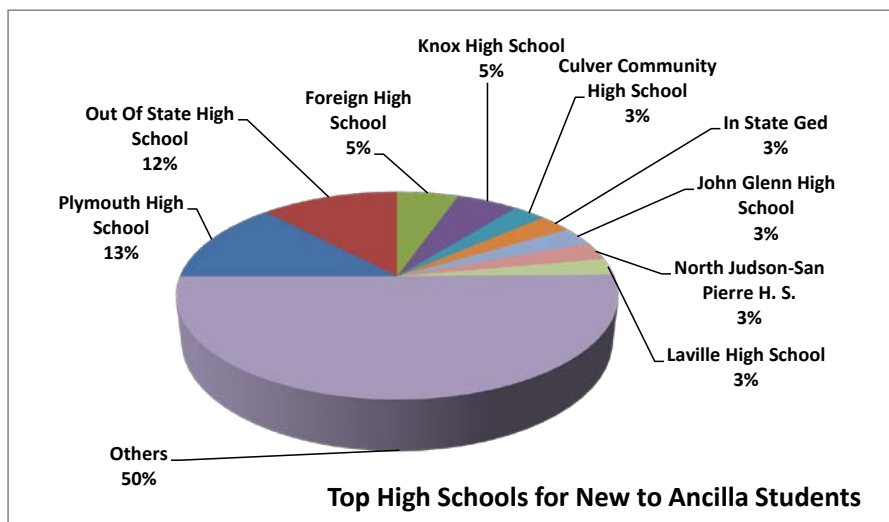


**Demographic Data**

**High Schools - New to Ancilla Students\***

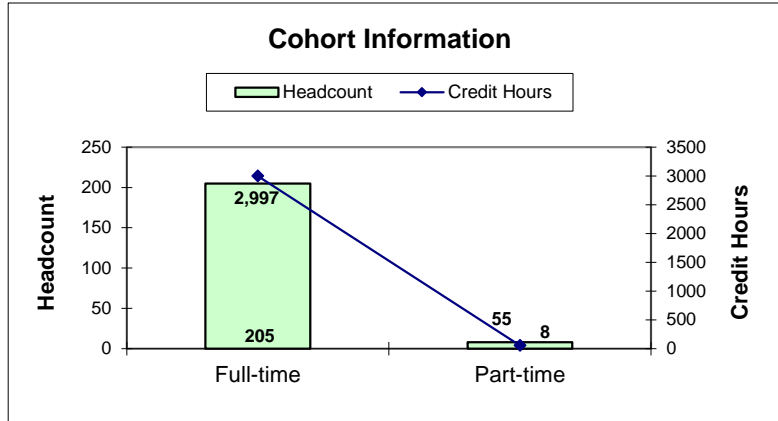
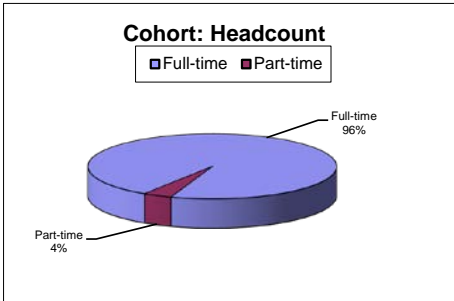
School Name	Count	School Name	Count
Anderson Preparatory Academy	1	Mccutcheon High School	1
Argos High School	4	Memorial, Elkhart High School	4
Arsenal Technical Hs	2	Michigan City High School	1
Benjamin Davis High School	2	Mississinewa High School	1
Bethany Christian High School	1	Morgan Township High School	1
Bishop Noll Inst	1	Mount Vernon Hs, Fortville, In	1
Bremen High School	7	New Palestine High School	1
Broad Ripple H.S.	1	New Prairie High School	3
Brown County Hs	1	Noblesville High School	1
Brownsburg Hs	2	North Judson-San Pierre H. S.	9
Caston High School	1	North Miami High School	1
Center Grove High School	2	North Newton Hs, Morocco, In	2
Chesterton High School	2	Northridge High School	2
Clarksville High School	1	Norwell High School	1
Clay High School	5	Oregon-Davis High School	1
Concord High School	3	Out Of State Ged	1
Crossing Educational Center	1	Out Of State High School	38
Culver Community High School	9	Penn High School	1
Elgin High School	1	Peru High School	1
Elkhart Central High School	7	Pike High School, Indianapolis	5
Foreign High School	17	Plymouth High School	41
Franklin H.S.	1	Portage High School	2
Goshen High School	3	Richmond High School	1
Greenwood High School	1	Riley, James W. High School	3
Hauser High School	1	River Forest H.S.	1
Hobart High School	1	Rochester High School	4
Horace Mann High School	1	Rossville High School	1
In State Ged	9	Shortridge Magnet High School	2
In State Home School	6	South Bend Washington HS	7
Indian Creek High School	1	South Central High School	4
Jefferson HS, Lafayette	1	South Dearborn High School	1
Jimtown High School	1	South Side HS, Fort Wayne	1
John Adams High School	2	Southport High School	1
John Glenn High School	9	St Josephs Hs, South Bend	1
Kankakee Valley High School	3	Thea Bowman Leadership Acad	1
Knox High School	17	Tippecanoe Valley High School	2
Kokomo HS, Kokomo, In	1	Union City Community Hs	1
Lake Central High School	3	Valparaiso High School	1
Laporte High School	6	Warsaw Community High School	2
Laville High School	8	West Side High School, Gary	2
Lawrence Central High School	1	Western Boone High School	1
Lighthouse College Prep Acad	1	Westview High School, Topeka	1
Logansport High School	1	Westville H.S.	3
Marian High School	2	Whiteland H.S.	2
Marion H.S., Marion, In	2	Winamac Community High School	1
<b>Total Students New to Ancilla*</b>	<b>316</b>		

\*includes: New - transfers, WBIY, guests, early birds, dual credit, or first time college students.



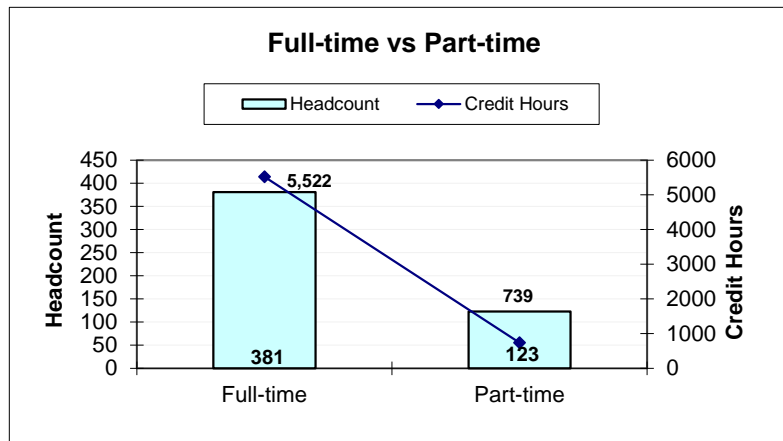
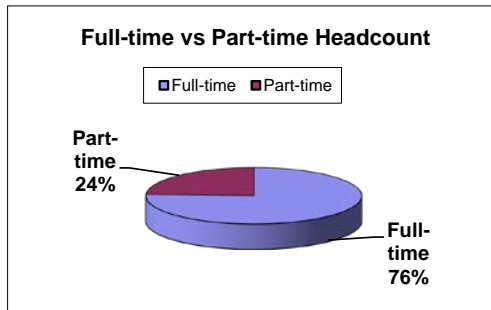
### Cohort Information (First Time - Students)

Cohort Information		
	Headcount	Credit Hours
Full-time	205	2997
Part-time	8	55
<b>Total</b>	<b>213</b>	<b>3052</b>



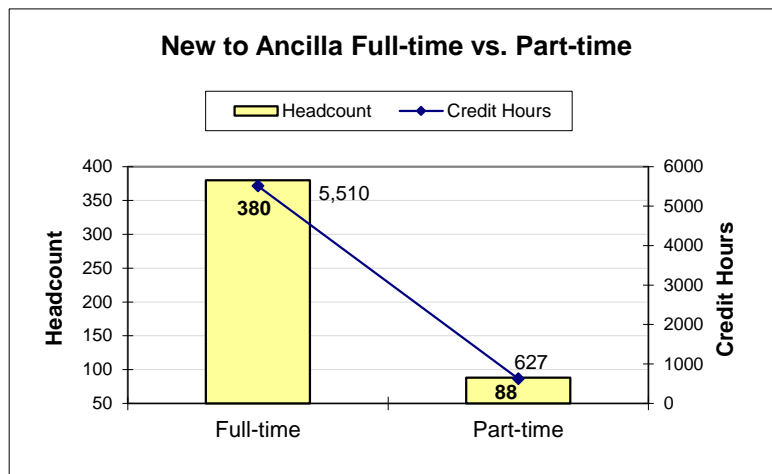
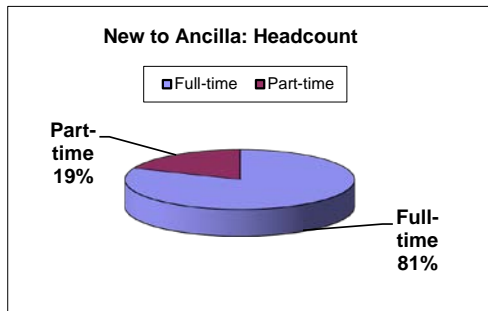
### ALL Students - Full-time/Part-time Information

Full-time/Part-time Information		
	Headcount	Credit Hours
Full-time	381	5522
Part-time	123	739
<b>Total</b>	<b>504</b>	<b>6261</b>



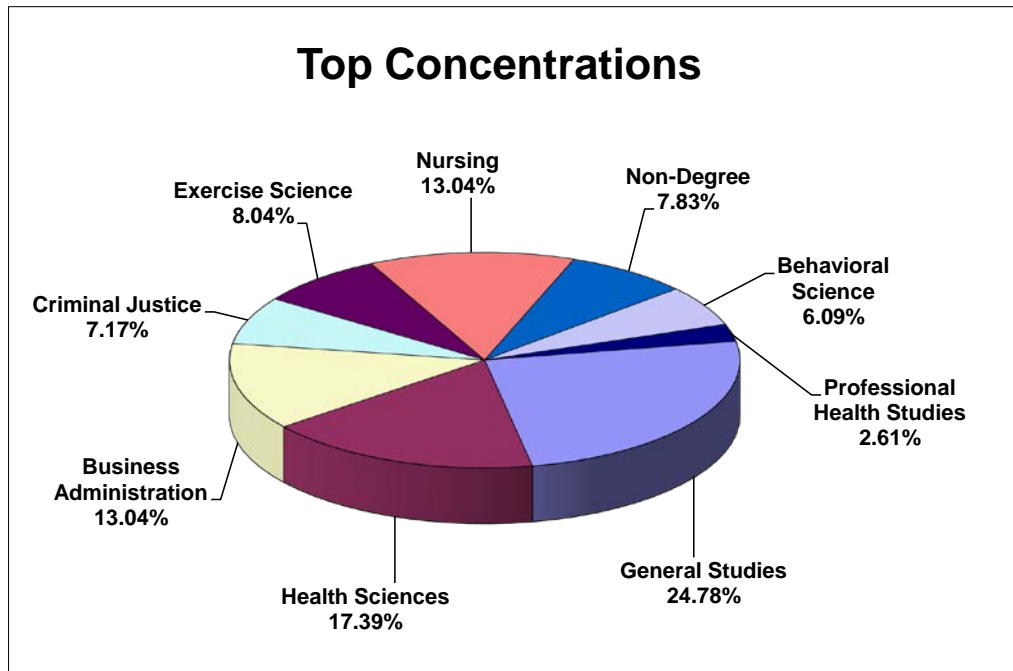
### New to Ancilla Full-time vs. Part-time (ALL New Degree Seeking Students incl: Transfers)

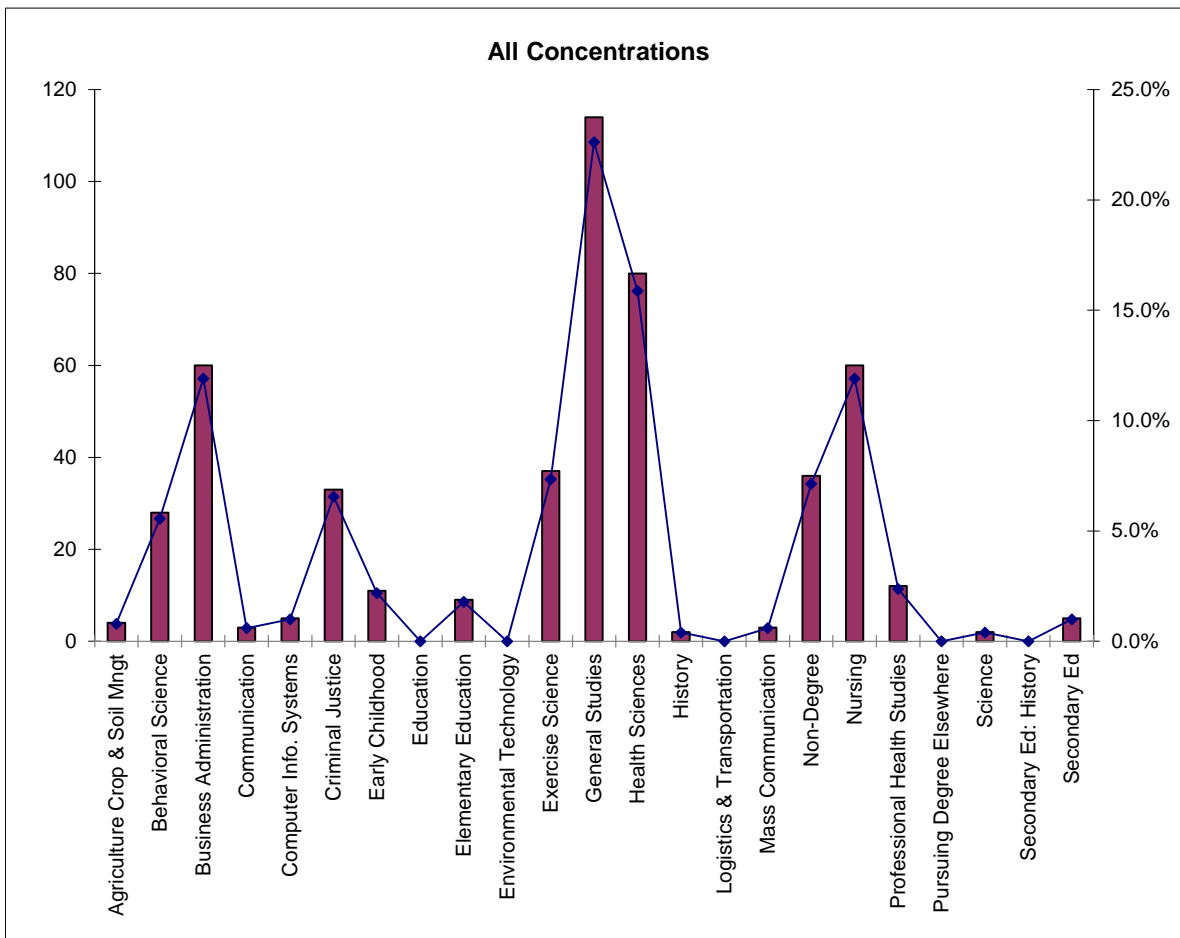
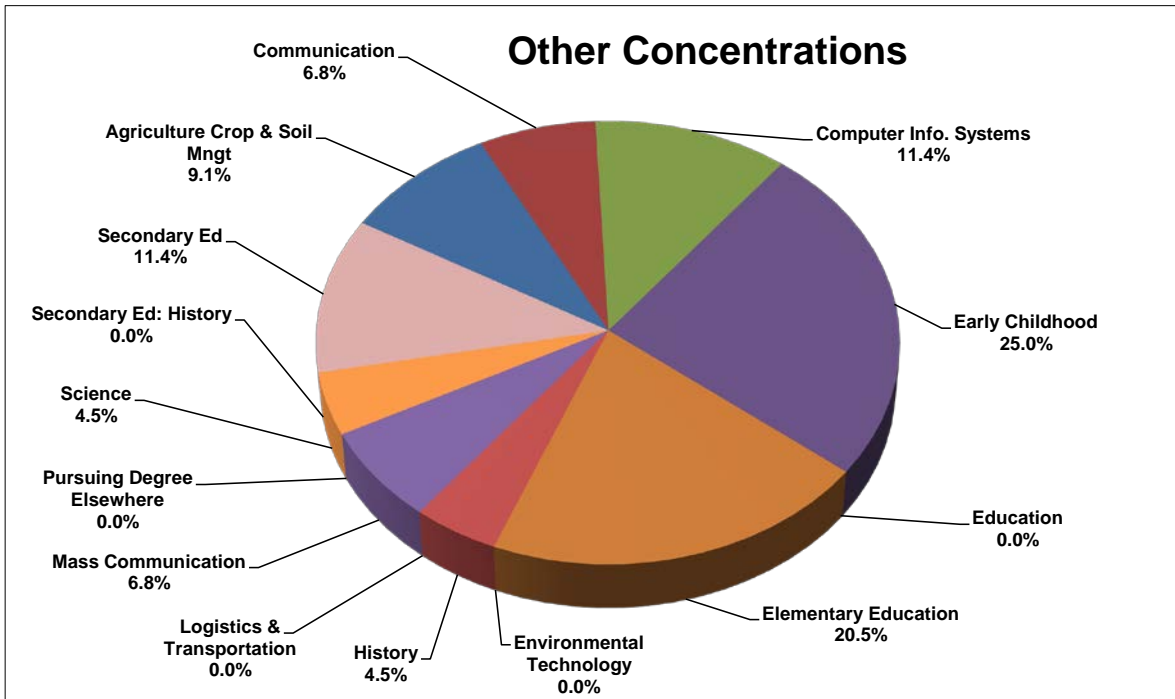
New to Ancilla Full-time vs. Part-time		
	Headcount	Credit Hours
Full-time	380	5510
Part-time	88	627
<b>Total</b>	<b>468</b>	<b>6137</b>



### Concentration Information

Concentration	Totals	Percent	Non-Trad	Trad	Fulltime	Parttime	Freshman	Sophomore	Non-Degree
Agriculture Crop & Soil Mngt	4	0.8%	0	4	2	2	3	1	0
Behavioral Science	28	5.6%	5	23	26	2	24	4	0
Business Administration	60	11.9%	12	48	55	5	53	7	0
Communication	3	0.6%	0	3	3	0	2	1	0
Computer Info. Systems	5	1.0%	1	4	5	0	5	0	0
Criminal Justice	33	6.5%	6	27	28	5	27	6	0
Early Childhood	11	2.2%	3	8	10	1	11	0	0
Education	0	0.0%	0	0	0	0	0	0	0
Elementary Education	9	1.8%	1	8	6	3	7	2	0
Environmental Technology	0	0.0%	0	0	0	0	0	0	0
Exercise Science	37	7.3%	1	36	36	1	32	5	0
General Studies	114	22.6%	20	94	94	20	100	14	0
Health Sciences	80	15.9%	17	63	64	16	72	8	0
History	2	0.4%	0	2	2	0	2	0	0
Logistics & Transportation	0	0.0%	0	0	0	0	0	0	0
Mass Communication	3	0.6%	0	3	3	0	3	0	0
Non-Degree	36	7.1%	0	36	1	35	0	0	36
Nursing	60	11.9%	48	12	30	30	28	32	0
Professional Health Studies	12	2.4%	1	11	9	3	12	0	0
Pursuing Degree Elsewhere	0	0.0%	0	0	0	0	0	0	0
Science	2	0.4%	1	1	2	0	2	0	0
Secondary Ed: History	0	0.0%	0	0	0	0	0	0	0
Secondary Ed	5	1.0%	0	5	5	0	5	0	0
<b>Totals</b>	<b>504</b>	<b>100.0%</b>	<b>116</b>	<b>388</b>	<b>381</b>	<b>123</b>	<b>388</b>	<b>80</b>	<b>36</b>
<b>Credit Hours</b>	<b>6261</b>		<b>1165</b>	<b>5096</b>	<b>5522</b>	<b>739</b>	<b>5234</b>	<b>903</b>	<b>124</b>





### Concentration Information

	New	Re-Entry	Audit	Early Bird	Guest	Transfer	WBIY	Dual Credit	Continuing	Total
<b>Concentrations by Entry Code</b>	<b>1</b>	<b>2</b>	<b>3</b>	<b>4</b>	<b>5</b>	<b>6</b>	<b>7</b>	<b>8</b>	<b>0</b>	<b>Count</b>
Agriculture Crop & Soil Mngt	1	0	0	0	0	2	0	0	1	4
Behavioral Science	10	3	0	0	0	5	0	0	10	28
Business Administration	36	3	0	0	0	8	0	0	13	60
Communication	2	0	0	0	0	0	0	0	1	3
Computer Information Systems	5	0	0	0	0	0	0	0	0	5
Criminal Justice	15	0	0	0	0	1	0	0	17	33
Early Childhood	7	0	0	0	0	3	0	0	1	11
Elementary Education	3	1	0	0	0	0	0	0	5	9
Education	0	0	0	0	0	0	0	0	0	0
Environmental Technology	0	0	0	0	0	0	0	0	0	0
Exercise Science	22	0	0	0	0	8	0	0	7	37
General Studies	51	7	0	0	0	12	0	0	44	114
Health Sciences	44	3	0	0	0	9	0	0	24	80
History	1	0	0	0	0	0	0	0	1	2
Logistics & Inventory Systems	0	0	0	0	0	0	0	0	0	0
Mass Communication	2	0	0	0	0	1	0	0	0	3
Non-Degree	0	0	0	5	0	0	0	31	0	36
Nursing	0	3	0	0	0	21	0	0	36	60
Professional Health Studies	10	1	0	0	0	0	0	0	1	12
Pursuing Degree Elsewhere	0	0	0	0	0	0	0	0	0	0
Science	1	0	0	0	0	0	0	0	1	2
Secondary Ed: History	0	0	0	0	0	0	0	0	0	0
Secondary Ed	3	0	0	0	0	1	0	0	1	5
<b>Totals</b>	<b>213</b>	<b>21</b>	<b>0</b>	<b>5</b>	<b>0</b>	<b>71</b>	<b>0</b>	<b>31</b>	<b>163</b>	<b>504</b>
<b>Hours</b>	<b>2208</b>	<b>299</b>	<b>0</b>	<b>60</b>	<b>7</b>	<b>423</b>	<b>0</b>	<b>30</b>	<b>1795</b>	<b>4822</b>

Concentrations by Gender	Female	Percent	Male	Percent	Totals
Agriculture Crop & Soil Mngt	3	0.60%	1	0.20%	4
Behavioral Science	22	4.37%	6	1.19%	28
Business Administration	18	3.57%	42	8.33%	60
Communication	1	0.20%	2	0.40%	3
Computer Information Systems	0	0.00%	5	0.99%	5
Criminal Justice	13	2.58%	20	3.97%	33
Early Childhood	10	1.98%	1	0.20%	11
Elementary Education	6	1.19%	3	0.60%	9
Education	0	0.00%	0	0.00%	0
Environmental Technology	0	0.00%	0	0.00%	0
Exercise Science	12	2.38%	25	4.96%	37
General Studies	43	8.53%	71	14.09%	114
Health Sciences	69	13.69%	11	2.18%	80
History	1	0.20%	1	0.20%	2
Logistics & Inventory Systems	0	0.00%	0	0.00%	0
Mass Communication	2	0.40%	1	0.20%	3
Non-Degree	14	2.78%	22	4.37%	36
Nursing	54	10.71%	6	1.19%	60
Professional Health Studies	8	1.59%	4	0.79%	12
Pursuing Degree Elsewhere	0	0.00%	0	0.00%	0
Science	1	0.20%	1	0.20%	2
Secondary Ed: History	0	0.00%	0	0.00%	0
Secondary Ed	2	0.40%	3	0.60%	5
<b>Total</b>	<b>279</b>	<b>55.36%</b>	<b>225</b>	<b>44.64%</b>	<b>504</b>

## Concentration Information

Concentrations by Class	Freshman	Sophomore	Unclassified	Total	CIP Code
Agriculture Crop & Soil Mngt	3	1	0	4	01.0000
Behavioral Science	24	4	0	28	30.1701
Business Administration	53	7	0	60	52.0201
Communication	2	1	0	3	09.0101
Computer Info. Systems	5	0	0	5	11.0101
Criminal Justice	27	6	0	33	43.0104
Early Childhood	11	0	0	11	13.1210
Education	0	0	0	0	13.0101
Elementary Education	7	2	0	9	13.1202
Environmental Technology	0	0	0	0	03.0103
Exercise Science	32	5	0	37	31.0505
General Studies	100	14	0	114	24.0102
Health Sciences	72	8	0	80	51.0000
History	2	0	0	2	54.0101
Logistics & Transportation	0	0	0	0	52.0203
Mass Communication	3	0	0	3	09.0102
Non-Degree	0	0	36	36	99.9999
Nursing	28	32	0	60	51.3801
Professional Health Studies	12	0	0	12	51.0000
Pursuing Degree Elsewhere	0	0	0	0	99.9999
Science	2	0	0	2	30.0101
Secondary Ed: History	0	0	0	0	13.1328
Secondary Ed	5	0	0	5	13.1205
<b>Totals</b>	<b>388</b>	<b>80</b>	<b>36</b>	<b>504</b>	



### Traditional - NonTraditional Information

Headcount / Credit Hours					
	Count	%	Total	%	Average
Trad	388	76.98%	5096	81.39%	13.13
NonTrad	116	23.02%	1165	18.61%	10.04
<b>Totals</b>	<b>504</b>	<b>100.00%</b>	<b>6261</b>	<b>100.00%</b>	<b>12.42</b>

Gender / Credit Hours						
	Male	%	Average	Female	%	Average
Trad	2634	42.07%	13.10	2462	39.32%	13.17
NonTrad	245	3.91%	10.21	920	14.69%	10.00
<b>Totals</b>	<b>2879</b>	<b>45.98%</b>		<b>3382</b>	<b>54.02%</b>	
<b>Average</b>			<b>12.80</b>			<b>12.12</b>

Gender / Headcount				
	Male	%	Female	%
Trad	201	39.88%	187	37.10%
NonTrad	24	4.76%	92	18.25%
<b>Totals</b>	<b>225</b>	<b>44.64%</b>	<b>279</b>	<b>55.36%</b>

Full-time Headcount / Credit Hours					
	Count	%	Cr Hrs	%	Average
Trad	329	65.28%	4828	77.11%	14.67
NonTrad	52	10.32%	694	11.08%	13.35
<b>Totals</b>	<b>381</b>	<b>75.60%</b>	<b>5522</b>	<b>88.20%</b>	<b>14.49</b>

Part-time Headcount / Credit Hours					
	Count	%	Cr Hrs	%	Average
Trad	59	11.71%	268	4.28%	4.54
NonTrad	64	12.70%	471	600.00%	7.36
<b>Totals</b>	<b>123</b>	<b>24.40%</b>	<b>739</b>	<b>11.80%</b>	<b>6.01</b>

## Athlete Information

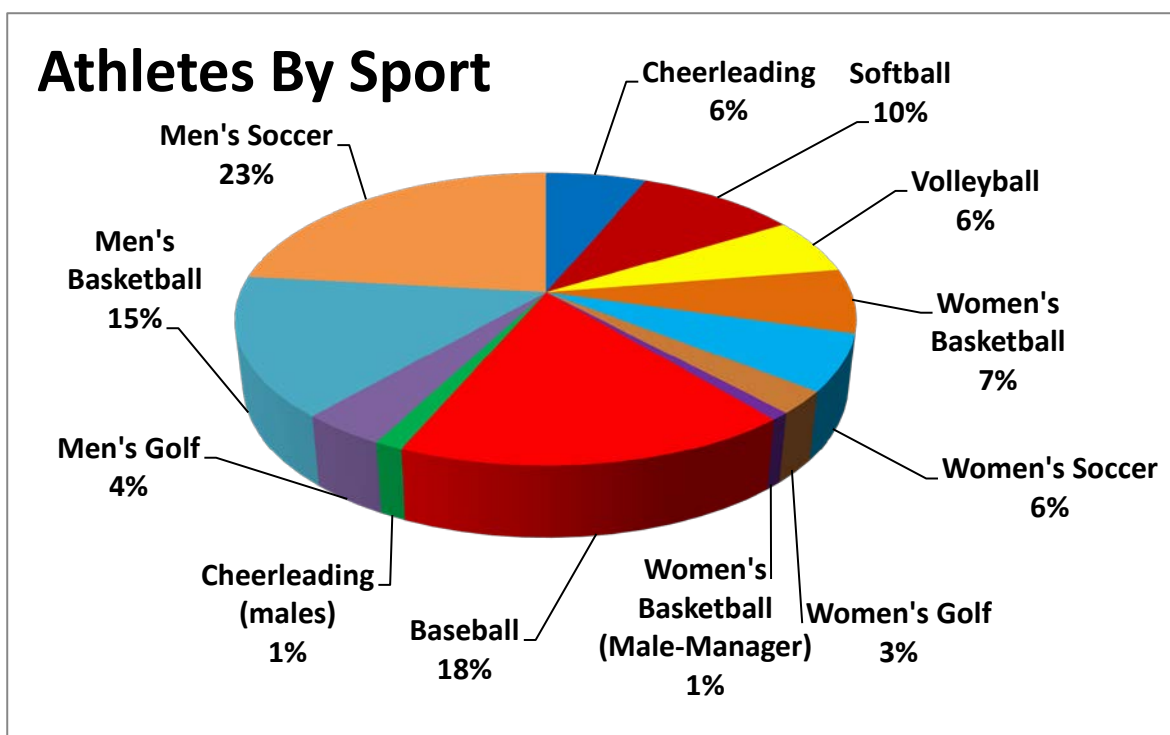
Headcount/Credit Hours			
	Male	Female	Total
Headcount	149	92	241
Credit Hours	2157	1393	3550

Headcount by Class/Gender			
	Male	Female	Total
Freshman	144	87	231
Sophomore	5	5	10
Total	149	92	241

Credit Hours Class/Gender			
	Male	Female	Total
Freshman	2079	1319	3398
Sophomore	78	74	152
Total	2157	1393	3550

Percent of Total Student Population		
	Headcount	Cr. Hrs
Total Population	503	6261
% Athletes	48%	57%

*\*Some athletes may participate in multiple sports*



## Nursing Information

Credit Hours / Headcount			
	Male	Female	Total
Headcount	6	54	60
Credit Hours	73	558	631

Headcount by Class/Gender			
	Male	Female	Total
Freshman	2	26	28
Sophomore	4	28	32
Total	6	54	60

Credit Hours by Class/Gender			
	Male	Female	Total
Freshman	27	268	295
Sophomore	46	290	336
Total	73	558	631

Percent of Student Population		
	Count	Cr. Hrs
Total Population	504	6261
% Nursing	11.90%	10.08%

Headcount by Class and Entry Code				
Original Student Entry Code	Freshman	Sophomore	Totals	
			Count	Percent
New	0	0	0	0.00%
Re-entry	0	3	3	5.00%
Guest	0	0	0	0.00%
Transfer	20	1	21	35.00%
Continuing	8	28	36	60.00%
Total	28	32	60	100%
Percent	46.67%	53.33%		

## 1st Generation Information

Credit Hours / Headcount			
1st Generation New to Ancilla			
	Male	Female	Total
Headcount	48	54	102
Credit Hours	670	706	1376

2015 Fall All New to Ancilla Students		
	Headcount	Cr. Hrs
Freshman Class	284	3912
% 1st Generation Students	35.92%	35.17%

2015 Fall Student Population		
	Headcount	Cr. Hrs
Total Population	504	6261
% 1st Generation Students	20.24%	21.98%

## Additional Information

Credit Hours by Class/Gender			
	Male	Female	Total
Freshman	2535	2699	5234
Sophomore	266	637	903
Non-Degree/Unclassified	78	46	124
<b>Total</b>	<b>2879</b>	<b>3382</b>	<b>6261</b>

Headcount by Class/Gender			
	Male	Female	Total
Freshman	181	207	388
Sophomore	22	58	80
Non-Degree/Unclassified	22	14	36
<b>Total</b>	<b>225</b>	<b>279</b>	<b>504</b>

New Non-Degree Audit Students			
	Male	Female	Total
Credit Hours**	0	0	0
Headcount	0	0	0

New Early Bird Students			
	Male	Female	Total
Credit Hours	6	3	9
Headcount	1	1	2

New Guest Students			
	Male	Female	Total
Credit Hours	0	0	0
Headcount	0	0	0

New Dual Credit Students			
	Male	Female	Total
Credit Hours	57	33	90
Headcount	19	11	30

\*\*Credit Hours of Audit Courses are not included in  
official counts