

Enrollment Report

Office of the Registrar

Fall 2017

20181

December 15, 2017

Index

Additional Information	30	Faculty FTE	8
Age	14	First Generation - Information	29
Athlete - Information	26-27	Full-time vs Part-time	25
Average Age	14	Gender	9
Average Student Load	8	High School - All Students	15-16
City	11	High School - New to Ancilla	18
Class	10	Marital Status	9
Cohort - First Time - Full-time	19	New to Ancilla - FT vs PT	19
Cohort - First Time - Part-time	19	Non Degree Students	30
Cohort Info	19	Number of Sections Offered	8
Concentration Information	20	Nursing - Information	28
Concentrations - All Chart	21-22	Online Courses - Offered	8
Concentrations - CIP Codes	24	Religion	10
Concentrations - Other - Chart	21	Retention - 1st Term Freshman	6
Concentrations - Top - Chart	20	Retention - All Freshman	2
Concentrations by Class	10 & 24	Retention - All Students	2
Concentrations by Entry Code	22	Retention - Athletes	7
Concentrations by Full-time/PT	20	Retention - Charts	2-5, 7
Concentrations by Gender	23	Retention - Sophomores	6
Concentrations by Trad/Non Trad	20	Student FTE	8
Country	13	Student/Faculty Ratio	8
County	12	Top High School Chart	18
Credit Hours by Class	30	Trad - Non Trad Chart	14
Credit Hours by College	1	Web Assisted Courses - Offered	8
Credit Hours by Gender	9		
Entry Code	1		
Ethnicity	9		

Notes:

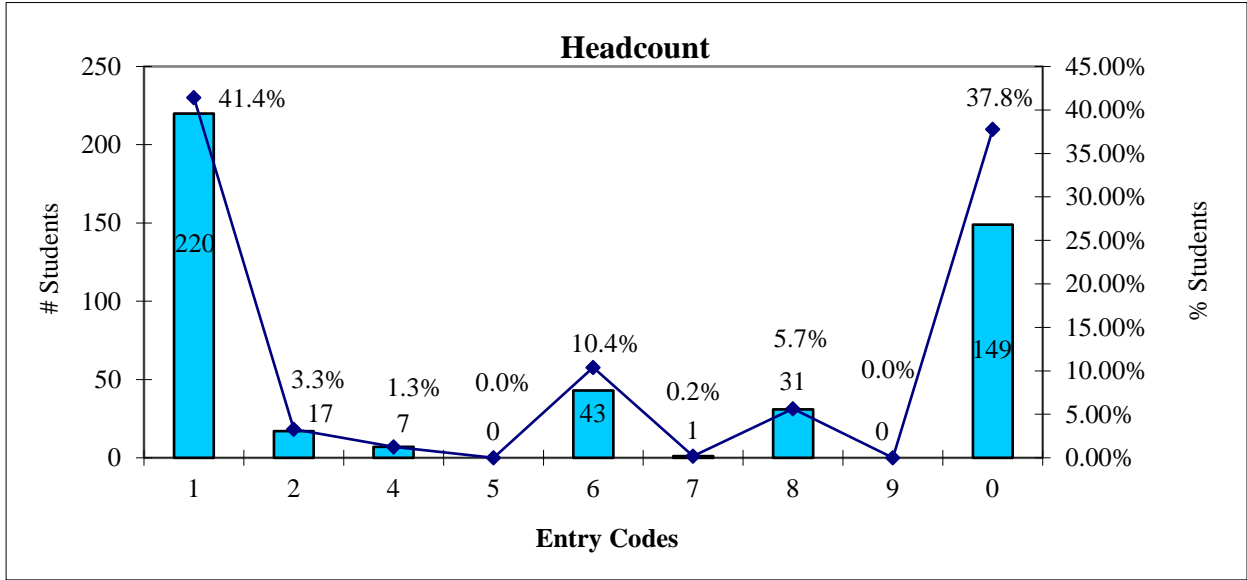
Page 8 - Student Faculty Ratio: New formula used to determine Student/ Faculty Ratio

$FTE\ Students \div FTE\ Faculty = Student\ Faculty\ Ratio$

(old formula: $Total\ \# \ Students \div FTE\ Faculty = Student/Faculty\ Ratio$)

Entry Codes

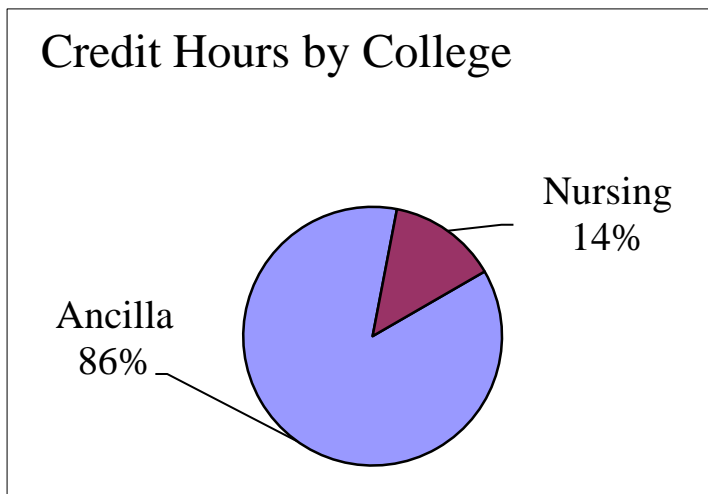
Headcount	New	Re-entry	Early Bird	Guest	Transfer	WBIY	Dual Credit	Non-Degree	Continuing	Total
	1	2	4	5	6	7	8	9	0	
Ancilla	220	17	7	0	43	1	31	0	149	468
Nursing	7	1	0	0	14	0	0	0	58	80
Total	227	18	7	0	57	1	31	0	207	548
Total Percent	41.42%	3.28%	1.28%	0.00%	10.40%	0.18%	5.66%	0.00%	37.77%	100%



Credit Hours by College	
	Credit Hours
Ancilla	6111
Nursing	966
Total	7077

Headcount	New	Re-entry	Continuing	Total
Degree Seeking	227	17	207	451
Transfer	57	1	0	58
Guest	0	0	0	0
Audit	0	0	0	0
WBIY	1	0	0	1
Early Bird	2	0	5	7
Dual Credit	28	0	3	31
315	18	215	548	

***Audit credits are not counted in the overall credit total.*



Retention Report

Spring to Fall - All

Fall	Previous Spring Headcount (less Grads)	Headcount Enrolled for Fall (incl. Grad Appl)	%
2017	369	205	55.56%
2016	361	207	57.34%
2015	290	165	56.90%
2014	305	159	52.13%
2013	331	189	57.10%
2012	387	226	58.40%
2011	443	272	61.40%
2010	463	280	60.48%
2009	433	268	61.89%
2008	390	225	57.69%
2007	385	251	65.19%

Fall to Fall - All

Fall 2017	Previous Fall Headcount (less Grads)	Headcount Enrolled for Fall (incl. Grad Appl)	%
2016-2017	480	198	41.25%
2015-2016	424	188	44.34%
2014-2015	339	149	43.95%
2013-2014	354	147	41.53%
2012-2013	374	170	45.45%
2011-2012	442	204	46.15%
2010-2011	478	232	48.54%
2009-2010	476	238	50.00%
2008-2009	418	215	51.44%
2007-2008	406	200	49.26%
2006-2007	407	222	54.55%

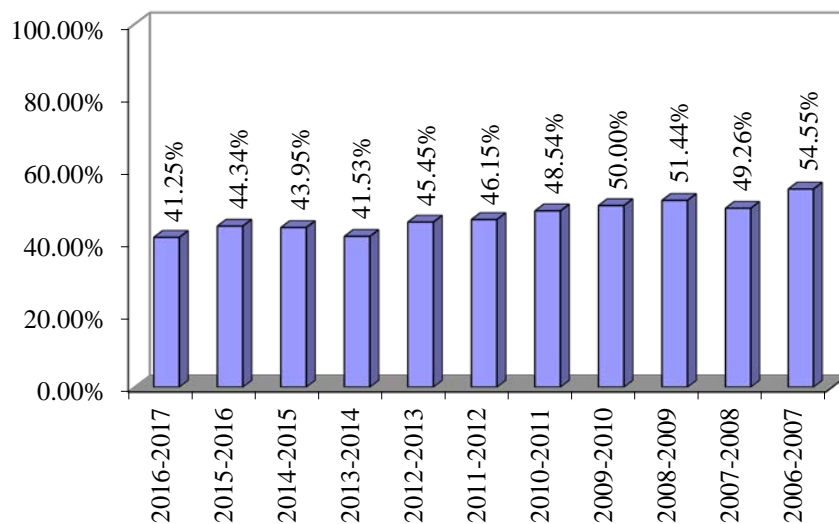
Spring to Fall - All Freshman

Fall	Previous Spring Freshman Headcount	Headcount Enrolled for Fall	%
2017	245	138	56.33%
2016	242	139	57.44%
2015	199	123	61.81%
2014	213	117	54.93%
2013	190	115	60.53%
2012	228	133	58.33%
2011	284	166	58.45%
2010	310	179	57.74%
2009	294	180	61.22%
2008	244	143	58.61%
2007	223	142	63.68%

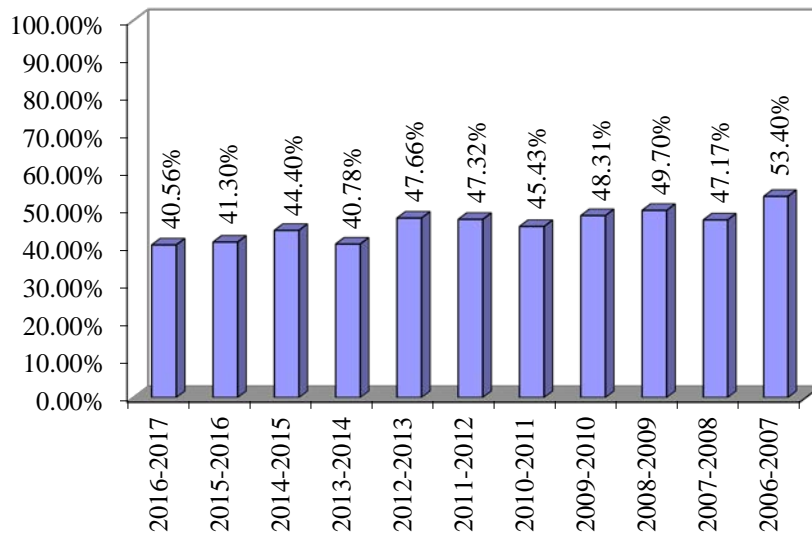
Fall to Fall - All Freshman

Fall 2017	Previous Fall Freshman Headcount	Headcount Enrolled for Fall	%
2016-2017	392	159	40.56%
2015-2016	339	140	41.30%
2014-2015	268	119	44.40%
2013-2014	282	115	40.78%
2012-2013	256	122	47.66%
2011-2012	317	150	47.32%
2010-2011	394	179	45.43%
2009-2010	385	186	48.31%
2008-2009	330	164	49.70%
2007-2008	318	150	47.17%
2006-2007	294	157	53.40%

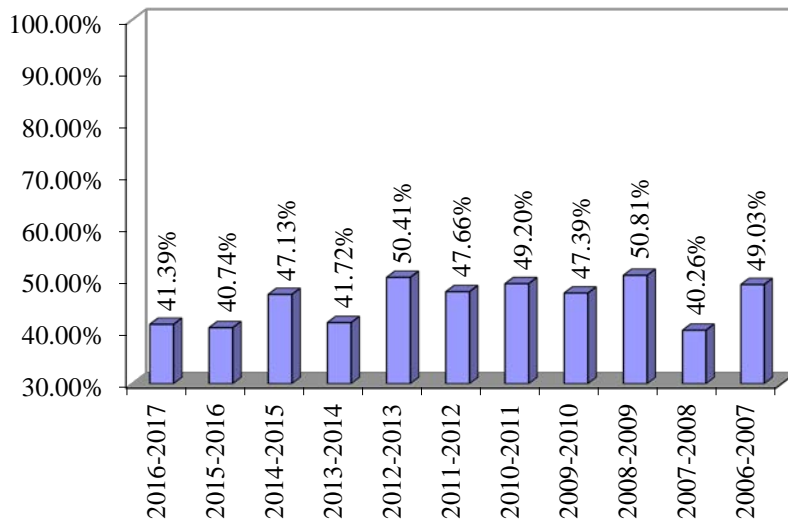
Retention - Fall to Fall - All Students



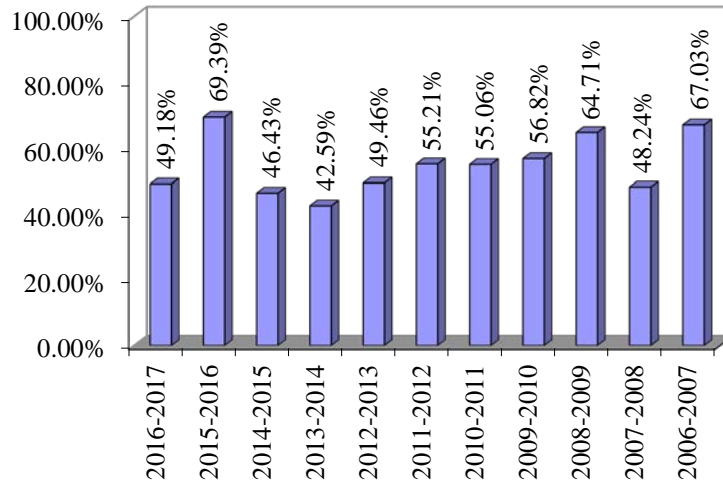
Retention - Fall to Fall - All Freshman



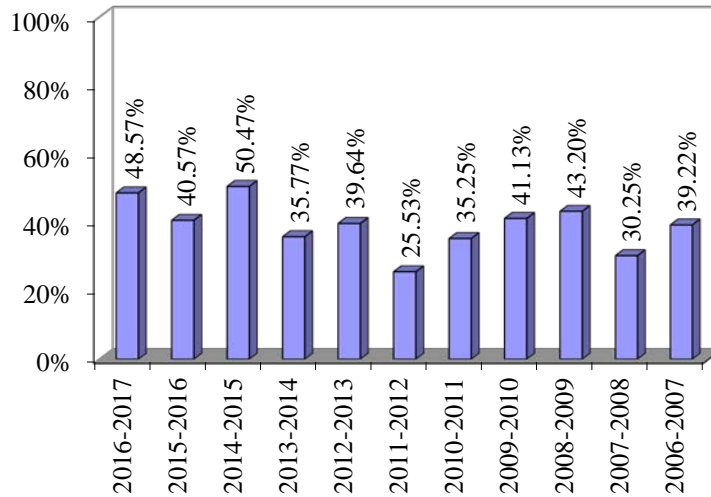
Retention - Fall to Fall - 1st Term Freshman



Retention - Fall to Fall - Sophomores



Retention - Fall to Fall - Athletes



Retention Report

Spring to Fall - 1st Term Freshman

Fall	Previous Spring 1st Term Freshman Headcount	Headcount Enrolled for Fall	%
2017	26	12	46.15%
2016	39	24	61.54%
2015	25	13	52.00%
2014	24	8	33.33%
2013	17	12	70.59%
2012	20	8	40.00%
2011	20	12	60.00%
2010	56	35	62.50%
2009	69	43	62.32%
2008	15	10	66.67%
2007	11	7	63.64%

Fall to Fall - 1st Term Freshman

Fall 2017	Previous Fall 1st Term Freshman Headcount	Headcount Enrolled for Fall	%
2016-2017	302	125	41.39%
2015-2016	270	110	40.74%
2014-2015	174	82	47.13%
2013-2014	151	63	41.72%
2012-2013	121	61	50.41%
2011-2012	128	61	47.66%
2010-2011	187	92	49.20%
2009-2010	211	100	47.39%
2008-2009	185	94	50.81%
2007-2008	154	62	40.26%
2006-2007	155	76	49.03%

Spring to Fall - Sophomores

Fall	Previous Spring Sophomore Headcount (less Grads)	Headcount Enrolled for Fall (incl. Grad Appl)	%
2017	100	58	58.00%
2016	89	55	61.80%
2015	69	36	52.17%
2014	65	32	49.23%
2013	124	71	57.26%
2012	140	89	63.57%
2011	132	89	67.42%
2010	149	100	67.11%
2009	122	81	66.39%
2008	145	74	51.03%
2007	137	102	74.45%

Fall to Fall - Sophomores

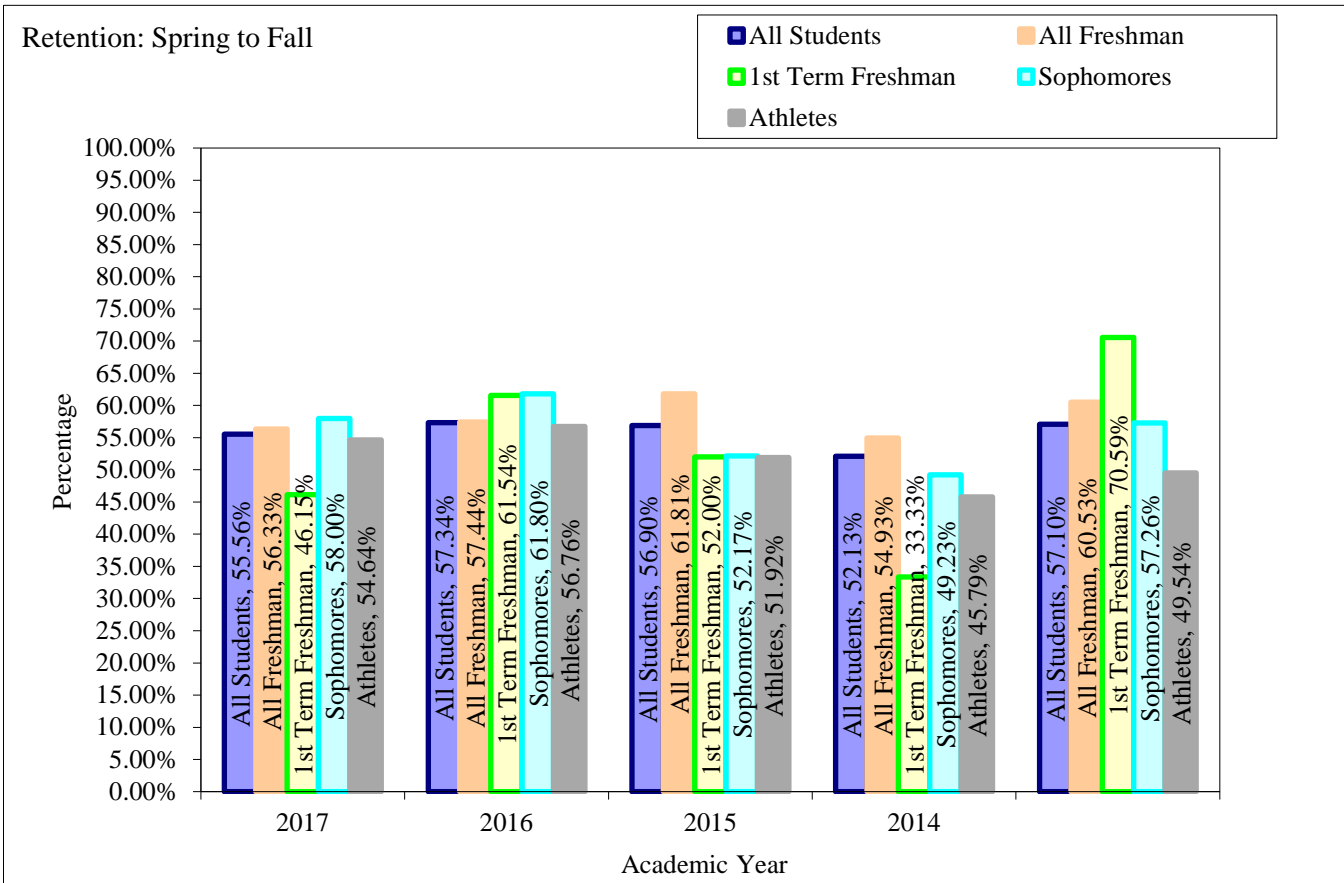
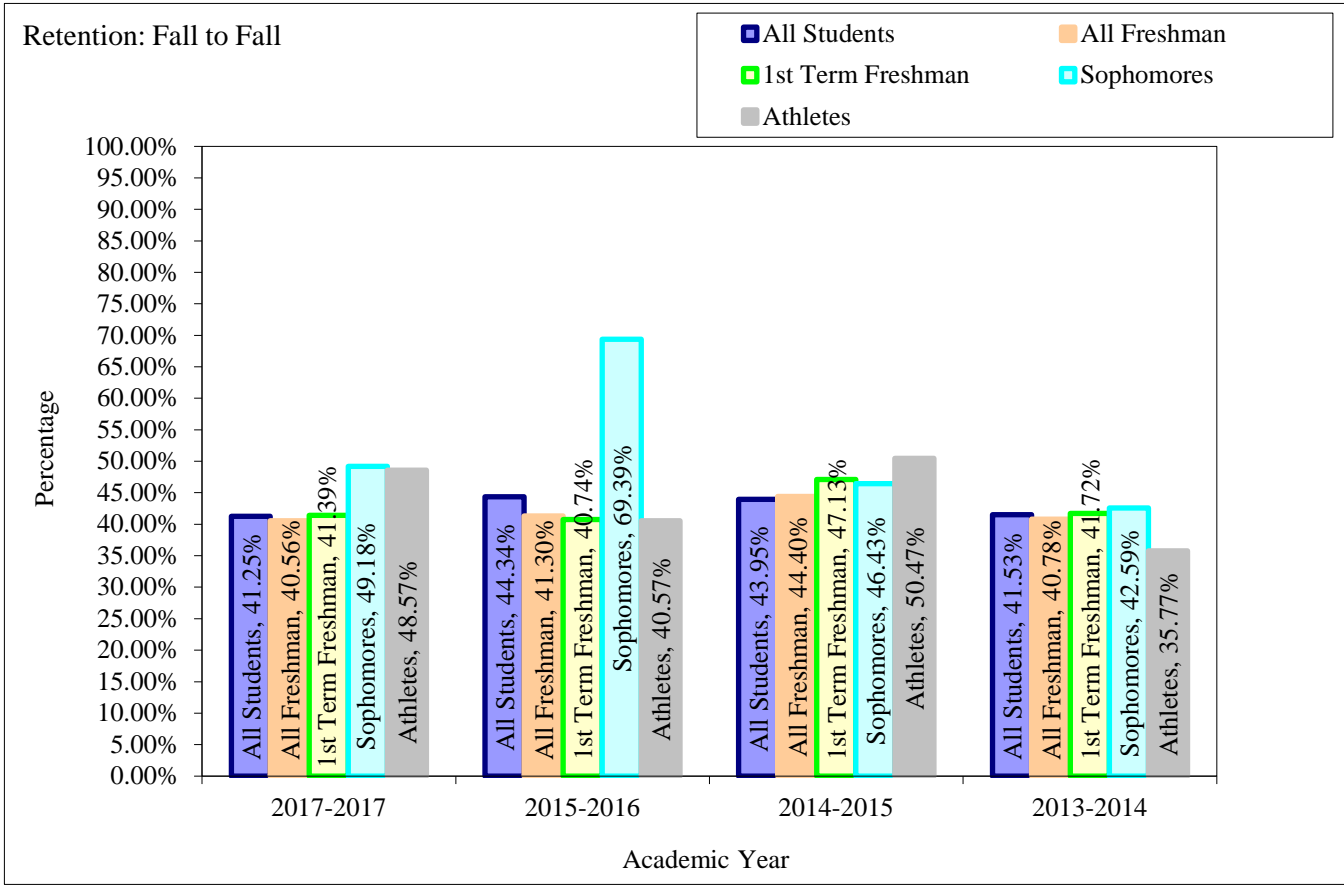
Fall 2017	Previous Fall Sophomore Headcount (less Grads)	Headcount Enrolled for Fall (incl. Grad Appl)	%
2017-2017	61	30	49.18%
2015-2016	49	34	69.39%
2014-2015	56	26	46.43%
2013-2014	54	23	42.59%
2012-2013	93	46	49.46%
2011-2012	96	53	55.21%
2010-2011	89	49	55.06%
2009-2010	88	50	56.82%
2008-2009	68	44	64.71%
2007-2008	85	41	48.24%
2006-2007	91	61	67.03%

Spring to Fall - Athletes

Fall	Previous Spring Athlete Headcount (less Grads)	Headcount Enrolled for Fall (incl. Grad Appl)	%
2017	183	100	54.64%
2016	148	84	56.76%
2015	104	54	51.92%
2014	107	49	45.79%
2013	109	54	49.54%
2012	92	37	40.22%
2011	115	51	44.35%
2010	107	55	51.40%
2009	114	57	50.00%
2008	132	47	35.61%
2007	78	41	52.56%

Fall to Fall - Athletes

Fall 2017	Previous Fall Athlete Headcount (less Grads)	Headcount Enrolled for Fall (incl. Grad Appl)	%
2017-2016	210	102	48.57%
2015-2016	212	86	40.57%
2014-2015	107	54	50.47%
2013-2014	137	49	35.77%
2012-2013	111	44	39.64%
2011-2012	141	36	25.53%
2010-2011	139	49	35.25%
2009-2010	124	51	41.13%
2008-2009	125	54	43.20%
2007-2008	162	49	30.25%
2006-2007	102	40	39.22%



Fall 2017 Demographics

Faculty FTE	
Fall 2012 - 20131	27.93
Fall 2013 - 20141	27.07
Fall 2014 - 20151	30.67
Fall 2015 - 20161	37.27
Fall 2016 - 20171	37.27
Fall 2017 - 20181	25.53

Num. of Sections Offered	
Fall 2012 - 20131	129
Fall 2013 - 20141	134
Fall 2014 - 20151	134
Fall 2015 - 20161	146
Fall 2016 - 20171	189
Fall 2017 - 20181	162

Student FTE (at 15 credits)	
Fall 2012 - 20131	326.73
Fall 2013 - 20141	326.73
Fall 2014 - 20151	321.47
Fall 2015 - 20161	417.40
Fall 2016 - 20171	505.53
Fall 2017 - 20181	471.80

Num. of Web Assisted Courses	
Fall 2012 - 20131	55
Fall 2013 - 20141	66
Fall 2014 - 20151	81
Fall 2015 - 20161	102
Fall 2016 - 20171	114
Fall 2017 - 20181	107

Student/Faculty Ratio	
Fall 2012-20131*	10.20 : 1
Fall 2013 - 20141	11.70 : 1
Fall 2014 - 20151	11.88 : 1
Fall 2015 - 20161	13.61 : 1
Fall 2016 - 20171	13.57 : 1
Fall 2017 - 20181	18.48 : 1

Num. of Online Courses	
Fall 2012 - 20131	14
Fall 2013 - 20141	17
Fall 2014 - 20151	15
Fall 2015 - 20161	24
Fall 2016 - 20171	36
Fall 2017 - 20181	33

*See Note - Index Page

Average Student Load	
Fall 2012 - 20131	11.11
Fall 2013 - 20141	11.56
Fall 2014 - 20151	12.06
Fall 2015 - 20161	12.42
Fall 2016 - 20171	13.03
Fall 2017 - 20181	12.16

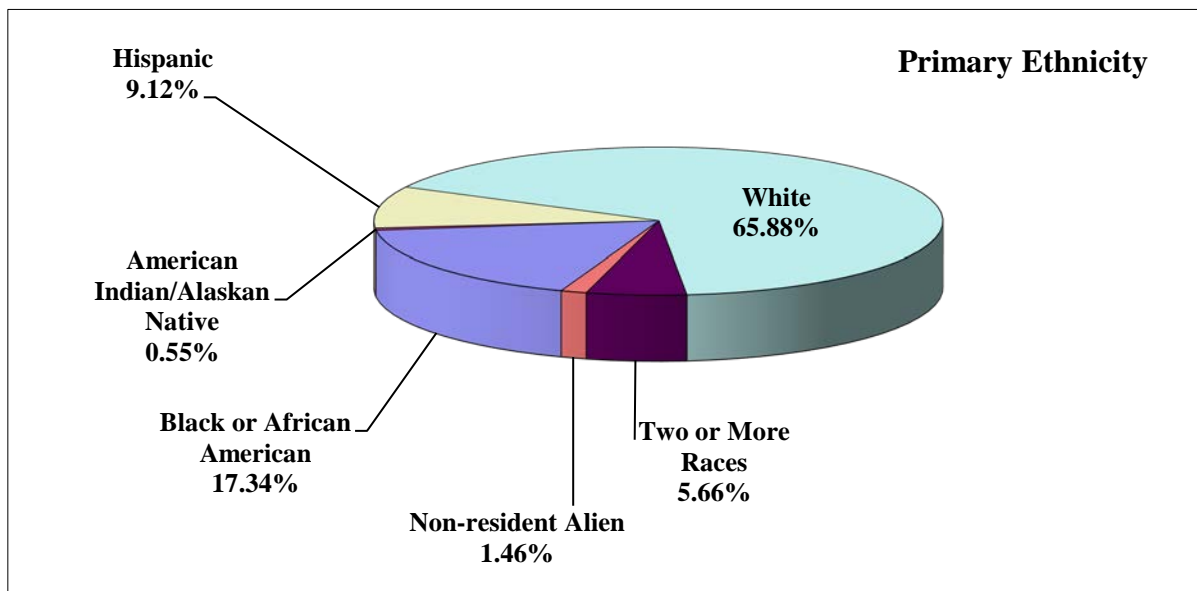
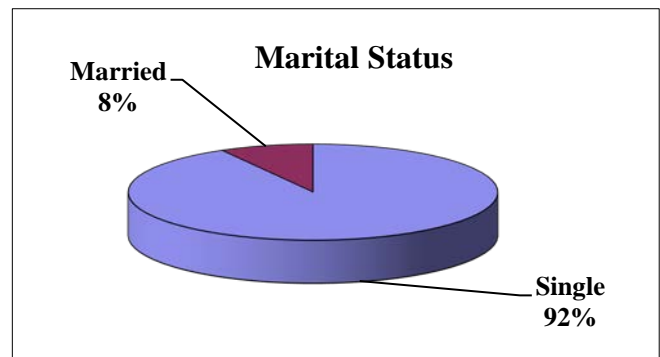
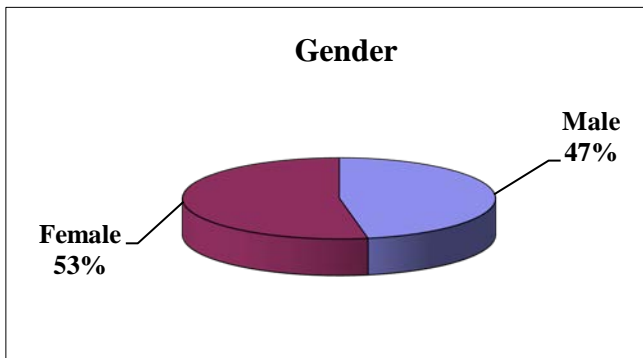
Num. of Hybrid Courses	
Fall 2012 - 20131	NA
Fall 2013 - 20141	NA
Fall 2014 - 20151	NA
Fall 2015 - 20161	NA
Fall 2016 - 20171	13
Fall 2017 - 20181	15

Demographic Data

Gender	Count	Credits	Percent
Male	258	3397	47.08%
Female	290	3680	52.92%
	548	7077	100%

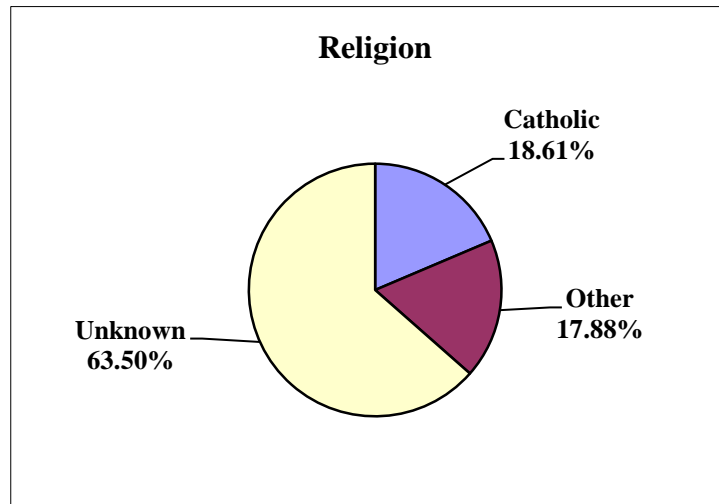
Marital Status	Count	Credits	Percent
Single	503	6575	91.79%
Married	45	502	8.21%
	548	7077	100%

Primary Ethnicity	Count	Percent
Black or African American	95	17.34%
American Indian/Alaskan Native	3	0.55%
Hispanic	50	9.12%
White	361	65.88%
Two or More Races	31	5.66%
Non-resident Alien	8	1.46%
	548	100.00%

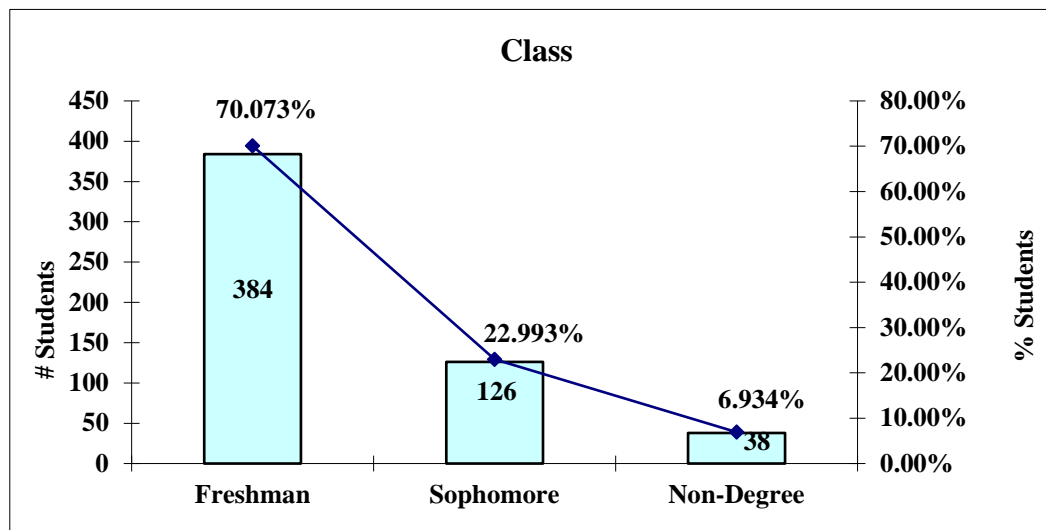


Demographic Data

Religion	
	Count
Baptist	4
Brethren	0
Catholic	102
Christian	17
Lutheran	4
Methodist	2
Mormon	1
Non-Catholic	16
Non-Denominational	2
Other	51
Pentecostal	1
Unknown Religion	348
Wesleyan	0
Total	548



Religion		
Catholic	102	18.61%
Other	98	17.88%
Unknown	348	63.50%
Total	548	100%

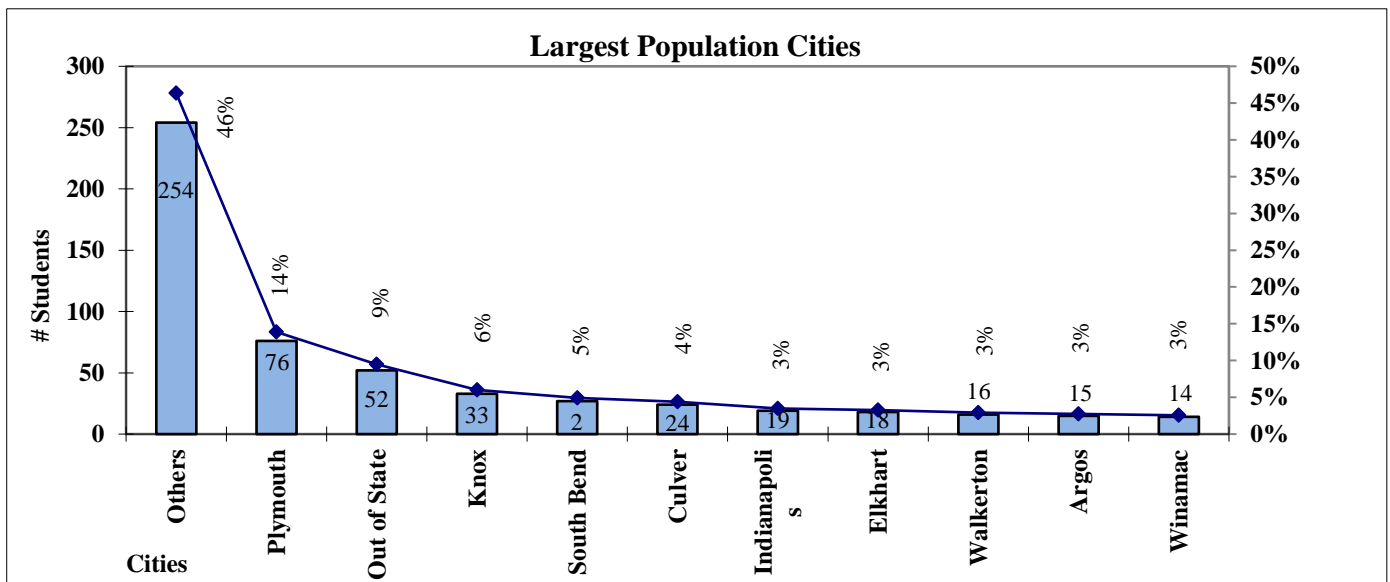


Entry Code	Class			Total	Percent
	Freshman	Sophomore	Non-Degree		
New	226	1	0	227	41.42%
Re-entry	8	10	0	18	3.28%
Early Bird	0	0	7	7	1.28%
Guest	0	0	0	0	0.00%
Transfer	51	6	0	57	10.40%
WBIY	1	0	0	1	0.18%
Dual Credit	0	0	31	31	5.66%
Audit	0	0	0	0	0.00%
Continuing	98	109	0	207	37.77%
Total	384	126	38	548	100.00%
Percent	70.07%	22.99%	6.93%		

Demographic Data: Headcount by City of Permanent Residence

City	Count	City	Count	City	Count	City	Count
Akron	2	Griffith	2	New Carlisle	2	Westfield	1
Alexandria	1	Grovertown	3	New Palestine	1	Westville	4
Anderson	1	Hamlet	1	Newburgh	1	Wheatfield	3
Angola	1	Hammond	2	Noblesville	2	Whitestown	1
Argos	15	Hartford City	1	North Judson	11	Whiting	1
Bloomfield	3	Hebron	1	North Liberty	6	Winamac	14
Bourbon	6	Huntington	1	Osceola	1	Wolcottville	1
Bremen	12	Idaville	1	Osgood	1	Foreign	13
Bristol	2	Indianapolis	19	Peru	1	Out of State	52
Burns Harbor	1	Jeffersonville	2	Plainfield	1	Total Count	548
Carmel	1	Kingsbury	1	Plymouth	76		
Centerville	1	Knox	33	Portage	4		
Chesterton	1	Kokomo	2	Porter	1		
Columbus	4	Lafayette	5	Rensselaer	1		
Crown Point	2	Lakeville	4	Richmond	1		
Culver	24	Lapaz	3	Roanoke	1		
Danville	1	LaPorte	12	Rochester	12		
Decatur	2	Leesburg	1	Rolling Prairie	1		
Delphi	1	Leiters Ford	1	San Pierre	2		
Demotte	1	Lewisville	1	Schererville	1		
Donaldson	3	Ligonier	2	Shipshewana	1		
Dyer	1	Logansport	2	Silver Lake	1		
East Chicago	1	Lowell	1	South Bend	27		
Edinburgh	1	Martinsville	2	Sunman	1		
Elkhart	18	Medaryville	3	Syracuse	1		
Fishers	1	Mentone	1	Topeka	2		
Fort Wayne	2	Merrillville	3	Tyner	2		
Fortville	1	Michigan City	4	Union Mills	2		
Francesville	3	Middlebury	3	Valparaiso	7		
Gary	13	Mishawaka	8	Wabash	2		
Georgetown	1	Monroeville	1	Walkerton	16		
Goshen	6	Monterey	4	Wanatah	2		
Granger	1	Monticello	1	Warsaw	2		

Largest Population by City		
Others	254	46%
Plymouth	76	14%
Out of State	52	9%
Knox	33	6%
South Bend	27	5%
Culver	24	4%
Indianapolis	19	3%
Elkhart	18	3%
Walkerton	16	3%
Argos	15	3%
Winamac	14	3%
Totals	548	100%

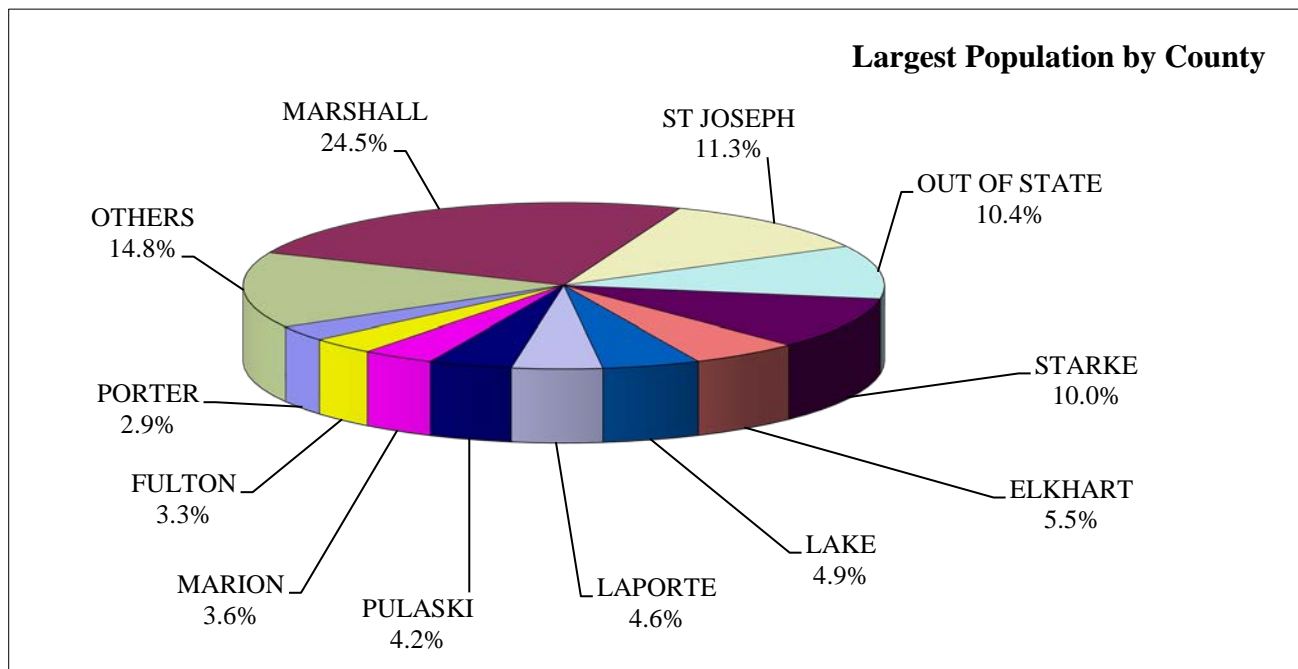


Demographic Data: Headcount by County of Original Residence

Counties	Count
ADAMS	2
ALLEN	3
BARTHOLOMEW	4
BLACKFORD	1
BOONE	1
CARROL	1
CASS	2
CLARK	2
ELKHART	30
FLOYD	1
FOREIGN	11
FULTON	18
GREENE	3
HAMILTON	4
HANCOCK	2
HENDRICKS	2
HENRY	1
HOWARD	2
HUNTINGTON	2
JASPER	5
JOHNSON	1
KOSCIUSKO	5
LAGRANGE	4
LAKE	27
LAPORTE	25
MADISON	2
MARION	20
MARSHALL	134
MORGAN	2
NOBLE	2

Counties	Count
OUT OF STATE	57
PORTER	16
PULASKI	23
RIPLEY	2
ST JOSEPH	62
STARKE	55
STEUBEN	1
TIPPECANOE	6
WABASH	2
WARRICK	1
WAYNE	2
WHITE	2
Total	548

Largest Population by County		
OTHERS	81	14.8%
MARSHALL	134	24.5%
ST JOSEPH	62	11.3%
OUT OF STATE	57	10.4%
STARKE	55	10.0%
ELKHART	30	5.5%
LAKE	27	4.9%
LAPORTE	25	4.6%
PULASKI	23	4.2%
MARION	20	3.6%
FULTON	18	3.3%
PORTER	16	2.9%
Total	548	100%



Demographic Data

Country of Birth

Birth Country	Count
Australia	1
Brazil	2
Canada	1
Ghana	1
Honduras	2
Jamaica	3
Liberia	1
Mexico	7
Nigeria	3
Poland	1
Puerto Rico	2
South Africa	1
Sudan	1
United Kingdom	3
United States	515
Vietnam	4
Total	548

Country of Citizenship

Citizenship Country	Count
Australia	1
Brazil	2
Canada	1
Jamaica	3
Mexico	5
South Africa	1
Sudan	1
United Kingdom	3
United States	527
Vietnam	4
Total	548

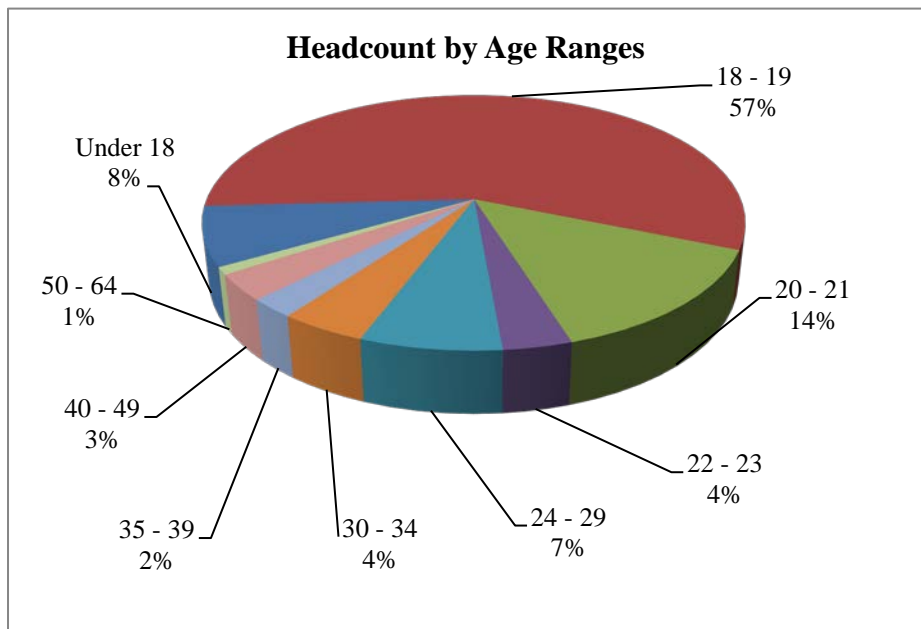
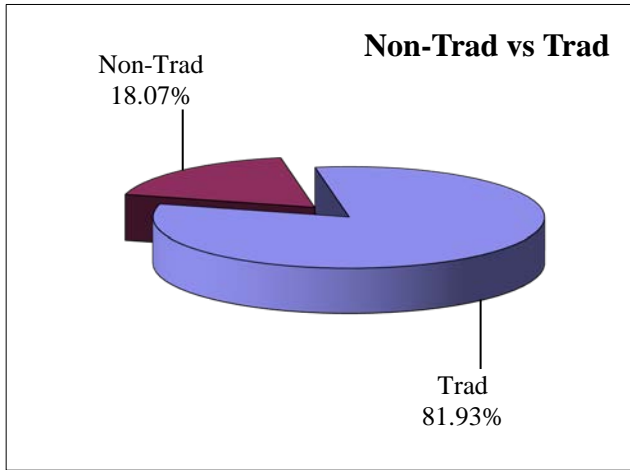
Residence Country	Count
United States	548

Demographic Data: Student Ages

Headcount by Age	
Age Range	Count
Under 18	41
18 - 19	313
20 - 21	76
22 - 23	19
24 - 29	39
30 - 34	24
35 - 39	13
40 - 49	18
50 - 64	5
Total	548

	Count	Percent	Average Age
Trad	449	81.93%	18.8
Non-Trad	99	18.07%	33.8
	548	100.00%	

Average Age			
Semester & Code	All	Non-Trad	Trad
Fall 2011 - 20121	25.98	35.65	19.68
Fall 2012 - 20131	25.77	25.92	19.54
Fall 2013 - 20141	24.50	35.41	19.37
Fall 2014 - 20151	23.42	35.33	19.12
Fall 2015 - 20161	22.22	18.77	35.20
Fall 2016 - 20171	21.90	33.70	18.90
Fall 2017 - 20181	18.83	33.81	21.53



Demographic Data

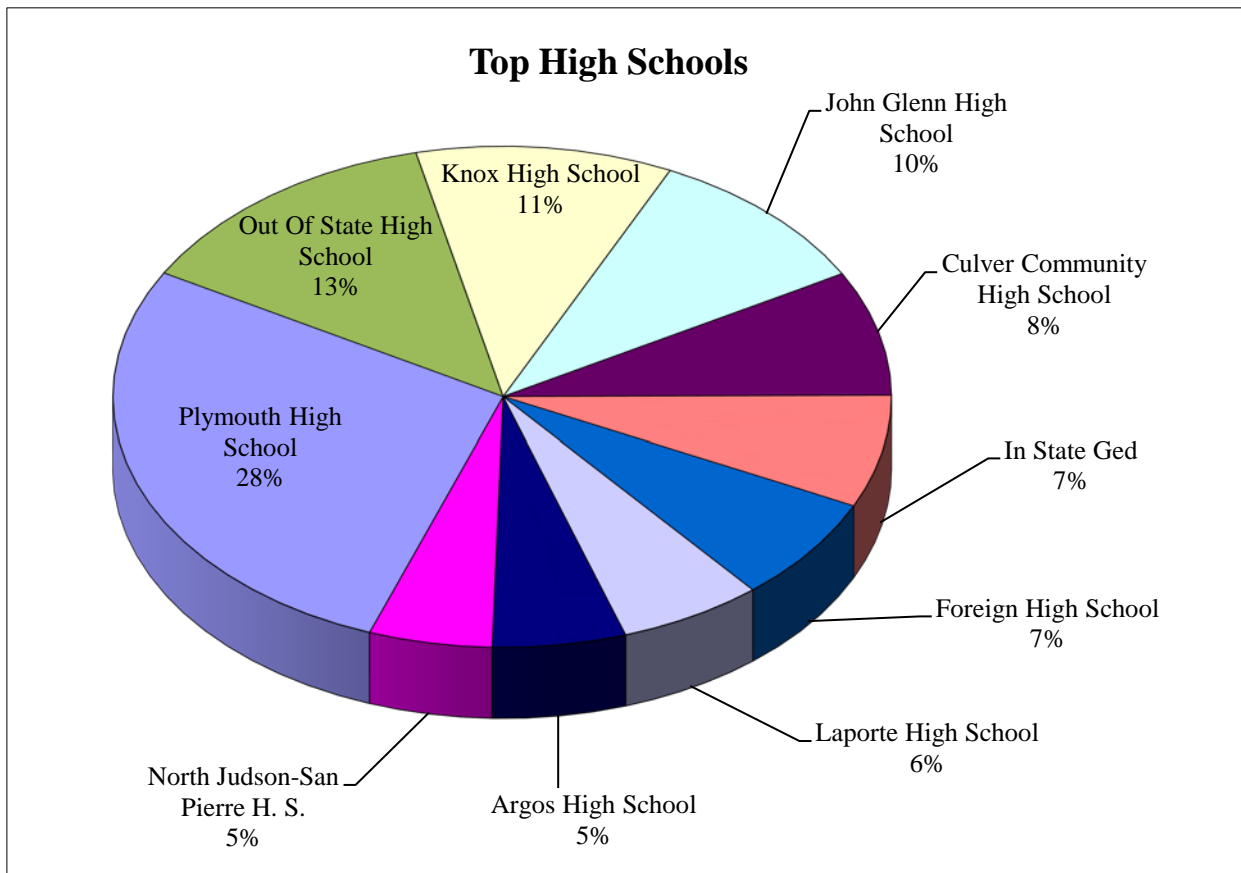
High Schools - All Ancilla Students

High Schools - All Students	Code	Count	High Schools - All Students	Code	Count
<u>High School Name</u>	<u>HS Code</u>	<u>HC</u>	<u>High School Name</u>	<u>HS Code</u>	<u>HC</u>
Alexandria Monroe High School	150025	1	Hammond High School	151445	1
Anderson High School	150050	1	Heritage High School	152375	1
Andrean High School	151225	1	Herron High School	151669	1
Angola High School	150060	1	Hobart High School	151545	1
Argos High School	150090	13	Homewood Flossmoor Cmty High School	142307	1
Arsenal Technical High School	151645	1	Horace Mann High School	151245	1
Avon High School	151647	1	Huntington North High School	151605	1
Belmont High School	150770	2	In State Ged	159999	17
Benjamin Davis High School	151650	1	In State Home School	159993	9
Bishop Luers High School	151083	1	Indiana Connections Academy	151684	1
Bishop Noll Inst	151440	1	Jac-Cen-Del High School	152705	1
Blackford High School	151480	1	Jefferson HS, Lafayette	151910	3
Bloomfield High School	150205	1	Jeffersonville High School	151795	2
Bloomington High School	140335	1	Jimtown High School	150905	3
Boone Grove High School	150245	1	John Adams High School	153260	3
Bremen High School	150290	8	John Glenn High School	153655	23
Calument H S Gary In	151230	3	Joliet Central High School	142385	1
Carmel High School	150445	2	Joliet Township High School West	142373	1
Carver Military Academy	140840	1	Kankakee Valley High School	153780	5
Castle High School	152515	1	Knox High School	151870	25
Caston High School	151210	1	Kokomo HS, Kokomo, In	151875	2
Centerville High School	150470	2	Lacrosse High School	151895	1
Central Catholic High School	151906	1	Lake Central High School	153112	3
Chesterton High School	150500	3	Lakeland High School	151955	3
Clark High School, George Roge	153805	1	Laporte High School	151990	14
Clay High School	153275	5	Laville High School	151970	11
Collins Academy High School	141371	1	Lawrence Central High School	151710	1
Columbus North High School	150610	4	Lawrence North High School	151712	1
Concord High School	150910	5	Lew Wallace High School	151250	1
Crete-Monee High School	141505	2	Logansport High School	152095	2
Crispus Attucks Medical Magnet	151665	2	Lutheran High School	151716	1
Crossing Educational Center	151209	3	Manual, Emmerich High School	151675	1
Crown Point High School	150685	2	Marian High School	152343	5
Culver Community High School	150693	19	Marquette High School	152285	1
Danville High School	150740	2	Martin Luther King Academy	000040	1
Eastern High School - Bloomfield	150203	2	Martinsville High School	152225	2
Edinburgh High School	150885	2	Mccutcheon High School	151936	1
Elkhart Central High School	150915	4	Memorial, Elkhart High School	150916	7
Elwood High School	150930	1	Michigan City High School	152288	2
Fishers High School	151041	1	Milan High School	152310	1
Foreign High School	159995	16	Mishawaka High School	152345	3
Foundations Christian School	152886	3	Morgan Township High School	153560	1
Franklin Central High School	153665	2	Mother McAuley High School	141044	1
Frontier High School	150315	1	Mount Vernon High School, Fortville, In	151080	1
Gary Middle College Cs	151246	1	New Albany High School	152505	1
Goshen High School	151315	4	New Prairie High School	152520	3
Grace Baptist Christian School	152883	1	New Tech At Garu Area Cc	151269	2
Greenwood Christian Academy	151391	1	Noblesville High School	152615	1
Griffith High School, Griffith, In	151405	1	North Judson-San Pierre High School	152625	12
Hamilton Southeastern High School	151045	1	Northridge High School	152295	2
Hammond Academy Science Tech	151449	1	Northrop Sr. High School, Ft Wayne, In	151104	1
Hammond Baptist High School	151243	2	Northwood High School	152495	2

Demographic Data Continued

High Schools - All Ancilla Students

High Schools - All Students	Code	Count	High Schools - All Students	Code	Count
Oak Park-River Forest	143245	1	South Central High School	153530	1
Oregon-Davis High School	151430	6	South Central High School, Elizabeth	150900	1
Out Of State Ged	159998	4	Southport High School	151752	1
Out Of State High School	159994	40	Thea Bowman Leadership Acad	151241	3
Out Of State Home School	159992	1	Thornridge High School	141618	1
Pendleton Heights High School	152785	1	Tippecanoe Valley High School	152255	5
Penn High School	152347	4	Tipton High School	153475	1
Pike High School, Indianapolis	152510	3	Traders Point Christian Acad	153797	1
Pioneer High School	153070	1	Tri Jr/Sr High School	152045	1
Plymouth High School	152885	65	Triton High School	150270	4
Portage High School	150865	5	Valparaiso High School	153565	3
Providence Cristo Rey High School	151668	1	Wabash High School	153625	2
Proviso East High School	142820	1	Warren Central High School	151765	1
Reavis High School	143235	1	Warsaw Community High School	153690	2
Rensselaer Central High School	152950	1	Wawasee High School	153393	1
Riley, James W. High School	153255	4	West Central High School	152245	6
Rochester High School	153020	7	West Noble High School Ligonier In	152075	2
Romeoville High School	142657	1	Westfield Washington High School	153735	1
Saint Charles North High Sch	143796	1	Westview High School, Topeka	153480	3
Seccina Memorial High School	151745	1	Westville High School	153775	5
Seton Academy	143937	1	Wheeler High School	153790	1
Smith Academy For Excellence	151089	1	Winamac Community High School	153842	9
South Bend Career Academy	153274	1			
South Bend Washington HS	153280	9			
			Total:		548



Demographic Data

High Schools - New to Ancilla Students*

School Name	Count
Alexandria Monroe High School	1
Anderson High School	1
Andrean High School	1
Argos High School	9
Avon High School	1
Belmont High School	1
Bishop Luers High School	1
Bishop Noll Inst	1
Bloomington High School	1
Bremen High School	8
Calument H S Gary In	2
Carmel High School	1
Carver Military Academy	1
Centerville High School	2
Central Catholic High School	1
Chesterton High School	3
Clark High School, George Roge	1
Clay High School	3
Collins Academy High School	1
Columbus North High School	3
Concord High School	2
Crete-Monee High School	2
Crispus Attucks Medical Magnet	2
Crossing Educational Center	2
Crown Point High School	1
Culver Community High School	10
Danville High School	1
Eastern High School - Bloomfield	1
Edinburgh High School	1
Elkhart Central High School	1
Elwood High School	1
Fishers High School	1
Foreign High School	9
Foundations Christian School	1
Franklin Central High School	2
Gary Middle College Cs	1
Goshen High School	2
Greenwood Christian Academy	1
Griffith High School, Griffith, In	1
Hamilton Southeastern High School	1
Hammond Academy Science Tech	1
Hammond Baptist High School	1
Homewood Flossmoor Cmty High School	1
Huntingon North High School	1
In State Ged	8
In State Home School	3
Jac-Cen-Del High School	1
Jefferson High School, Lafayette	3
Jeffersonville High School	2
John Adams High School	3
John Glenn High School	8

School Name	Count
Joliet Central High School	1
Joliet Township High School West	1
Kankakee Valley High School	4
Knox High School	12
Lake Central High School	1
Lakeland High School	1
Laporte High School	11
Laville High School	8
Lawrence North High School	1
Lew Wallace High School	1
Logansport High School	2
Manual, Emmerich High School	1
Marian High School	1
Marquette High School	1
Martinsville High School	2
Mccutcheon High School	1
Memorial, Elkhart High School	2
Michigan City High School	1
Milan High School	1
Mishawaka High School	3
Mother Mcauley High School	1
Mount Vernon High School, Fortville, In	1
New Albany High School	1
New Prairie High School	1
New Tech At Garu Area Cc	1
Noblesville High School	1
North Judson-San Pierre High School	3
Northridge High School	1
Oak Park-River Forest	1
Oregon-Davis High School	4
Out Of State Ged	2
Out Of State High School	24
Pendleton Heights High School	1
Pike High School, Indianapolis	3
Pioneer High School	1
Plymouth High School	36
Portage High School	3
Proviso East High School	1
Reavis High School	1
Rensselaer Central High School	1
Riley, James W. High School	3
Rochester High School	6
Romeoville High School	1
Saint Charles North High Sch	1
Seton Academy	1
Smith Academy For Excellence	1
South Bend Career Academy	1
South Bend Washington High School	4
Southport High School	1
Thea Bowman Leadership Acad	3
Thornridge High School	1

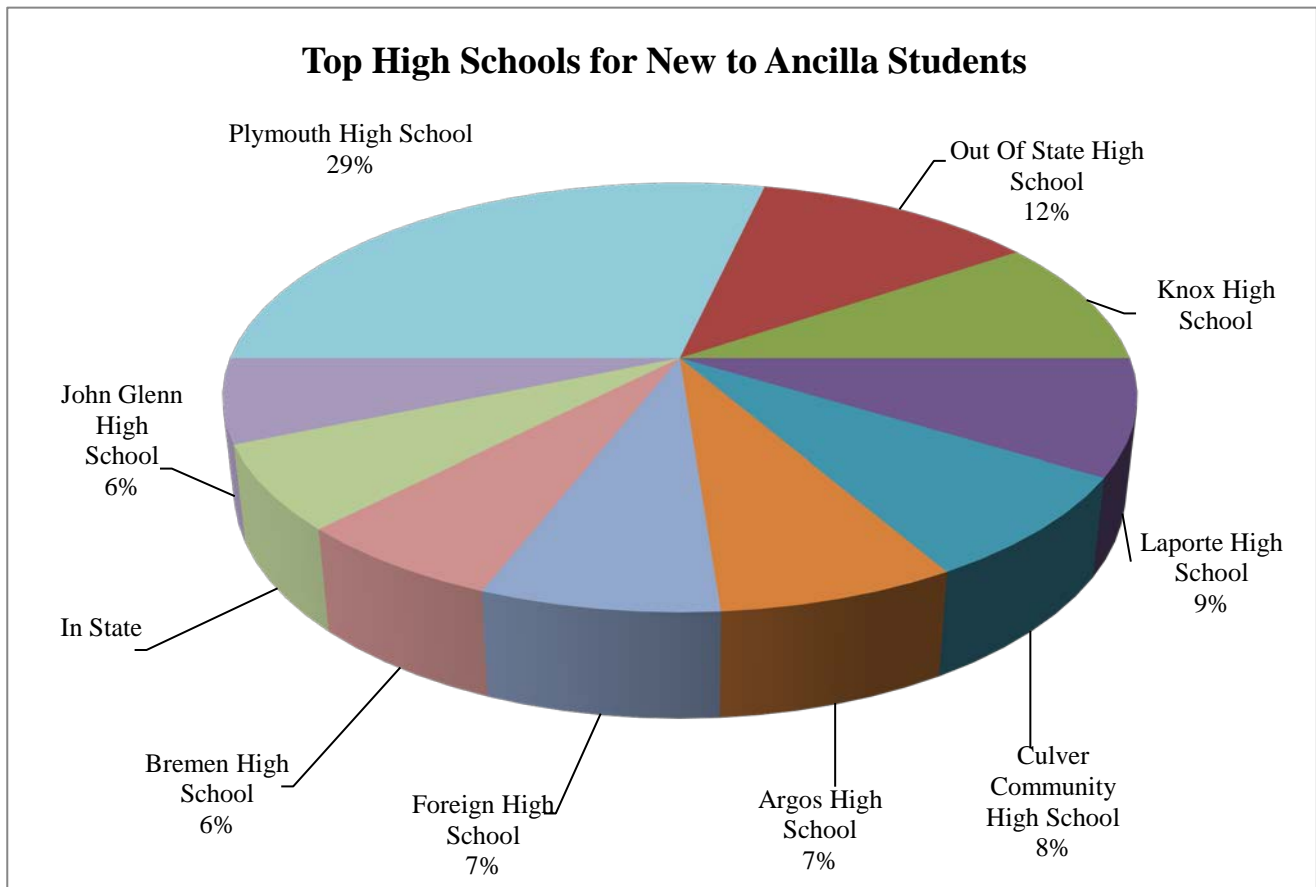
***includes: New - transfers, WBIY, guests, early birds, dual credit, or first time college students.**

Demographic Data Continued

High Schools - New to Ancilla Students*

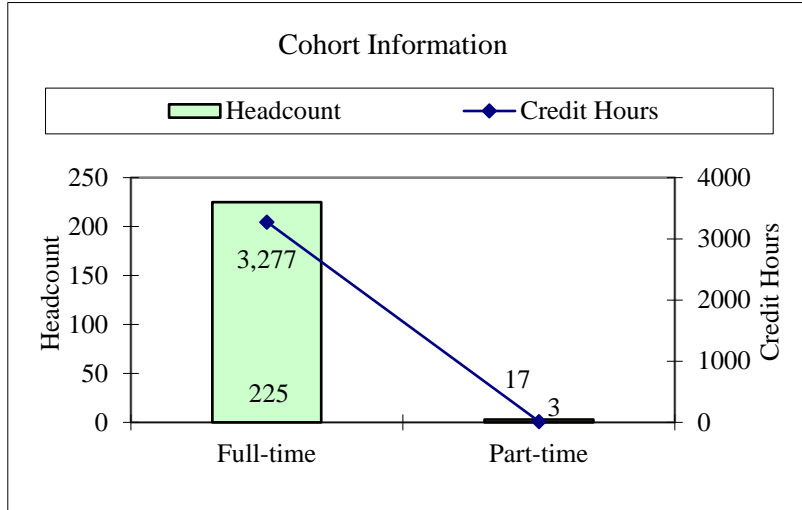
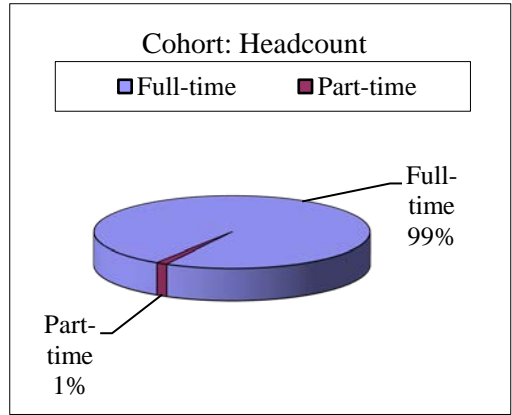
School Name	Count
Tippecanoe Valley High School	2
Tipton High School	1
Tri Jr/Sr High School	1
Triton High School	3
Valparaiso High School	3
Warren Central High School	1
Warsaw Community High School	1
Wawasee High School	1

School Name	Count
West Central High School	6
West Noble High School Ligonier In	1
Westfield Washington High School	1
Westville High School	3
Wheeler High School	1
Winamac Community High School	5
Total Students New to Ancilla*	315

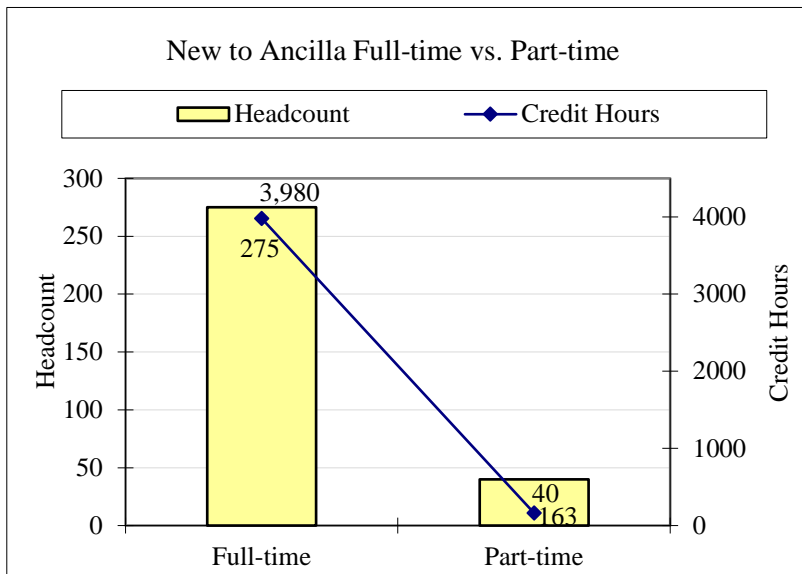
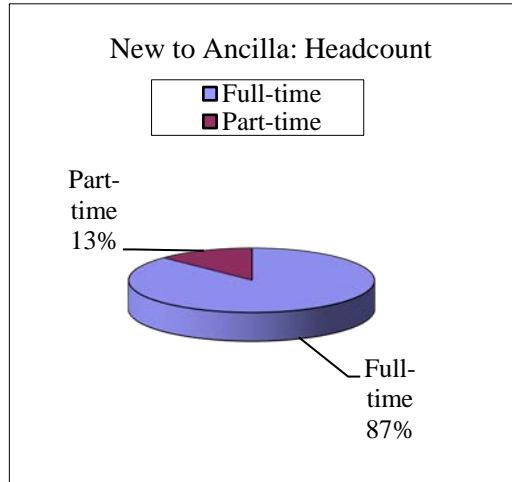


Cohort Information (First Time - Students)

Cohort Information		
	Headcount	Credit Hours
Full-time	225	3277
Part-time	3	17
Total	228	3294



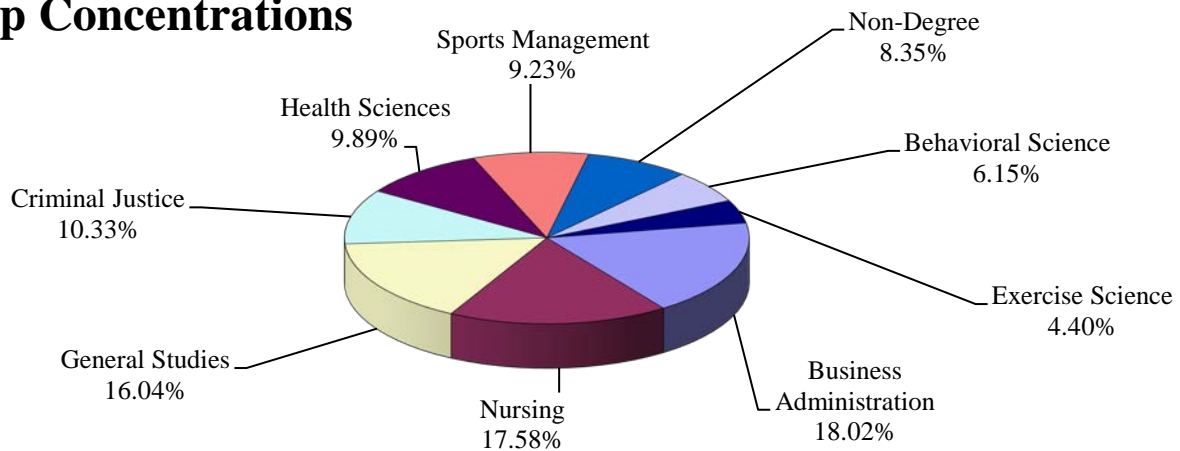
New to Ancilla Full-time vs. Part-time		
	Headcount	Credit Hours
Full-time	275	3980
Part-time	40	163
Total	315	4143



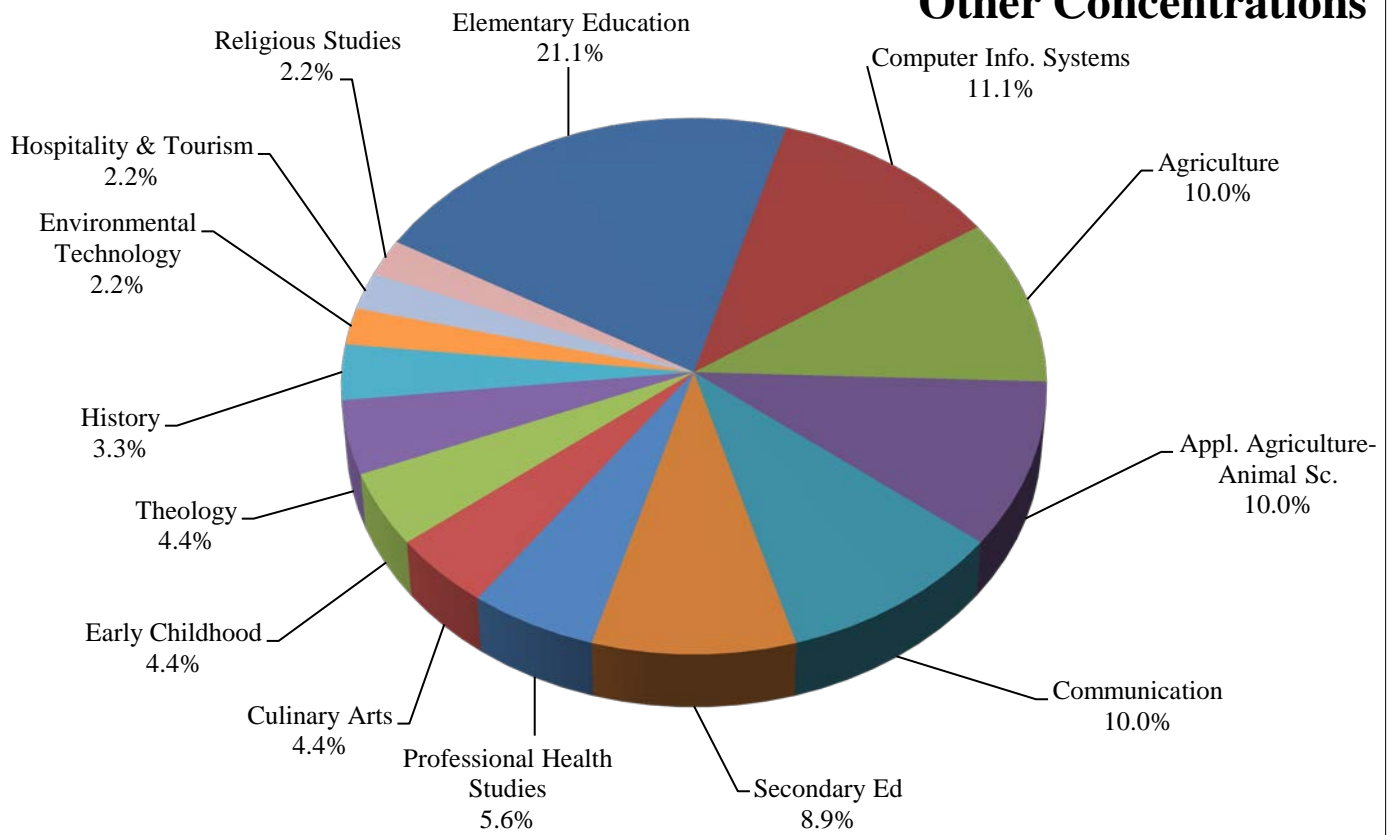
Concentration Information

Concentration	Totals	%	Non-Trad	Trad	Fulltime	Part-time	Freshman	Sophomore	Non-Degree
Admin. Medical Assistant	0	0.0%	0	0	0	0	0	0	0
Agriculture	9	1.6%	0	9	9	0	5	4	0
Appl. Agriculture-Animal Sc.	9	1.6%	1	8	9	0	8	1	0
Behavioral Science	28	5.1%	6	22	24	4	22	6	0
Business Administration	82	15.0%	5	77	76	6	63	19	0
Clinical Medical Assistant	1	0.2%	1	0	0	1	0	1	0
Communication	9	1.6%	1	8	9	0	7	2	0
Computer Info. Systems	10	1.8%	0	10	10	0	10	0	0
Criminal Justice	47	8.6%	2	45	44	3	42	5	0
Culinary Arts	4	0.7%	1	3	4	0	4	0	0
Early Childhood	4	0.7%	1	3	3	1	2	2	0
Education	0	0.0%	0	0	0	0	0	0	0
Elementary Education	19	3.5%	1	18	18	1	15	4	0
English	1	0.2%	0	1	0	1	1	0	0
Environmental Technology	2	0.4%	0	2	2	0	2	0	0
Exercise Science	20	3.6%	0	20	19	1	15	5	0
General Studies	73	13.3%	9	64	65	8	64	9	0
Health Sciences	45	8.2%	13	32	34	11	41	4	0
History	3	0.5%	0	3	3	0	3	0	0
Hospitality & Tourism	2	0.4%	0	2	2	0	1	1	0
Logistics & Transportation	0	0.0%	0	0	0	0	0	0	0
Mass Communication	0	0.0%	0	0	0	0	0	0	0
Non-Degree	38	6.9%	0	38	1	37	0	0	38
Nursing	80	14.6%	53	27	58	22	26	54	0
Professional Health Studies	5	0.9%	0	5	5	0	5	0	0
Pursuing Degree Elsewhere	0	0.0%	0	0	0	0	0	0	0
Religious Studies	2	0.4%	0	2	2	0	2	0	0
Science	1	0.2%	0	1	1	0	1	0	0
Secondary Ed	8	1.5%	0	8	8	0	7	1	0
Sports Management	42	7.7%	1	41	41	1	37	5	0
Theology	4	0.7%	4	0	4	0	1	3	0
Totals	548	100%	99	449	451	97	384	126	38
Credit Hours	7077		1110	5967	6541	536	5422	1517	138

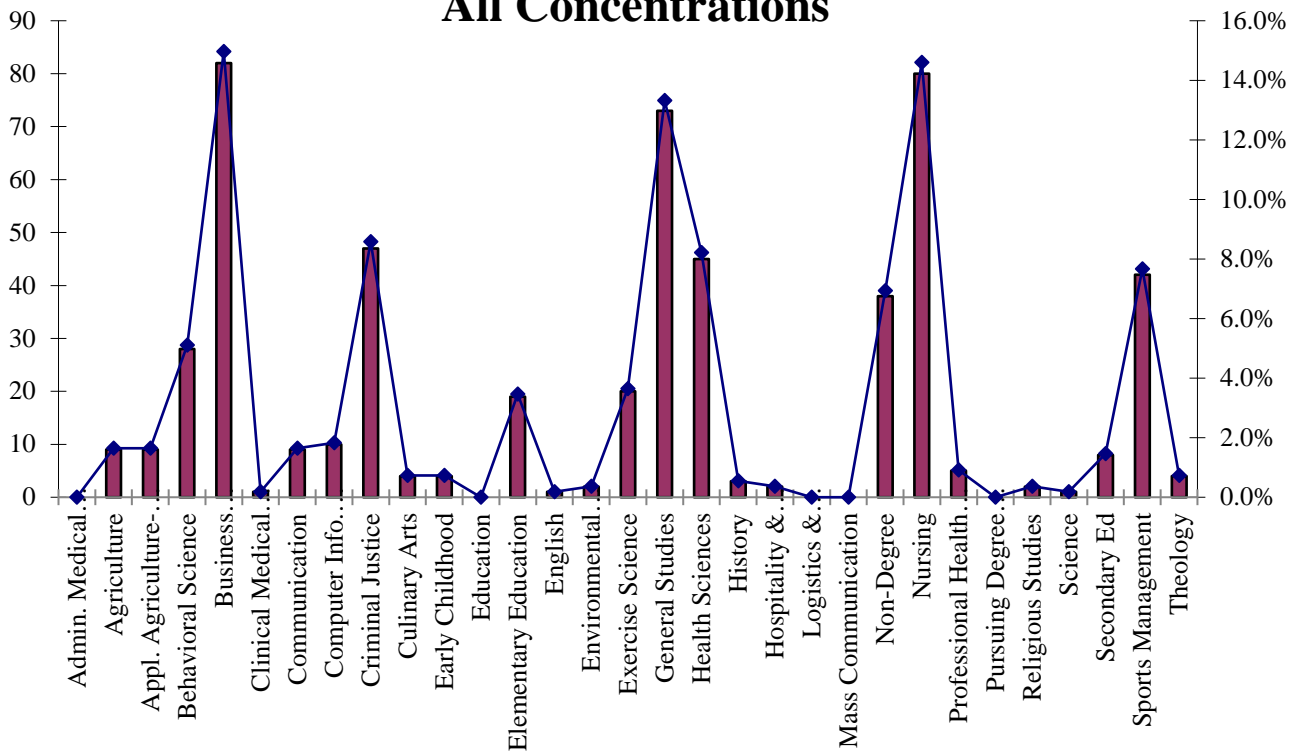
Top Concentrations



Other Concentrations



All Concentrations



Concentration Information

	New	Re-Entry	Audit	Early Bird	Guest	Transfer	WBIY	Dual Credit	Continuing	Total
Concentrations by Entry Code	1	2	3	4	5	6	7	8	0	Count
Admin. Medical Assistant	0	0	0	0	0	0	0	0	0	0
Agriculture	3	0	0	0	0	0	0	0	6	9
Appl. Agriculture-Animal Sc.	5	0	0	0	0	1	0	0	3	9
Behavioral Science	11	1	0	0	0	3	0	0	13	28
Business Administration	37	1	0	0	0	9	0	0	35	82
Clinical Medical Assistant	0	0	0	0	0	0	0	0	1	1
Communication	7	1	0	0	0	0	0	0	1	9
Computer Information Systems	6	0	0	0	0	1	0	0	3	10
Criminal Justice	25	4	0	0	0	6	0	0	12	47
Culinary Arts	3	1	0	0	0	0	0	0	0	4
Early Childhood	1	0	0	0	0	2	0	0	1	4
Elementary Education	9	1	0	0	0	0	0	0	9	19
Education	0	0	0	0	0	0	0	0	0	0
English	1	0	0	0	0	0	0	0	0	1
Environmental Technology	1	0	0	0	0	1	0	0	0	2
Exercise Science	11	1	0	0	0	1	0	0	7	20
General Studies	38	2	0	0	0	7	1	0	25	73
Health Sciences	25	3	0	0	0	7	0	0	10	45
History	1	0	0	0	0	0	0	0	2	3
Hospitality & Tourism	1	0	0	0	0	0	0	0	1	2
Logistics & Inventory Systems	0	0	0	0	0	0	0	0	0	0
Mass Communication	0	0	0	0	0	0	0	0	0	0
Non-Degree	0	0	0	7	0	0	0	31	0	38
Nursing	7	1	0	0	0	14	0	0	58	80
Professional Health Studies	5	0	0	0	0	0	0	0	0	5
Religious Studies	2	0	0	0	0	0	0	0	0	2
Science	1	0	0	0	0	0	0	0	0	1
Secondary Ed	5	0	0	0	0	0	0	0	3	8
Sports Management	22	2	0	0	0	5	0	0	13	42
Theology	0	0	0	0	0	0	0	0	4	4
Totals	227	18	0	7	0	57	1	31	207	548
Credit Hours	3278	173	0	45	0	755	16	93	2717	7077

Concentration Information Continued

Concentrations by Gender	Female	Percent	Male	Percent	Totals
Admin. Medical Assistant	0	0.00%	0	0.00%	0
Agriculture	3	0.55%	6	1.09%	9
Appl. Agriculture-Animal Sc.	7	1.28%	2	0.36%	9
Behavioral Science	24	4.38%	4	0.73%	28
Business Administration	26	4.74%	56	10.22%	82
Clinical Medical Assistant	1	0.18%	0	0.00%	1
Communication	4	0.73%	5	0.91%	9
Computer Information Systems	4	0.73%	6	1.09%	10
Criminal Justice	14	2.55%	33	6.02%	47
Culinary Arts	3	0.55%	1	0.18%	4
Early Childhood	4	0.73%	0	0.00%	4
Elementary Education	17	3.10%	2	0.36%	19
Education	0	0.00%	0	0.00%	0
English	1	0.18%	0	0.00%	1
Environmental Technology	0	0.00%	2	0.36%	2
Exercise Science	9	1.64%	11	2.01%	20
General Studies	27	4.93%	46	8.39%	73
Health Sciences	39	7.12%	6	1.09%	45
History	0	0.00%	3	0.55%	3
Hospitality & Tourism	0	0.00%	2	0.36%	2
Logistics & Inventory Systems	0	0.00%	0	0.00%	0
Mass Communication	0	0.00%	0	0.00%	0
Non-Degree	17	3.10%	21	3.83%	38
Nursing	72	13.14%	8	1.46%	80
Professional Health Studies	3	0.55%	2	0.36%	5
Religious Studies	1	0.18%	1	0.18%	2
Science	0	0.00%	1	0.18%	1
Secondary Ed	3	0.55%	5	0.91%	8
Sports Management	7	1.28%	35	6.39%	42
Theology	4	0.73%	0	0.00%	4
Totals	290	52.92%	258	47.08%	548

Concentration Information

Concentrations by Class	Freshman	Sophomore	Unclassified	Total	CIP Code
Admin. Medical Assistant	0	0	0	0	51.0716
Agriculture	5	4	0	9	01.0000
Appl. Agriculture-Animal Sc.	8	1	0	9	01.0901
Behavioral Science	22	6	0	28	30.1701
Business Administration	63	19	0	82	52.0201
Clinical Medical Assistant	0	1	0	1	51.0802
Communication	7	2	0	9	09.0101
Computer Info. Systems	10	0	0	10	11.0101
Criminal Justice	42	5	0	47	43.0104
Culinary Arts	4	0	0	4	12.0599
Early Childhood	2	2	0	4	13.1210
Education	0	0	0	0	13.0101
Elementary Education	15	4	0	19	13.1202
English	1	0	0	1	23.0101
Environmental Technology	2	0	0	2	03.0103
Exercise Science	15	5	0	20	31.0505
General Studies	64	9	0	73	24.0101
Health Sciences	41	4	0	45	51.0000
History	3	0	0	3	54.0101
Hospitality & Tourism	1	1	0	2	52.0999
Logistics & Transportation	0	0	0	0	52.0203
Mass Communication	0	0	0	0	09.0102
Non-Degree	0	0	38	38	99.9999
Nursing	26	54	0	80	51.3801
Professional Health Studies	5	0	0	5	51.1199
Pursuing Degree Elsewhere	0	0	0	0	99.9999
Religious Studies	2	0	0	2	38.0299
Science	1	0	0	1	30.0101
Secondary Ed	7	1	0	8	13.1205
Sports Management	37	5	0	42	52.0299
Theology	1	3	0	4	39.9999
Totals	384	126	38	548	

Traditional - Nontraditional Information

Headcount / Credit Hours					
	Count	%	Cr Hrs	%	Average
Trad	449	81.93%	5967	84.32%	13.29
NonTrad	99	18.07%	1110	15.68%	11.21
Totals	548	100.00%	7077	100.00%	12.91

Gender / Credit Hours						
	Male	%	Average	Female	%	Average
Trad	3187	45.03%	13.33	2780	39.28%	13.24
NonTrad	210	2.97%	11.05	900	12.72%	11.25
Totals	3397	48.00%		3680	52.00%	
Average			13.17			12.69

Gender / Headcount				
	Male	%	Female	%
Trad	239	43.61%	210	38.32%
NonTrad	19	3.47%	80	14.60%
Totals	258	47.08%	290	52.92%

Full-time Headcount / Credit Hours					
	Count	%	Cr Hrs	%	Average
Trad	392	71.53%	5714	80.74%	14.58
NonTrad	59	10.77%	827	11.69%	14.02
Totals	451	82.30%	6541	92.43%	14.50

Part-time Headcount / Credit Hours					
	Count	%	Cr Hrs	%	Average
Trad	57	10.40%	253	46.17%	4.44
NonTrad	40	7.30%	283	51.64%	7.08
Totals	97	17.70%	536	97.81%	5.53

Athlete Information

Headcount/Credit Hours

	Male	Female	Total
Headcount	170	105	275
Credit Hours	2463	1554	4017

Headcount by Class/Gender

	Male	Female	Total
Freshman	147	88	235
Sophomore	23	17	40
Total	170	105	275

Credit Hours Class/Gender

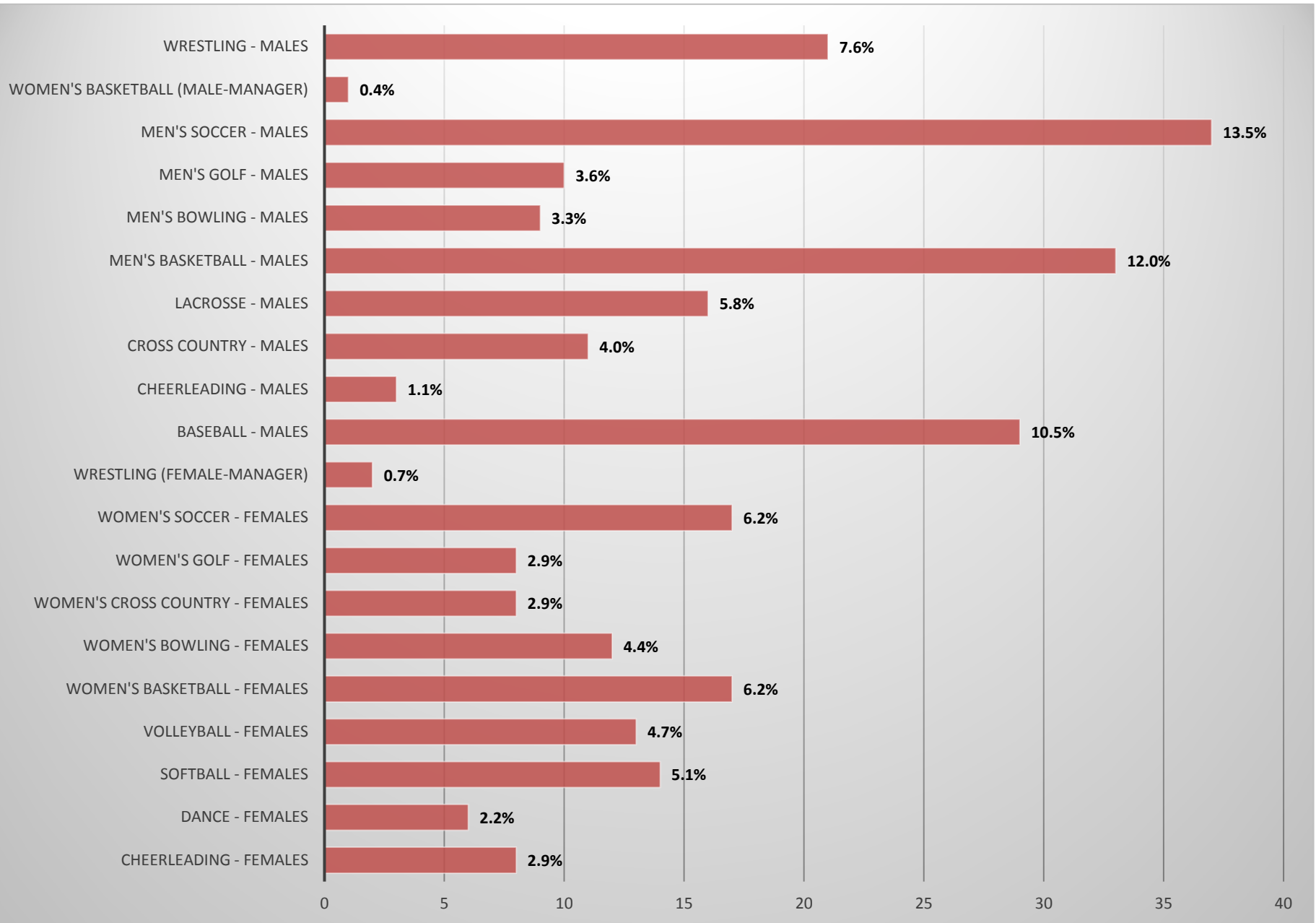
	Male	Female	Total
Freshman	2133	1295	3428
Sophomore	330	259	589
Total	2463	1554	4017

Percent of Total Student Population

	Headcount	Cr. Hrs
Total Population	275	4017
% Athletes	100%	100%

**Some athletes may participate in multiple sports*

Athlete Information Continued



Nursing Information

Credit Hours / Headcount			
	Male	Female	Total
Headcount	8	72	80
Credit Hours	95	871	966

Headcount by Class/Gender			
	Male	Female	Total
Freshman	2	24	26
Sophomore	6	48	54
Total	8	72	80

Credit Hours by Class/Gender			
	Male	Female	Total
Freshman	31	314	345
Sophomore	64	557	621
Total	95	871	966

Percent of Student Population		
	Count	Cr. Hrs.
Total Population	80	966
% Nursing	100%	100%

Headcount by Class and Entry Code				
Original Student Entry Code	Freshman	Sophomore	Totals	
New	7	0	7	8.75%
Re-entry	0	1	1	1.25%
Guest	0	0	0	0.00%
Transfer	10	4	14	17.50%
Continuing	9	49	58	72.50%
Total	26	54	80	100%
Percent	32.50%	67.50%		

1st Generation Information

Credit Hours / Headcount

1st Generation New to Ancilla	Male	Female	Total
Headcount	45	43	88
Credit Hours	630	610	1240

2017 Fall All New to Ancilla Students

	Headcount	Cr. Hrs.
New to Ancilla Students	315	4143
% 1st Generation Students	27.94%	29.93%

2017 Fall Student Population

	Headcount	Cr. Hrs.
Total Population	548	7077
% 1st Generation Students	16.06%	17.52%

Additional Information

Credit Hours by Class/Gender			
	Male	Female	Total
Freshman	2818	2604	5422
Sophomore	503	1014	1517
Non-Degree/Unclassified	76	62	138
Total	3397	3680	7077

Headcount by Class/Gender			
	Male	Female	Total
Freshman	196	188	384
Sophomore	41	85	126
Non-Degree/Unclassified	21	17	38
Total	258	290	548

New Non-Degree Audit Students			
	Male	Female	Total
Credit Hours**	0	0	0
Headcount	0	0	0

New Early Bird Students			
	Male	Female	Total
Credit Hours	0	2	2
Headcount	0	10	10

New Guest Students			
	Male	Female	Total
Credit Hours	0	0	0
Headcount	0	0	0

New Dual Credit Students			
	Male	Female	Total
Credit Hours	48	36	84
Headcount	16	12	28

**Credit Hours of Audit Courses are not included in official counts