

Enrollment Report

Office of the Registrar

Fall 2016

20171

October 4, 2016

Index

Additional Information	30	Faculty FTE	8
Age	14	First Generation - Information	29
Athlete - Information	26-27	Full-time vs Part-time	25
Average Age	14	Gender	9
Average Student Load	8	High School - All Students	15-16
City	11	High School - New to Ancilla	18
Class	10	Marital Status	9
Cohort - First Time - Full-time	19	New to Ancilla - FT vs PT	19
Cohort - First Time - Part-time	19	Non Degree Students	30
Cohort Info	19	Number of Sections Offered	8
Concentration Information	20	Nursing - Information	28
Concentrations - All Chart	21-22	Online Courses - Offered	8
Concentrations - CIP Codes	24	Religion	10
Concentrations - Other - Chart	21	Retention - 1st Term Freshman	6
Concentrations - Top - Chart	20	Retention - All Freshman	2
Concentrations by Class	10 & 24	Retention - All Students	2
Concentrations by Entry Code	22	Retention - Athletes	7
Concentrations by Full-time/PT	20	Retention - Charts	2-5, 7
Concentrations by Gender	23	Retention - Sophomores	6
Concentrations by Trad/Non Tra	20	Student FTE	8
Country	13	Student/Faculty Ratio	8
County	12	Top High School Chart	18
Credit Hours by Class	30	Trad - Non Trad Chart	14
Credit Hours by College	1	Web Assisted Courses - Offered	8
Credit Hours by Gender	9		
Entry Code	1		
Ethnicity	9		

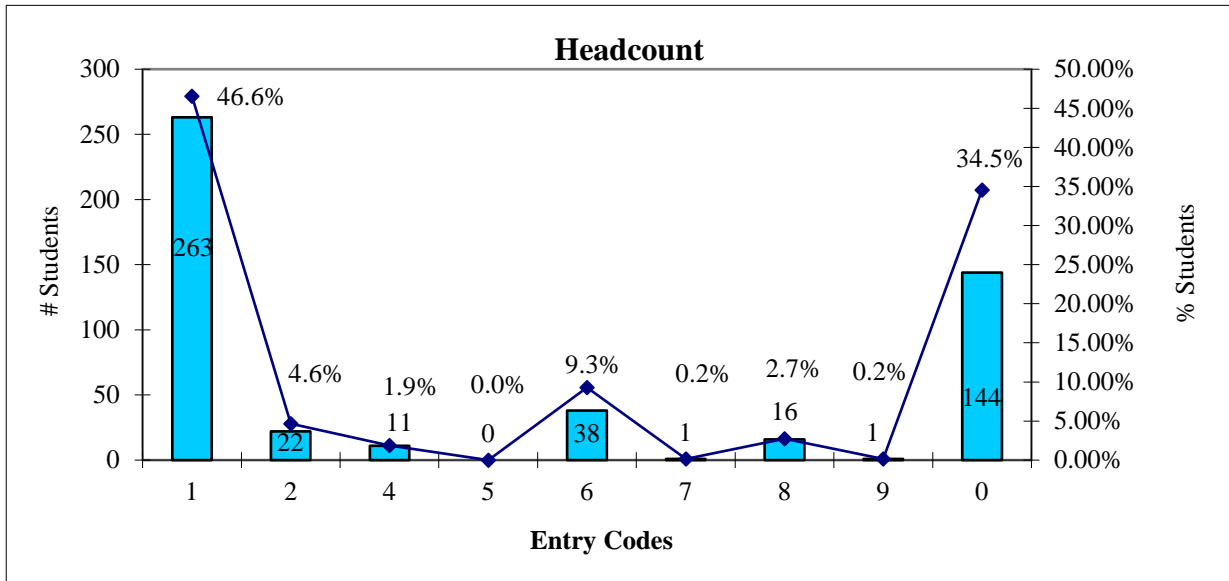
Notes:

Page 8 - Student Faculty Ratio: New formula used to determine Student/ Faculty Ratio

FTE Students ÷ FTE Faculty = Student Faculty Ratio

(old formula: Total # Students ÷ FTE Faculty = Student/Faculty Ratio)

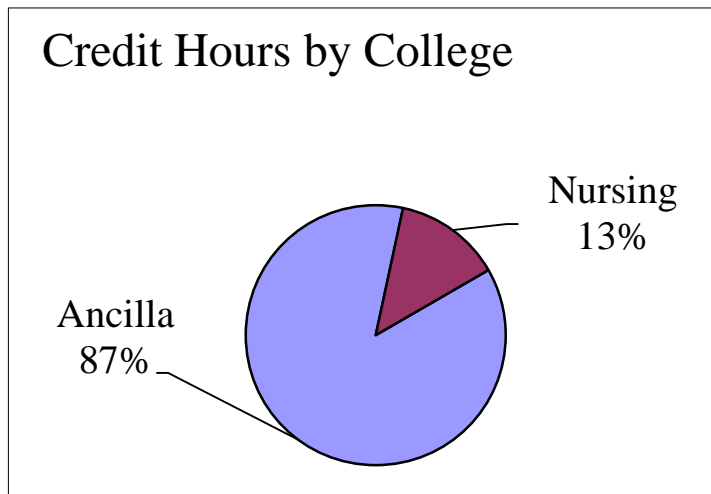
Entry Codes										
Headcount	New	Re-entry	Early Bird	Guest	Transfer	WBIY	Dual Credit	Non-Degree	Continuing	Total
	1	2	4	5	6	7	8	9	0	
Ancilla	263	22	11	0	38	1	16	1	144	496
Nursing	8	5	0	0	16	0	0	0	57	86
Total	271	27	11	0	54	1	16	1	201	582
Total Percent	46.56%	4.64%	1.89%	0.00%	9.28%	0.17%	2.75%	0.17%	34.54%	100%



Credit Hours by College	
College	Credit Hours
Ancilla	6536
Nursing	1002
Total	7538

Headcount	New	Re-entry	Continuing	Total
Degree Seeking	271	18	201	490
Transfer	54	9	0	63
Guest	0	0	0	0
Audit	1	0	0	1
WBIY	1	0	0	1
Early Bird	6	2	3	11
Dual Credit	15	0	1	16
	348	29	205	582

**Audit credits are not counted in the overall credit total.



Retention Report

Spring to Fall - All

Fall	Previous Spring Headcount (less Grads)	Headcount Enrolled for Fall (incl. Grad Appl)	%
2016	361	207	57.34%
2015	290	165	56.90%
2014	305	159	52.13%
2013	331	189	57.10%
2012	387	226	58.40%
2011	443	272	61.40%
2010	463	280	60.48%
2009	433	268	61.89%
2008	390	225	57.69%
2007	385	251	65.19%
2006	433	247	57.04%

Fall to Fall - All

Fall 2016	Previous Fall Headcount (less Grads)	Headcount Enrolled for Fall (incl. Grad Appl)	%
2015-2016	424	188	44.34%
2014-2015	339	149	43.95%
2013-2014	354	147	41.53%
2012-2013	374	170	45.45%
2011-2012	442	204	46.15%
2010-2011	478	232	48.54%
2009-2010	476	238	50.00%
2008-2009	418	215	51.44%
2007-2008	406	200	49.26%
2006-2007	407	222	54.55%
2005-2006	504	227	45.04%

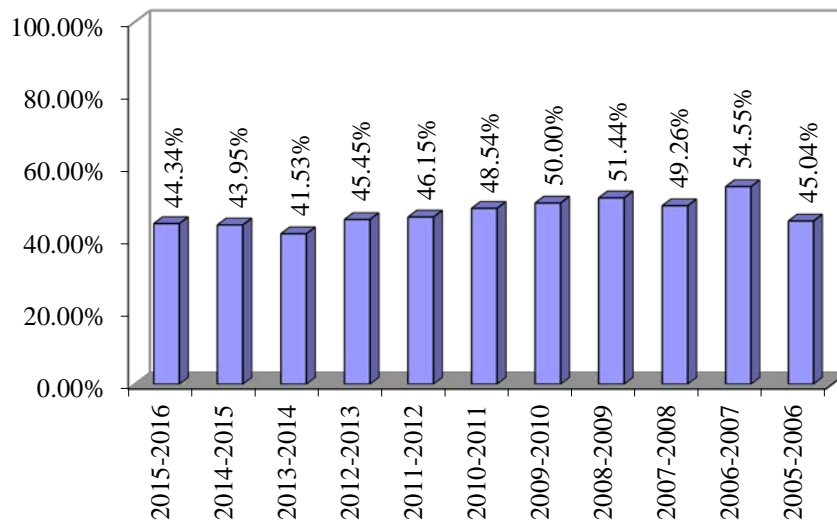
Spring to Fall - All Freshman

Fall	Previous Spring Freshman Headcount	Headcount Enrolled for Fall	%
2016	242	139	57.44%
2015	199	123	61.81%
2014	213	117	54.93%
2013	190	115	60.53%
2012	228	133	58.33%
2011	284	166	58.45%
2010	310	179	57.74%
2009	294	180	61.22%
2008	244	143	58.61%
2007	223	142	63.68%
2006	243	143	58.85%

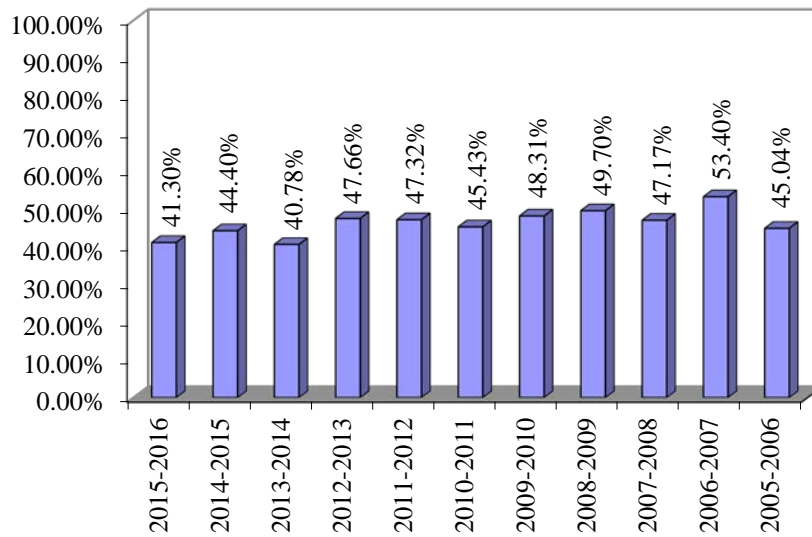
Fall to Fall - All Freshman

Fall 2016	Previous Fall Freshman Headcount	Headcount Enrolled for Fall	%
2015-2016	339	140	41.30%
2014-2015	268	119	44.40%
2013-2014	282	115	40.78%
2012-2013	256	122	47.66%
2011-2012	317	150	47.32%
2010-2011	394	179	45.43%
2009-2010	385	186	48.31%
2008-2009	330	164	49.70%
2007-2008	318	150	47.17%
2006-2007	294	157	53.40%
2005-2006	504	227	45.04%

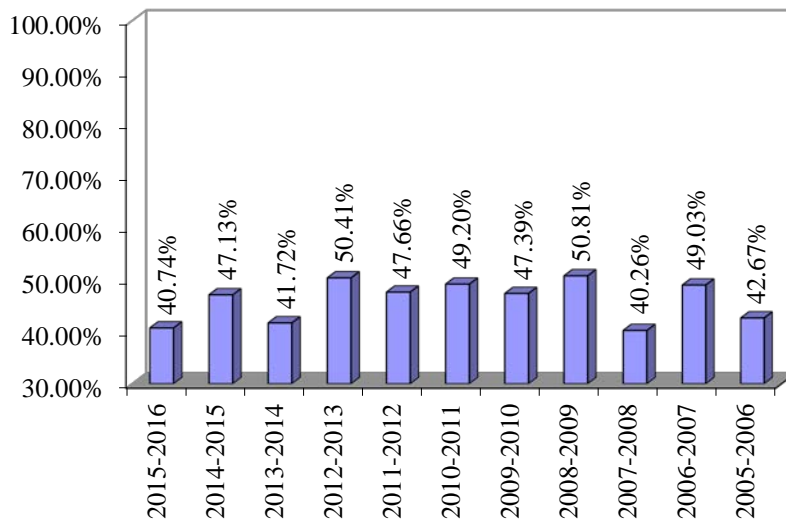
Retention - Fall to Fall - All Students



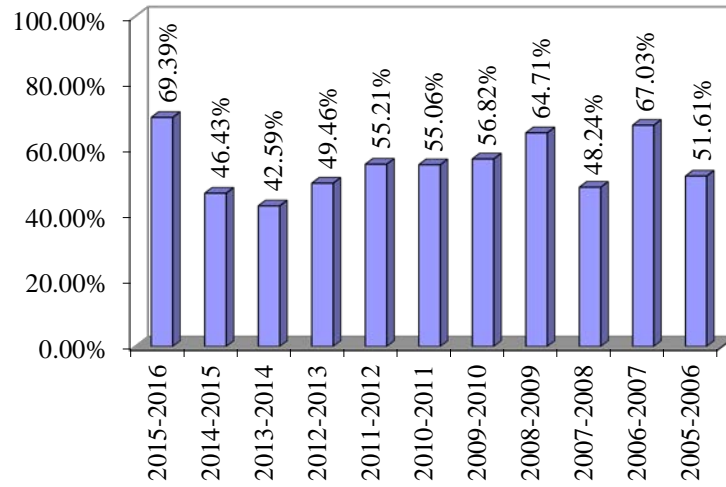
Retention - Fall to Fall - All Freshman



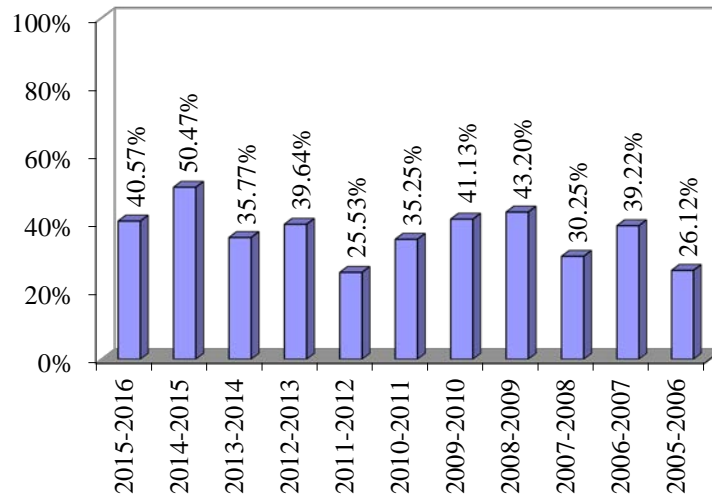
Retention - Fall to Fall - 1st Term Freshman



Retention - Fall to Fall - Sophomores



Retention - Fall to Fall - Athletes



Retention Report

Spring to Fall - 1st Term Freshman

Fall	Previous Spring 1st Term Freshman Headcount	Headcount Enrolled for Fall	%
2016	39	24	61.54%
2015	25	13	52.00%
2014	24	8	33.33%
2013	17	12	70.59%
2012	20	8	40.00%
2011	20	12	60.00%
2010	56	35	62.50%
2009	69	43	62.32%
2008	15	10	66.67%
2007	11	7	63.64%
2006	18	9	50.00%

Fall to Fall - 1st Term Freshman

Fall 2016	Previous Fall 1st Term Freshman Headcount	Headcount Enrolled for Fall	%
2015-2016	270	110	40.74%
2014-2015	174	82	47.13%
2013-2014	151	63	41.72%
2012-2013	121	61	50.41%
2011-2012	128	61	47.66%
2010-2011	187	92	49.20%
2009-2010	211	100	47.39%
2008-2009	185	94	50.81%
2007-2008	154	62	40.26%
2006-2007	155	76	49.03%
2005-2006	150	64	42.67%

Spring to Fall - Sophomores

Fall	Previous Spring Sophomore Headcount (less Grads)	Headcount Enrolled for Fall (incl. Grad Appl)	%
2016	89	55	61.80%
2015	69	36	52.17%
2014	65	32	49.23%
2013	124	71	57.26%
2012	140	89	63.57%
2011	132	89	67.42%
2010	149	100	67.11%
2009	122	81	66.39%
2008	145	74	51.03%
2007	137	102	74.45%
2006	158	97	61.39%

Fall to Fall - Sophomores

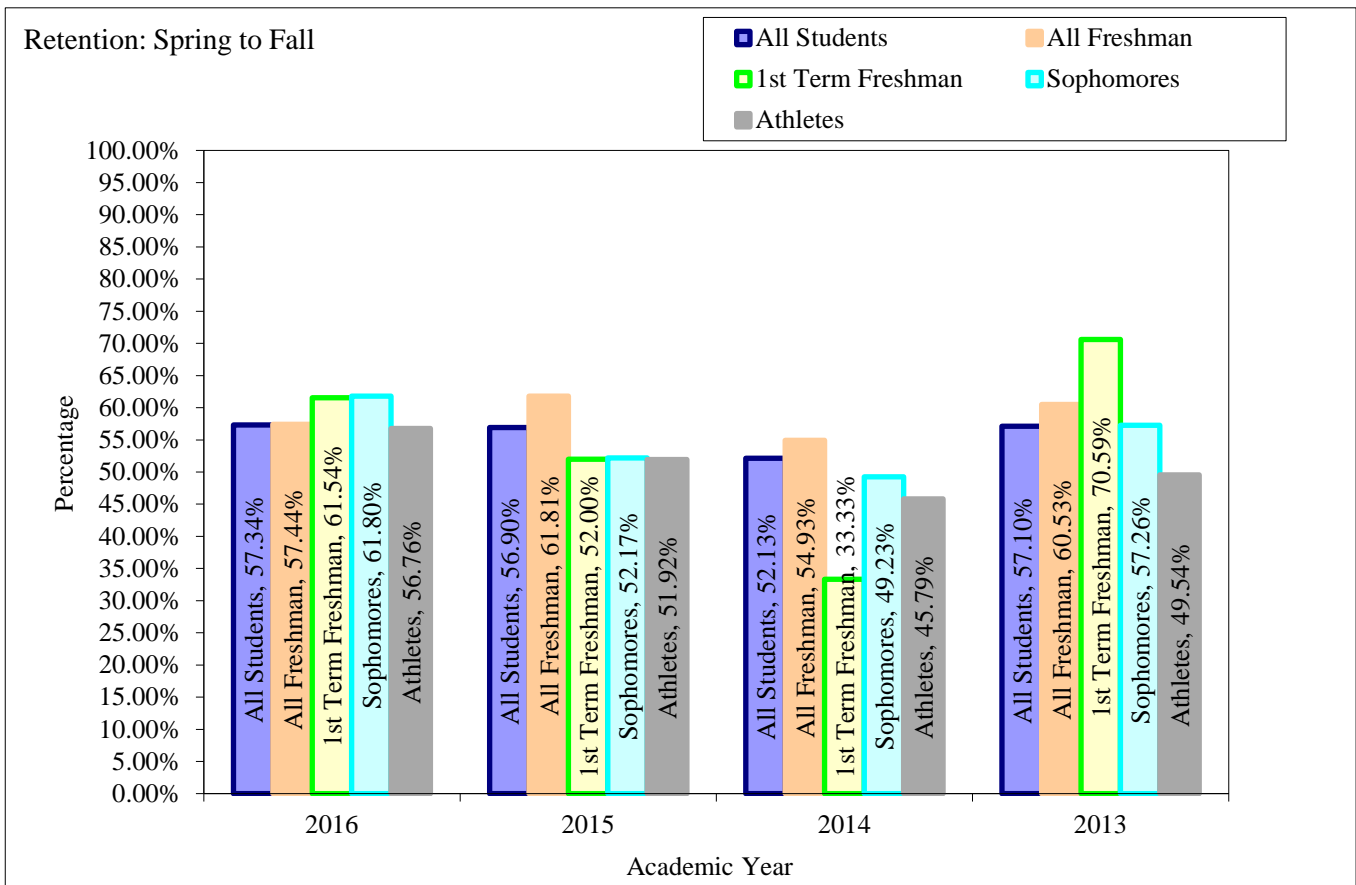
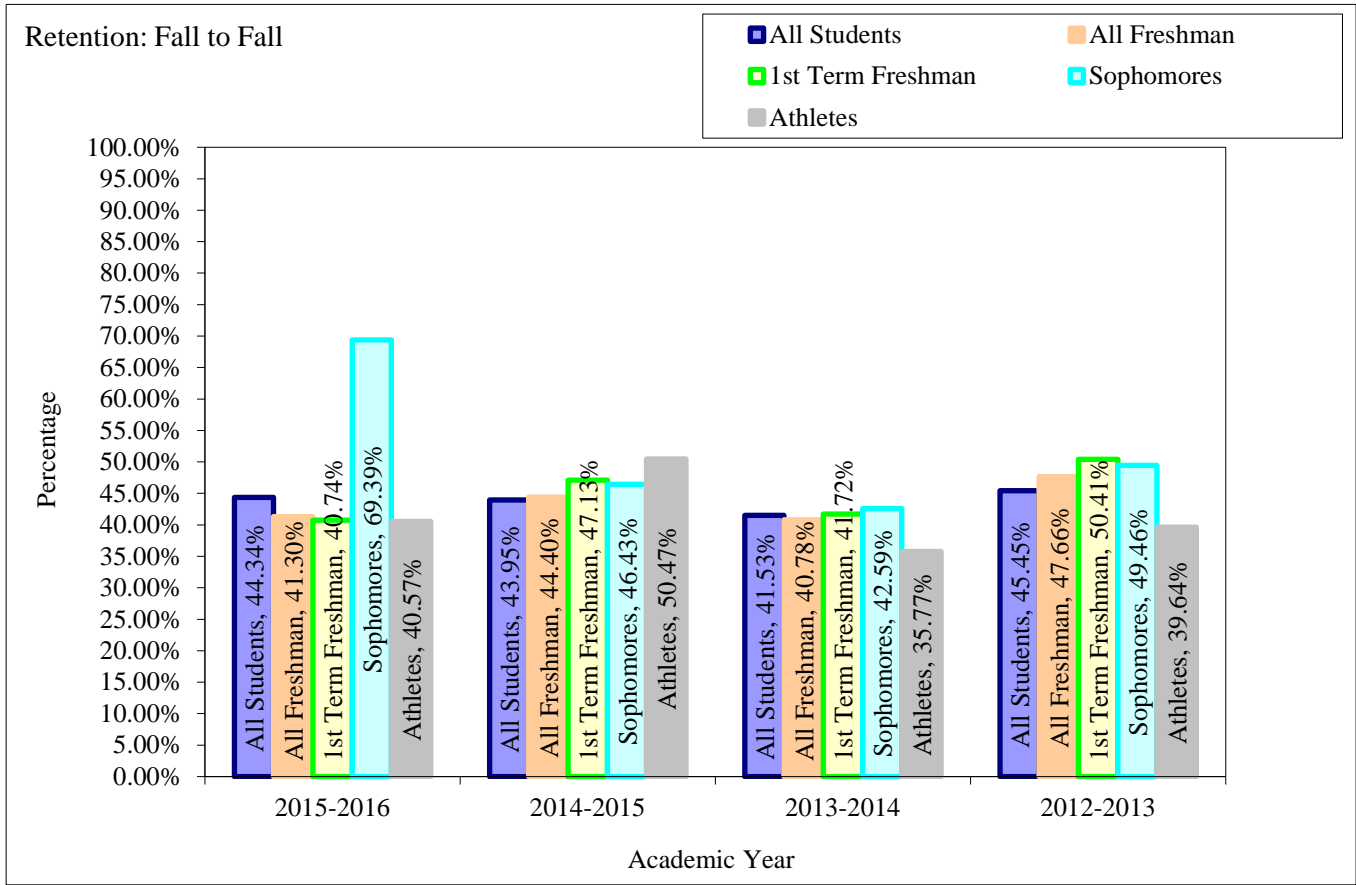
Fall 2016	Previous Fall Sophomore Headcount (less Grads)	Headcount Enrolled for Fall (incl. Grad Appl)	%
2015-2016	49	34	69.39%
2014-2015	56	26	46.43%
2013-2014	54	23	42.59%
2012-2013	93	46	49.46%
2011-2012	96	53	55.21%
2010-2011	89	49	55.06%
2009-2010	88	50	56.82%
2008-2009	68	44	64.71%
2007-2008	85	41	48.24%
2006-2007	91	61	67.03%
2005-2006	124	64	51.61%

Spring to Fall - Athletes

Fall	Previous Spring Athlete Headcount (less Grads)	Headcount Enrolled for Fall (incl. Grad Appl)	%
2016	148	84	56.76%
2015	104	54	51.92%
2014	107	49	45.79%
2013	109	54	49.54%
2012	92	37	40.22%
2011	115	51	44.35%
2010	107	55	51.40%
2009	114	57	50.00%
2008	132	47	35.61%
2007	78	41	52.56%
2006	102	37	36.27%

Fall to Fall - Athletes

Fall 2016	Previous Fall Athlete Headcount (less Grads)	Headcount Enrolled for Fall (incl. Grad Appl)	%
2015-2016	212	86	40.57%
2014-2015	107	54	50.47%
2013-2014	137	49	35.77%
2012-2013	111	44	39.64%
2011-2012	141	36	25.53%
2010-2011	139	49	35.25%
2009-2010	124	51	41.13%
2008-2009	125	54	43.20%
2007-2008	162	49	30.25%
2006-2007	102	40	39.22%
2005-2006	134	35	26.12%



Fall 2016 Demographics

Faculty FTE	
Fall 2011 - 20121	30.60
Fall 2012 - 20131	31.88
Fall 2013 - 20141	27.93
Fall 2014 - 20151	27.07
Fall 2015 - 20161	30.67
Fall 2016 - 20171	37.27

Num. of Sections Offered	
Fall 2011 - 20121	126
Fall 2012 - 20131	129
Fall 2013 - 20141	134
Fall 2014 - 20151	134
Fall 2015 - 20161	146
Fall 2016 - 20171	189

Student FTE (at 15 credits)	
Fall 2011 - 20121	395.60
Fall 2012 - 20131	326.73
Fall 2013 - 20141	326.73
Fall 2014 - 20151	321.47
Fall 2015 - 20161	417.40
Fall 2016 - 20171	505.53

Num. of Web Assisted Courses	
Fall 2011 - 20121	53
Fall 2012 - 20131	55
Fall 2013 - 20141	66
Fall 2014 - 20151	81
Fall 2015 - 20161	102
Fall 2016 - 20171	114

Student/Faculty Ratio	
Fall 2011 - 20121	14.23 : 1
Fall 2012-20131*	10.20 : 1
Fall 2013 - 20141	11.70 : 1
Fall 2014 - 20151	11.88 : 1
Fall 2015 - 20161	13.61 : 1
Fall 2016 - 20171	13.57:1

Num. of Online Courses	
Fall 2011 - 20121	9
Fall 2012 - 20131	14
Fall 2013 - 20141	17
Fall 2014 - 20151	15
Fall 2015 - 20161	24
Fall 2016 - 20171	36

*See Note - Index Page

Average Student Load	
Fall 2011 - 20121	11.13
Fall 2012 - 20131	11.11
Fall 2013 - 20141	11.56
Fall 2014 - 20151	12.06
Fall 2015 - 20161	12.42
Fall 2016 - 20171	13.03

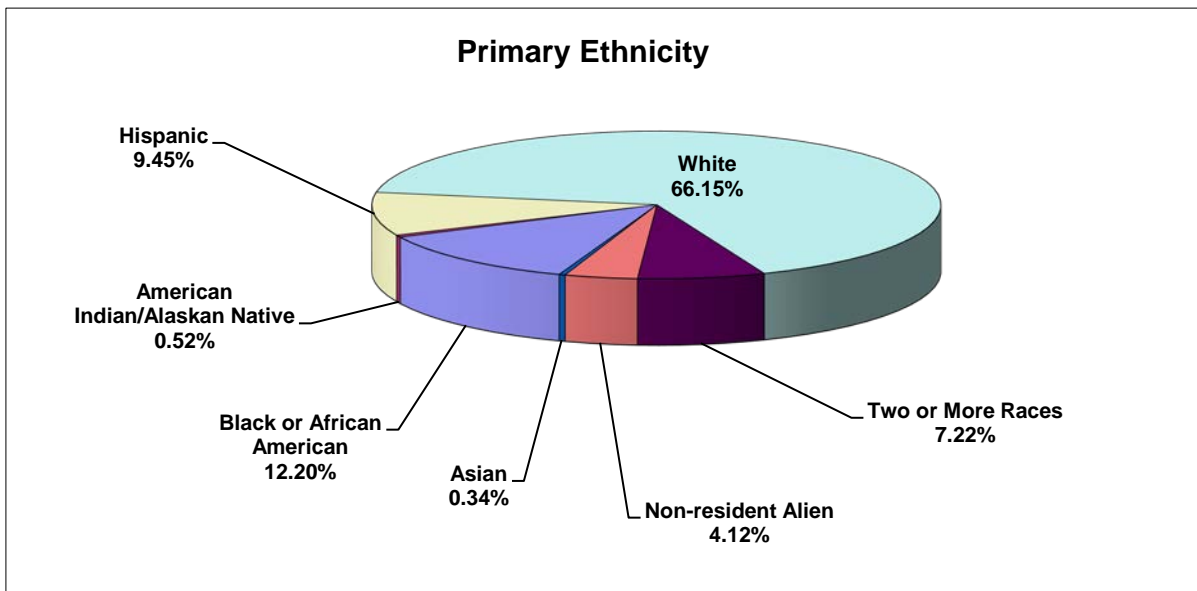
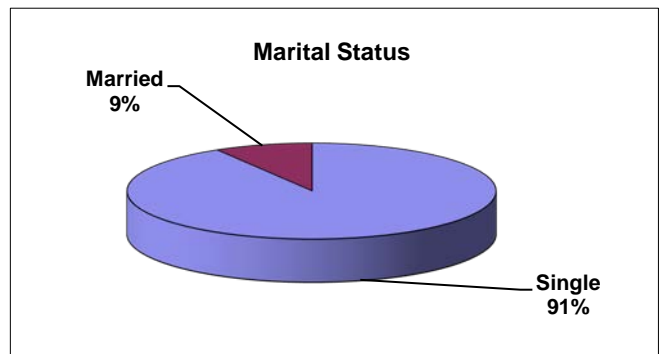
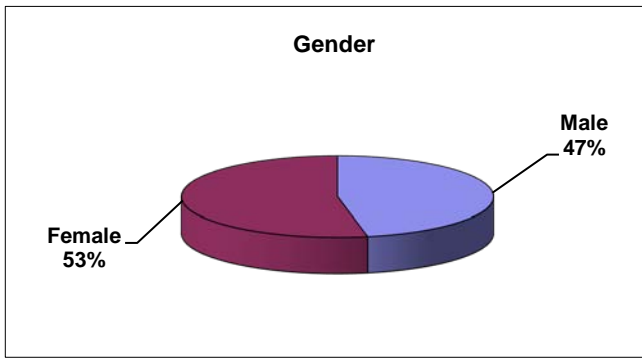
Num. of Hybrid Courses	
Fall 2011 - 20121	NA
Fall 2012 - 20131	NA
Fall 2013 - 20141	NA
Fall 2014 - 20151	NA
Fall 2015 - 20161	NA
Fall 2016 - 20171	13

Demographic Data

Gender	Count	Credits	Percent
Male	273	3684	46.91%
Female	309	3854	53.09%
	582	7538	100%

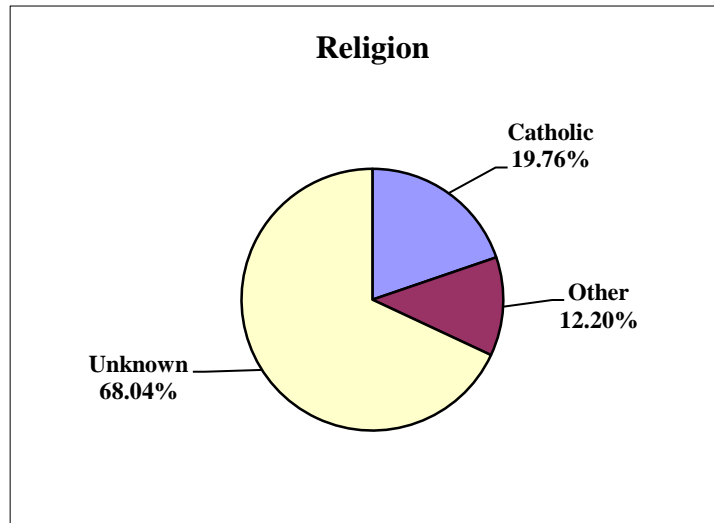
Marital Status	Count	Credits	Percent
Single	532	7020	91.41%
Married	50	518	8.59%
	582	7538	100%

Primary Ethnicity	Count	Percent
Black or African American	71	12.20%
American Indian/Alaskan Native	3	0.52%
Hispanic	55	9.45%
White	385	66.15%
Two or More Races	42	7.22%
Non-resident Alien	24	4.12%
Asian	2	0.34%
	582	100.00%

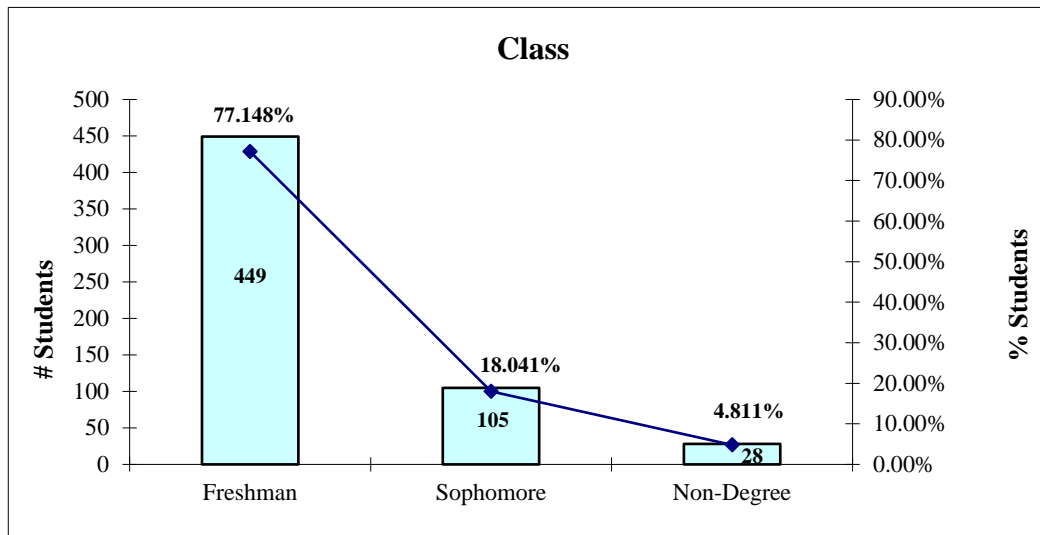


Demographic Data

Religion	
	Count
Baptist	5
Bretheran	0
Catholic	115
Christian	28
Lutheran	6
Methodist	3
Muslim	1
Non-Catholic	23
Non-Denominational	3
Pentecostal	0
Protestant	1
Unknown Religion	396
Wesleyan	1
Total	582



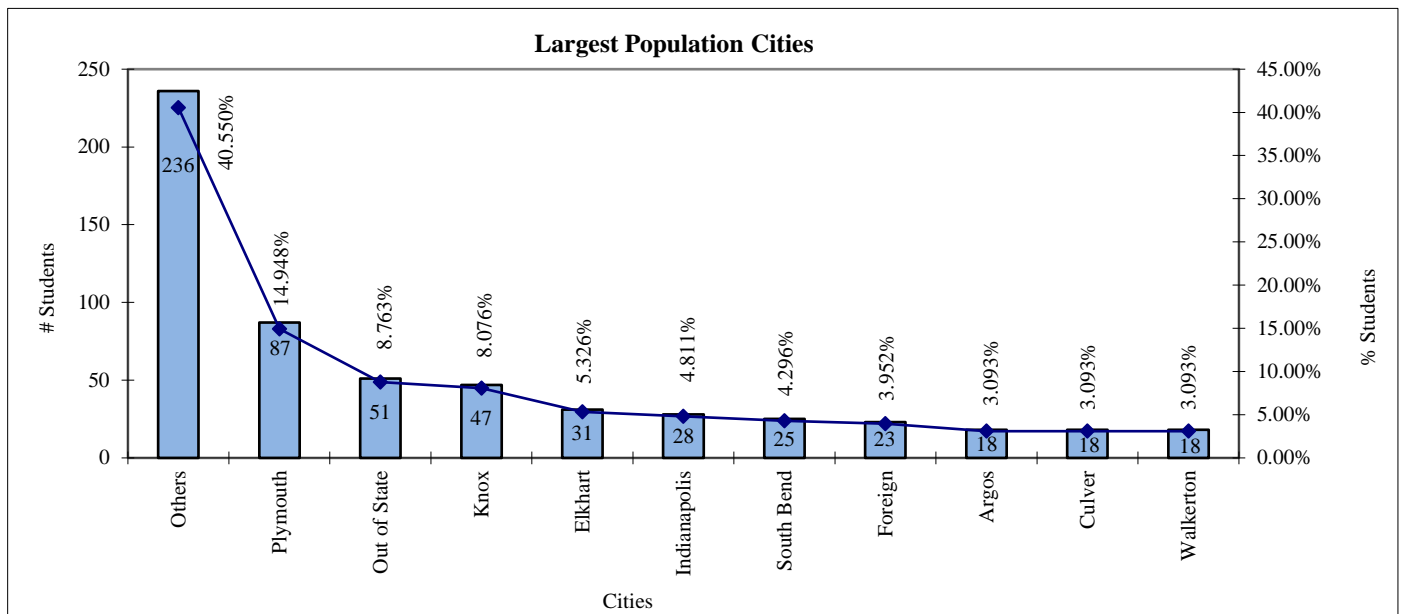
Religion		
Catholic	115	19.76%
Other	71	12.20%
Unknown	396	68.04%
Total	582	100%



Entry Code	Class			Total	Percent
	Freshman	Sophomore	Non-Degree		
New	271	0	0	271	46.56%
Re-entry	10	8	0	18	3.09%
Early Bird	0	0	11	11	1.89%
Guest	0	0	0	0	0.00%
Transfer	58	5	0	63	10.82%
WBIY	1	0	0	1	0.17%
Dual Credit	0	0	16	16	2.75%
Audit	0	0	1	1	0.17%
Continuing	109	92	0	201	34.54%
Total	449	105	28	582	100.00%
Percent	77.148%	18.041%	4.811%		

Demographic Data: Headcount by City of Permanent Residence

City	Count	City	Count	City	Count	City	Count		
Akron	3	Goshen	8	Montezuma	1	Tyner	1		
Angola	1	Granger	3	Monticello	1	Union Mills	4		
Argos	18	Greenwood	2	Muncie	1	Valparaiso	4		
Avon	1	Griffith	1	Nappanee	1	Van Buren	1		
Bloomfield	2	Grovertown	4	New Carlisle	2	Wabash	3		
Bourbon	6	Hamlet	2	New Castle	1	Walkerton	18		
Bremen	12	Hammond	2	New Palestine	1	Warsaw	3		
Bristol	1	Hartford City	1	New Paris	1	Westfield	2		
Brook	1	Hebron	1	New Whiteland	1	Westville	3		
Brownsburg	1	Hudson	1	Newburgh	1	Wheatfield	1		
Carmel	1	Indianapolis	28	Noblesville	2	Whitestown	1		
Cedar Lake	1	Jeffersonville	1	North Judson	14	Winamac	10		
Chesterton	2	Kewanna	1	North Liberty	8	Foreign	23		
Claypool	1	Kingsbury	1	North Vernon	1	Out of State	51		
Columbus	2	Kingsford Height	1	Osceola	2	Total Count	582		
Crown Point	2	Knox	47	Ossian	1	Largest Population by City			
Culver	18	Kokomo	3	Peru	1				
Danville	1	LaPorte	6	Plymouth	87				
Decatur	1	Lafayette	1	Portage	2				
Demotte	1	Lakeville	4	Rensselaer	2				
Denver	1	Lawrenceburg	1	Richmond	1				
Donaldson	2	Ligonier	1	Rochester	14				
East Chicago	3	Logansport	1	Rossville	2				
Elkhart	31	Marion	1	San Pierre	1				
Etna Green	1	Mentone	1	Schererville	2				
Evansville	2	Merrillville	4	Shipshewana	1				
Fort Wayne	4	Michigan City	6	Silver Lake	1				
Fransessville	1	Middlebury	2	South Bend	25				
Frankfort	1	Mill Creek	1	Syracuse	1				
Franklin	1	Mishawaka	1	Tippecanoe	2				
Fulton	1	Monon	1	Tipton	1				
Gary	4	Monroeville	1	Topeka	2				
Gas City	2	Monterey	3	Twelve Mile	1				
							Totals	582	100%

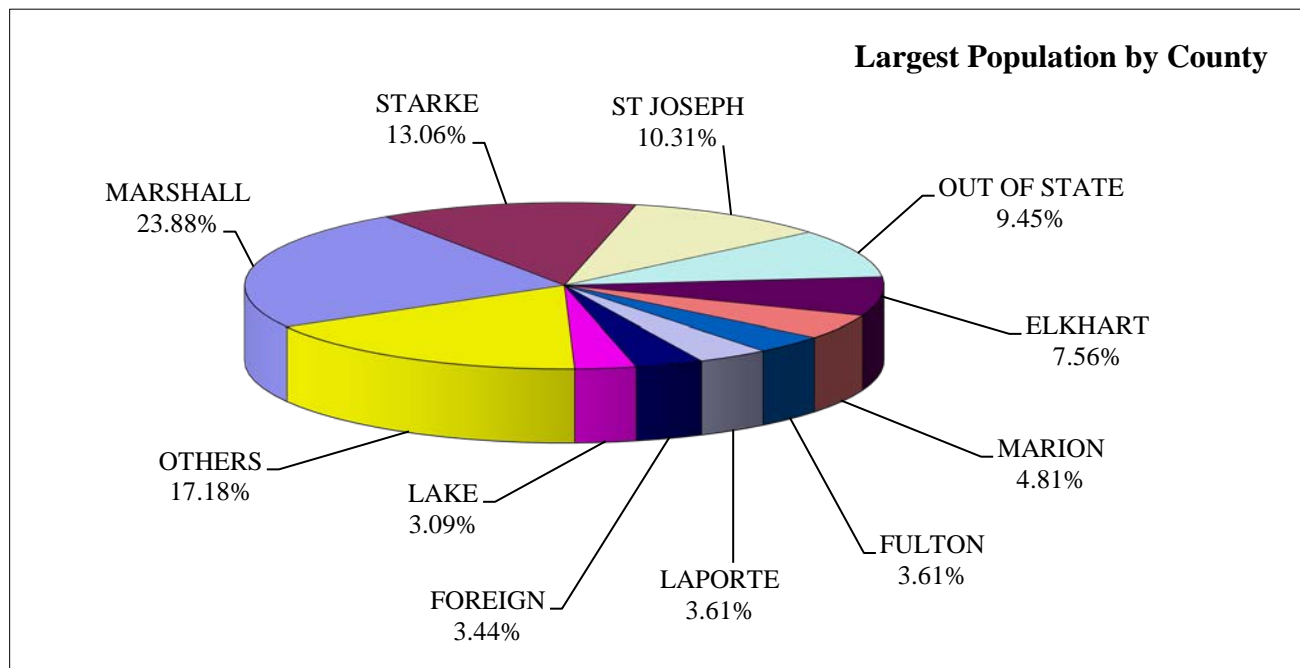


Demographic Data: Headcount by County of Original Residence

Counties	Count
ADAMS	1
ALLEN	5
BARTHOLOMEW	2
BLACKFORD	1
BOONE	1
CASS	1
CLARK	1
CLINTON	3
DEARBORN	1
DELAWARE	1
ELKHART	44
FOREIGN	20
FULTON	21
GRANT	4
GREENE	2
HAMILTON	5
HANCOCK	1
HENDRICKS	2
HENRY	1
HOWARD	3
JASPER	4
JENNINGS	1
JOHNSON	5
KOSCIUSKO	7
LAGRANGE	3
LAKE	18
LAPORTE	21
MARION	28
MARSHALL	139
MIAMI	3
NOBLE	2

Counties	Count
OUT OF STATE	55
PARKE	1
PORTER	12
PULASKI	12
RIPLEY	1
ST JOSEPH	60
STARKE	76
STEUBEN	2
TIPPECANOE	2
TIPTON	1
VANDEBURGH	2
WABASH	2
WARRICK	1
WAYNE	1
WELLS	1
WHITE	2
Total	582

Largest Population by County		
MARSHALL	139	23.88%
STARKE	76	13.06%
ST JOSEPH	60	10.31%
OUT OF STATE	55	9.45%
ELKHART	44	7.56%
MARION	28	4.81%
FULTON	21	3.61%
LAPORTE	21	3.61%
FOREIGN	20	3.44%
LAKE	18	3.09%
OTHERS	100	17.18%
Total	582	100%



Demographic Data

Country of Birth

Birth Country	Count
Aruba	1
Australia	4
Canada	2
Chile	1
Cape Verde	4
Ecuador	4
Ghana	1
Honduras	2
Haiti	1
Jamaica	1
Liberia	2
Mexico	10
Nigeria	2
Panama	1
Philippines	1
Puerto Rico	1
Romania	1
Senegal	1
United Kingdom	5
United States	533
Vietnam	4
Total	582

Country of Citizenship

Citizenship Country	Count
Aruba	1
Australia	4
Canada	2
Chile	1
Ecuador	4
Haiti	1
Jamaica	1
Mexico	8
Panama	1
Philippines	1
United Kingdom	5
United States	549
Vietnam	4
Total	582

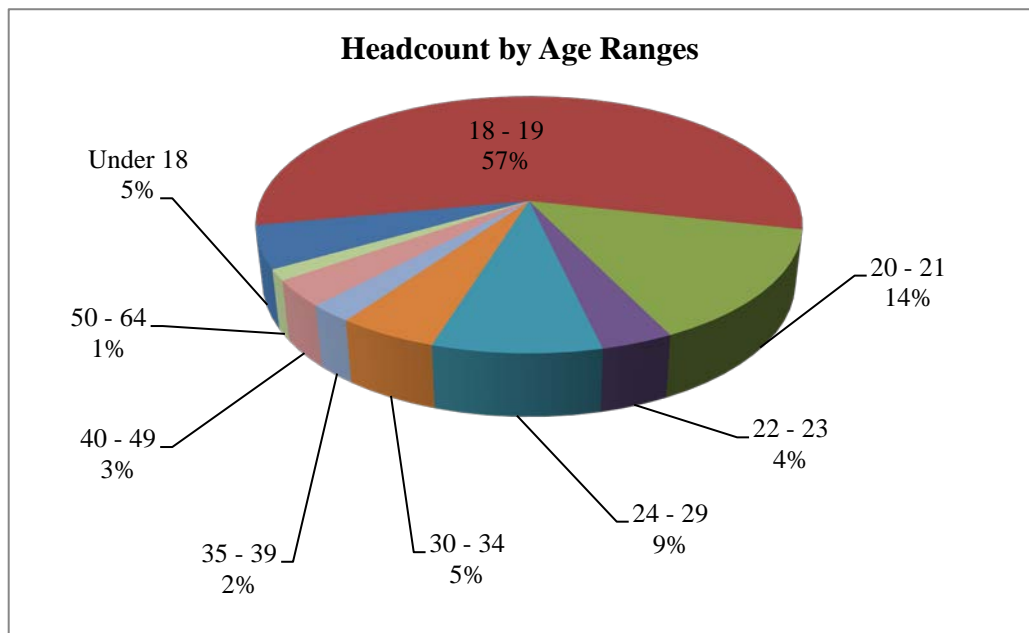
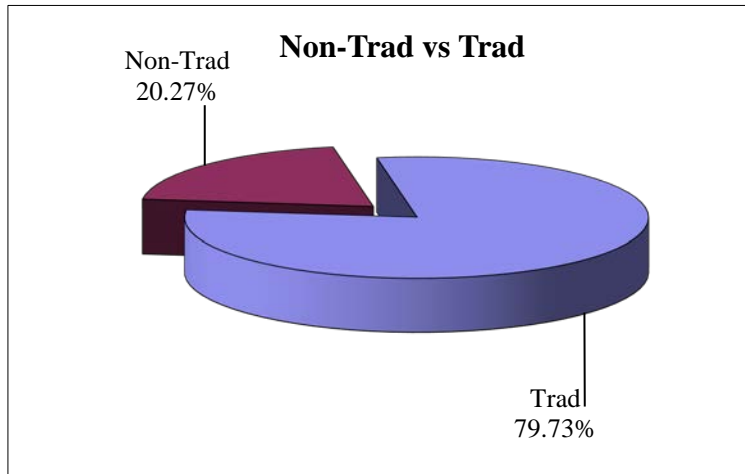
Residence Country	Count
United States	582

Demographic Data: Student Ages

Headcount by Age	
Age Range	Count
Under 18	31
18 - 19	329
20 - 21	83
22 - 23	21
24 - 29	49
30 - 34	29
35 - 39	13
40 - 49	19
50 - 64	8
Total	582

	Count	Percent	Average Age
Trad	464	79.73%	18.9
Non-Trad	118	20.27%	33.7
	582	100.00%	21.9

Average Age			
Semester & Code	All	Non-Trad	Trad
Fall 2010 - 20111	26.00	35.20	19.50
Fall 2011 - 20121	25.98	35.65	19.68
Fall 2012 - 20131	25.77	35.92	19.54
Fall 2013 - 20141	24.50	35.41	19.37
Fall 2014 - 20151	23.42	35.33	19.12
Fall 2015 - 20161	22.55	18.77	35.20
Fall 2016 - 20171	21.90	33.70	18.90



Demographic Data

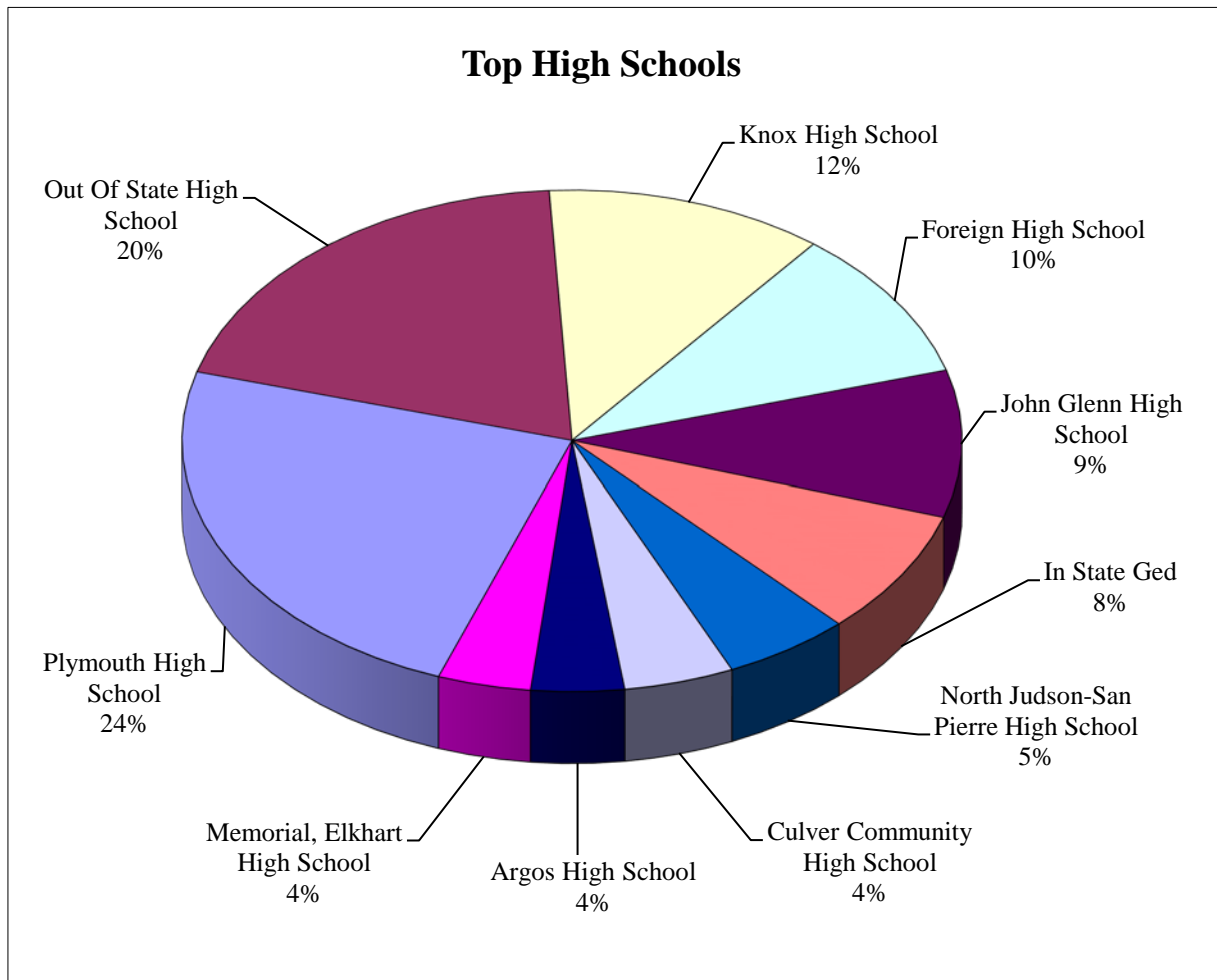
High Schools - All Ancilla Students

High Schools - All Students	Code	Count	High Schools - All Students	Code	Count
<u>High School Name</u>	<u>HS Code</u>	<u>HC</u>	<u>High School Name</u>	<u>HS Code</u>	<u>HC</u>
Angola High School	150060	1	Indian Creek High School	153485	1
Argos High School	150090	11	Indiana Connections Academy	151684	1
Arsenal Technical High School	151645	2	Jefferson High School, Lafayette	151910	1
Belmont H. S.	150770	2	Jennings County High School, N.Vernon	152655	1
Benjamin Davis High School	151650	2	Jimtown High School	150905	5
Bethany Christian High School	151312	1	John Adams High School	153260	2
Bishop Noll Inst.	151440	2	John Glenn High School	153655	27
Blackford High School	151480	1	John Marshall Community High School	151751	1
Bloomfield High School	150205	1	Kankakee Valley High School	153780	1
Boone Grove High School	150245	1	Knox High School	151870	33
Bosse, Benjamin High School	150950	1	Kokomo High School, Kokomo, In	151875	2
Bremen High School	150290	10	Lacrosse High School	151895	1
Calument High School Gary In	151230	1	Lake Central High School	153112	2
Carmel High School	150445	2	Lakeland High School	151955	1
Castle High School	152515	1	Laporte High School	151990	9
Caston High School	151210	4	Laville High School	151970	7
Center Grove High School	151390	2	Lawrence Central High School	151710	2
Chesterton High School	150500	2	Lew Wallace High School	151250	1
Chrysler High School, New Castle	152533	1	Lighthouse College Prep Acad	151263	2
Clark High School, George Roge	153805	1	Logansport High School	152095	2
Clarksville High School	150535	1	Lutheran High School	151716	1
Clay High School	153275	5	Marian High School	152343	4
Columbus North High School	150610	1	Memorial, Elkhart High School	150916	11
Concord High School	150910	5	Merrillville High School	150690	2
Crossing Educational Center	151209	4	Michigan City High School	152288	4
Crown Point High School	150685	2	Milan High School	152310	1
Culver Community High School	150693	13	Mississinewa High School	151275	2
Danville High School	150740	3	Morgan Township High School	153560	1
Decatur Central High School	151670	1	Mount Vernon Hs, Fortville, In	151080	1
East Central High School	151416	1	Muncie Central High School	152475	1
East Noble High School	151815	1	Munster High School	152489	1
Eastbrook High School Marion, In	152198	1	New Haven High School	152545	1
Eastern High School - Bloomfield	150203	1	New Prairie High School	152520	2
Edinburgh High School	150885	1	New Tech At Garu Area Cc	151269	1
Elkhart Central High School	150915	10	North Hardin Christian School	182266	1
Fairfield High School	151316	2	North Judson-San Pierre High School	152625	15
Foreign High School	159995	28	North Miami High School	150803	1
Foundations Christian School	152886	3	North Newton High School, Morocco, In	152435	1
Frankfort High School	151150	1	Northridge High School	152295	2
Frontier High School	150315	1	Northrop Sr. High School, Ft Wayne, In	151104	1
Goshen High School	151315	6	Northwood High School	152495	2
Grace Baptist Christian School	152883	2	Norwell High School	152710	1
Hammond Baptist High School	151243	1	Oregon-Davis High School	151430	5
Hammond City Baptist High School	151446	1	Out Of State Ged	159998	3
Hammond High School	151445	1	Out Of State High School	159994	56
Hauser High School	151565	1	Out Of State Home School	159992	1
Heritage High School	152375	1	Penn High School	152347	4
Herron High School	151669	1	Perry Meridian High School	151724	3
Hobart High School	151545	1	Peru High School	152805	1
Horace Mann High School	151245	1	Pike High School, Indianapolis	152510	3
In State Ged	159999	23	Plymouth High School	152885	68
In State Home School	159993	9	Portage High School	150865	4

Demographic Data Continued

High Schools - All Ancilla Students

High Schools - All Students	Code	Count	High Schools - All Students	Code	Count
Prairie Heights High School	151957	1	Taylor High School	150464	1
Providence Cristo Rey Hs	151668	3	Thomas Carr Howe Academy	151760	1
Reitz High School, F.J., Evansville	150960	1	Tippecanoe Valley High School	152255	6
Rensselaer Central High School	152950	1	Tipton High School	153475	1
Richmond High School	152965	1	Traders Point Christian Acad	153797	1
Riley, James W. High School	153255	4	Triton High School	150270	9
Rise Up Academy (Bendix, Sb Alternative	153240	1	Valparaiso High School	153565	1
Riverton Parke Jr/Sr High Sch	152390	1	Wabash High School	153625	2
Rochester High School	153020	8	Warsaw Community High School	153690	2
Rossville High School	153065	2	Wawasee High School	153393	1
Seccina Memorial High School	151745	3	West Central High School	152245	2
Smith Academy For Excellence	151089	1	West Noble High School Ligonier In	152075	1
South Bend Washington High School	153280	8	West Vigo High School	153765	1
South Central High School	153530	5	Westfield Washington High School	153735	3
South Central High School, Elizabeth	150900	1	Westview High School, Topeka	153480	3
South Dearborn High School	150120	1	Westville High School	153775	4
South Side High School, Fort Wayne	151110	1	Whiteland High School	153795	2
Southport High School	151752	3	Whites High School, Wabash	153630	1
Southwood High School	153623	1	Winamac Community High School	153842	4
Total:					582



Demographic Data

High Schools - New to Ancilla Students*

School Name	Count	School Name	Count
Angola Hs	1	John Marshall Community Hs	1
Argos High School	6	Kankakee Valley High School	1
Arsenal Technical Hs	2	Knox High School	15
Belmont H. S.	1	Kokomo HS, Kokomo, In	2
Benjamin Davis High School	2	Lacrosse High School	1
Bishop Noll Inst	1	Lake Central High School	1
Blackford Hs	1	Laporte High School	4
Bloomfield Hs	1	Laville High School	4
Boone Grove High School	1	Lawrence Central High School	1
Bremen High School	2	Lew Wallace High School	1
Calument H S Gary In	1	Lighthouse College Prep Acad	1
Carmel H. S.	2	Marian High School	3
Castle High School	1	Memorial, Elkhart High School	8
Caston High School	2	Merrillville High School	2
Chesterton High School	1	Michigan City High School	2
Chrysler Hs, New Castle	1	Mississinewa High School	1
Clark High School, George Roge	1	Munster High School	1
Clay High School	3	New Haven High School	1
Columbus North High School	1	New Prairie High School	1
Concord High School	3	New Tech At Garu Area Cc	1
Crossing Educational Center	4	North Judson-San Pierre H. S.	7
Crown Point High School	2	Northridge High School	1
Culver Community High School	6	Northrop Sr. Hs, Ft Wayne, In	1
Danville High School	3	Northwood High School	2
Decatur Central High School	1	Norwell High School	1
East Central High School	1	Oregon-Davis High School	2
East Noble High School	1	Out Of State Ged	2
Eastbrook H.S. Marion, In	1	Out Of State High School	39
Eastern Hs - Bloomfield	1	Out Of State Home School	1
Edinburgh High School	1	Penn High School	4
Elkhart Central High School	3	Perry Meridian High School	3
Fairfield High School	2	Plymouth High School	40
Foreign High School	16	Portage High School	3
Frankfort High School	1	Prairie Heights High School	1
Frontier High School	1	Providence Cristo Rey Hs	3
Goshen High School	3	Reitz Hs, F.J., Evansville	1
Grace Baptist Christian School	2	Rensselaer Central High School	1
Hammond Baptist High School	1	Riley, James W. High School	3
Hammond City Baptist Hs	1	Rise Up Academy (Bendix, Sb Alternative)	1
Hammond High School	1	Riverton Parke Jr/Sr High Sch	1
Hauser High School	1	Rochester High School	6
Heritage High School	1	Rossville High School	1
Herron High School	1	Seccina Memorial High School	3
In State Ged	1	Smith Academy For Excellence	1
In State Home School	4	South Bend Washington HS	4
Indiana Connections Academy	1	South Central High School	4
Jefferson HS, Lafayette	1	South Central Hs, Elizabeth	1
Jennings County Hs, N.Vernon	1	Southport High School	2
Jimtown High School	5	Southwood High School	1
John Adams High School	1	Taylor High School	1
John Glenn High School	20	Thomas Carr Howe Academy	1

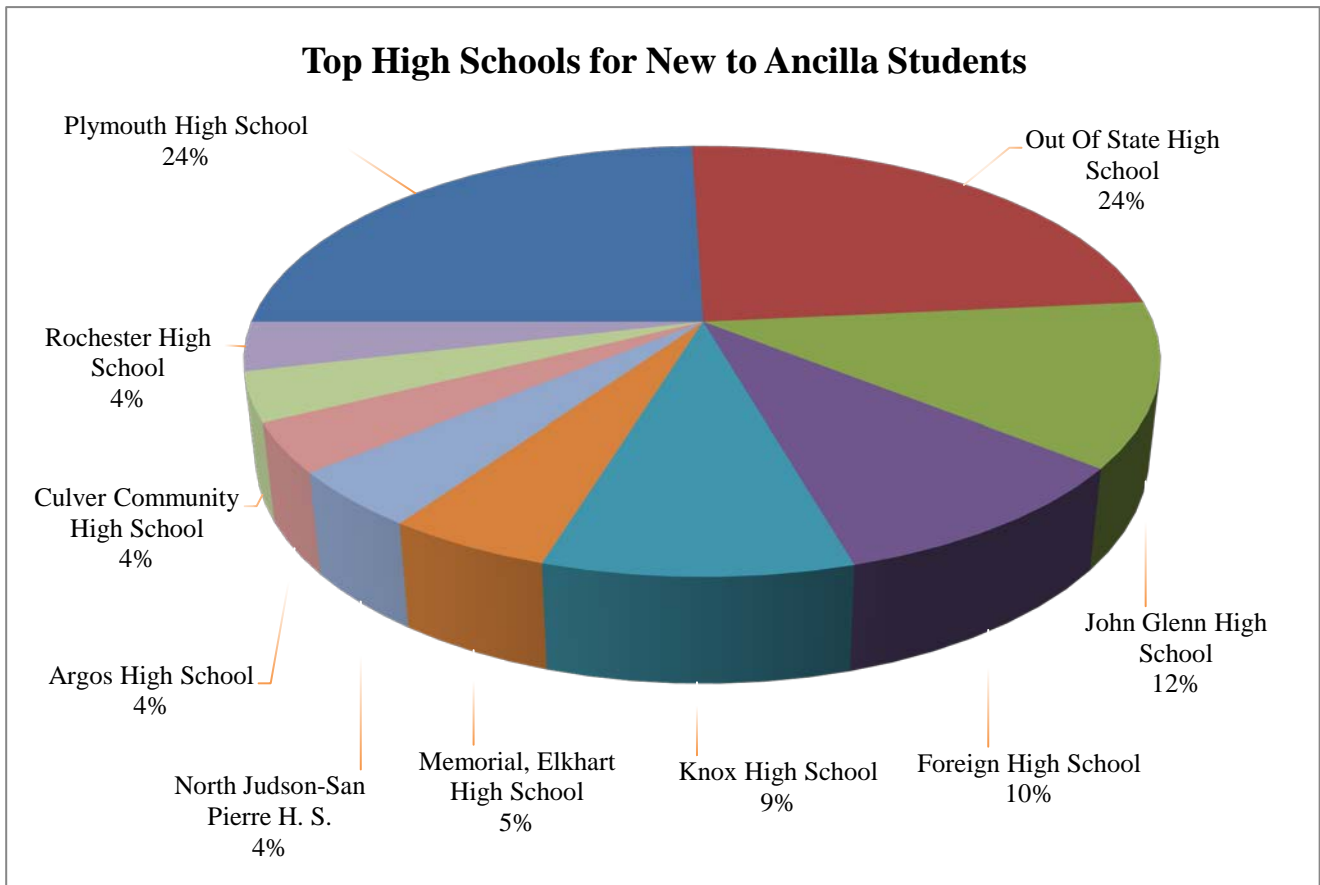
***includes: New - transfers, WBIY, guests, early birds, dual credit, or first time college students.**

Demographic Data Continued

High Schools - New to Ancilla Students*

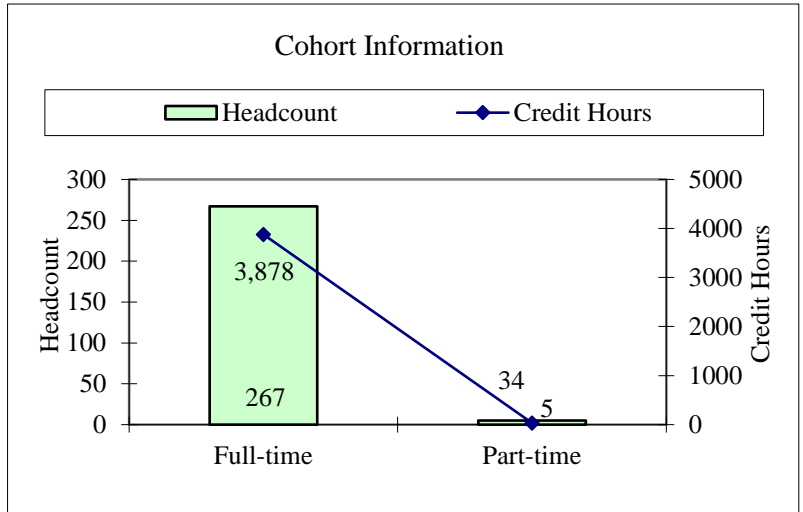
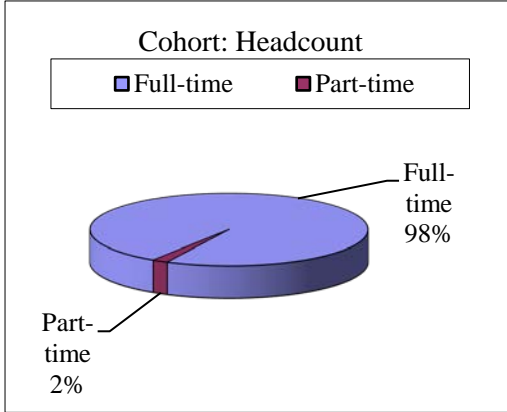
School Name	Count
Tippecanoe Valley High School	4
Tipton High School	1
Traders Point Christian Acad	1
Triton High School	4
Valparaiso High School	1
Wabash High School	2
Warsaw Community High School	2
West Central High School	2

School Name	Count
West Noble Hs Ligonier In	1
West Vigo High School	1
Westfield Washington Hs	3
Westview High School, Topeka	2
Westville H.S.	3
Whites High School, Wabash	1
Winamac Community High School	3
Total Students New to Ancilla*	348

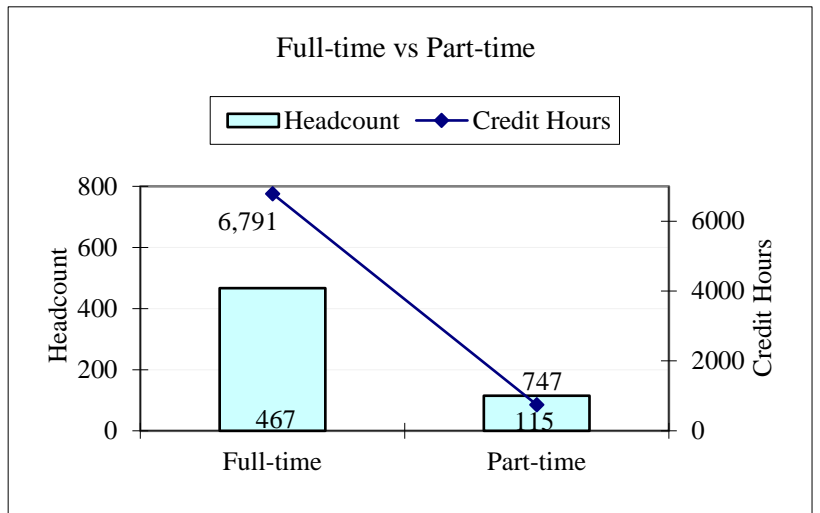
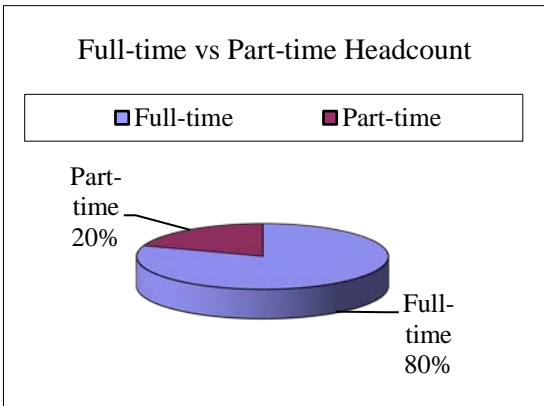


Cohort Information (First Time - Students)

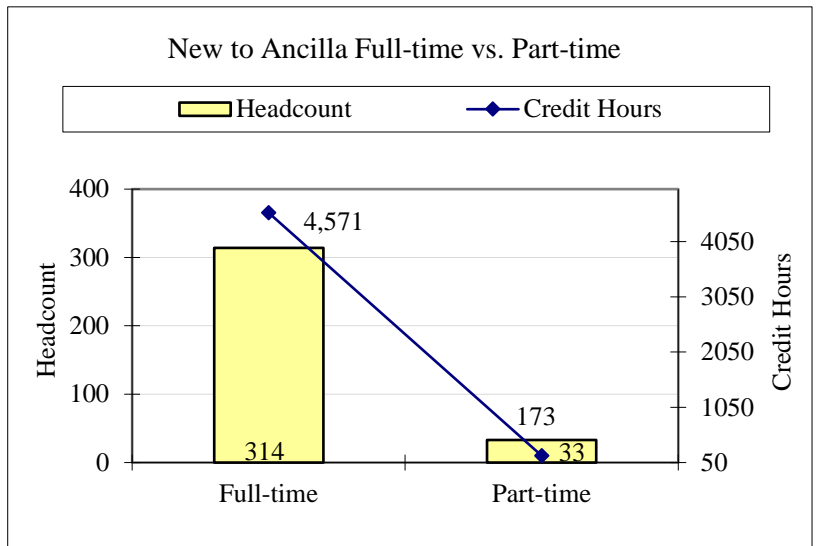
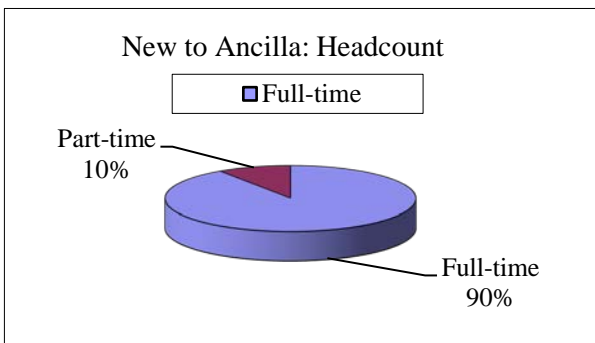
Cohort Information		
	Headcount	Credit Hours
Full-time	267	3878
Part-time	5	34
Total	272	3912



Full-time/Part-time Information		
	Headcount	Credit Hours
Full-time	467	6791
Part-time	115	747
Total	582	7538



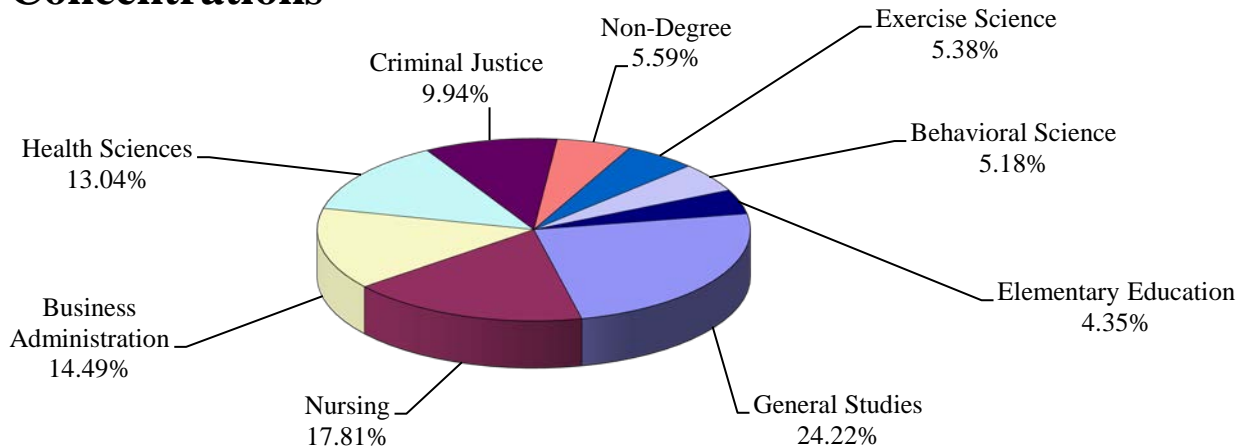
New to Ancilla Full-time vs. Part-time		
	Headcount	Credit Hours
Full-time	314	4571
Part-time	33	173
Total	347	4744



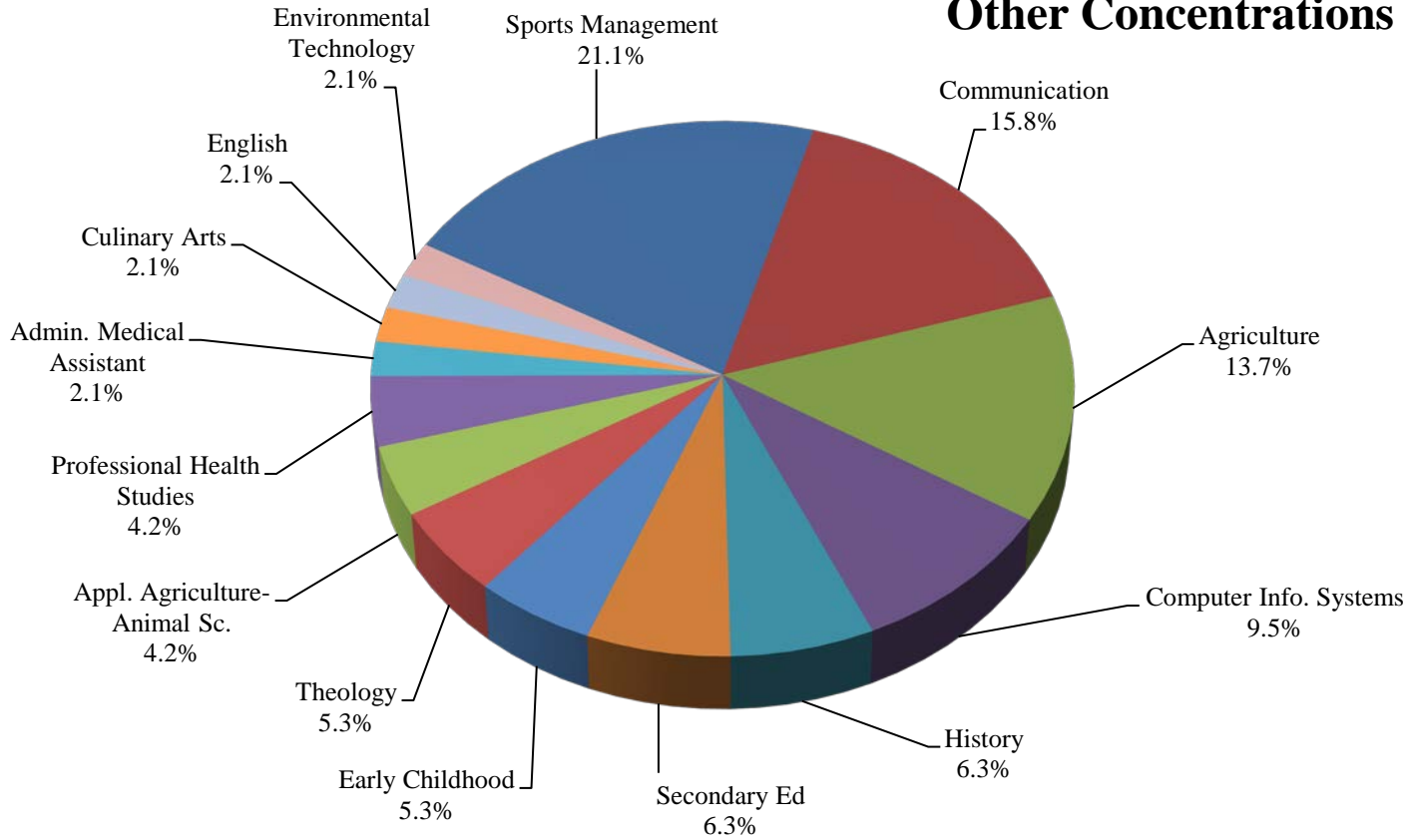
Concentration Information

Concentration	Totals	Percent	Non-Trad	Trad	Fulltime	Parttime	Freshman	Sophomore	Non-Degree
Admin. Medical Assistant	2	0.3%	1	1	2	0	2	0	0
Agriculture	13	2.2%	0	13	13	0	11	2	0
Appl. Agriculture-Animal Sc.	4	0.7%	0	4	4	0	3	1	0
Behavioral Science	25	4.3%	4	21	21	4	19	6	0
Business Administration	70	12.0%	7	63	62	8	60	10	0
Communication	15	2.6%	0	15	15	0	14	0	1
Computer Info. Systems	9	1.5%	0	9	9	0	9	0	0
Criminal Justice	48	8.2%	1	47	44	4	40	8	0
Culinary Arts	2	0.3%	0	2	2	0	2	0	0
Early Childhood	5	0.9%	0	5	5	0	5	0	0
Education	0	0.0%	0	0	0	0	0	0	0
Elementary Education	21	3.6%	3	18	19	2	20	1	0
English	2	0.3%	0	2	2	0	2	0	0
Environmental Technology	2	0.3%	0	2	2	0	2	0	0
Exercise Science	26	4.5%	1	25	26	0	23	3	0
General Studies	117	20.1%	22	95	96	21	93	24	0
Health Sciences	63	10.8%	17	46	51	12	56	7	0
History	6	1.0%	0	6	6	0	6	0	0
Hospitality & Tourism	1	0.2%	1	0	0	1	1	0	0
Logistics & Transportation	1	0.2%	0	1	1	0	1	0	0
Mass Communication	0	0.0%	0	0	0	0	0	0	0
Non-Degree	27	4.6%	1	26	0	27	0	0	27
Nursing	86	14.8%	56	30	51	35	45	41	0
Professional Health Studies	4	0.7%	0	4	4	0	4	0	0
Pursuing Degree Elsewhere	0	0.0%	0	0	0	0	0	0	0
Science	2	0.3%	0	2	1	1	2	0	0
Secondary Ed: History	0	0.0%	0	0	0	0	0	0	0
Secondary Ed	6	1.0%	0	6	6	0	6	0	0
Sports Management	20	3.4%	0	20	20	0	18	2	0
Theology	5	0.9%	4	1	5	0	5	0	0
Totals	582	100.0%	118	464	467	115	449	105	28
Credit Hours	7538		1211	6327	6791	747	6270	1156	112

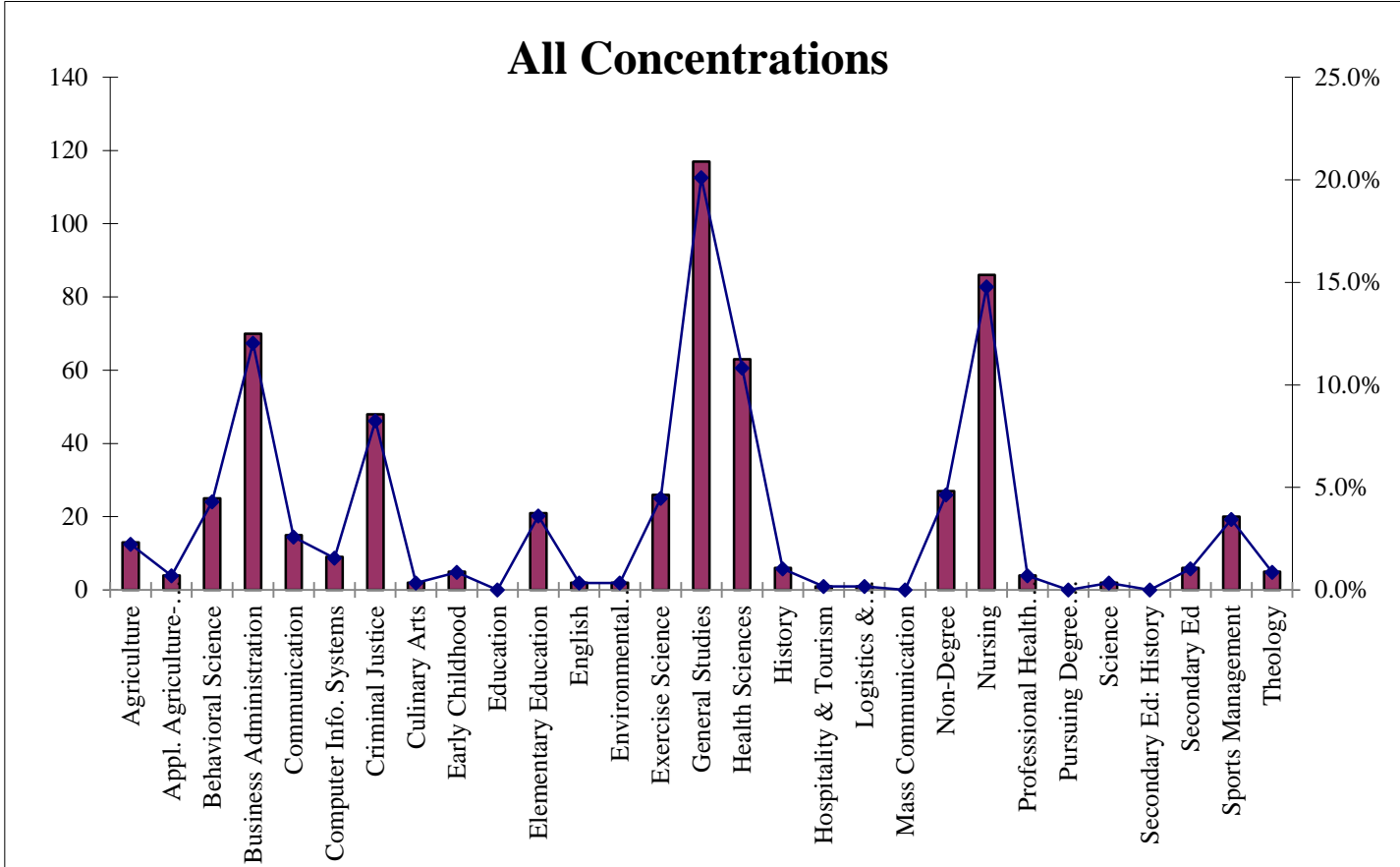
Top Concentrations



Other Concentrations



All Concentrations



Concentration Information

	New	Re-Entry	Audit	Early Bird	Guest	Transfer	WBIY	Dual Credit	Continuing	Total
Concentrations by Entry Code	1	2	3	4	5	6	7	8	0	Count
Admin. Medical Assistant	1	0	0	0	0	0	0	0	1	2
Agriculture	11	0	0	0	0	0	0	0	2	13
Appl. Agriculture-Animal Sc.	3	1	0	0	0	0	0	0	0	4
Behavioral Science	7	4	0	0	0	0	0	0	14	25
Business Administration	40	5	0	0	0	3	0	0	22	70
Communication	8	0	0	1	0	2	0	0	4	15
Computer Information Systems	7	0	0	0	0	2	0	0	0	9
Criminal Justice	33	3	0	0	0	1	0	0	11	48
Culinary Arts	2	0	0	0	0	0	0	0	0	2
Early Childhood	4	0	0	0	0	1	0	0	0	5
Elementary Education	16	0	0	0	0	1	1	0	3	21
Education	0	0	0	0	0	0	0	0	0	0
English	2	0	0	0	0	0	0	0	0	2
Environmental Technology	2	0	0	0	0	0	0	0	0	2
Exercise Science	10	1	0	0	0	6	0	0	9	26
General Studies	54	3	0	0	0	10	0	0	50	117
Health Sciences	34	4	0	0	0	9	0	0	16	63
History	5	0	0	0	0	0	0	0	1	6
Hospitality & Tourism	0	0	0	0	0	1	0	0	0	1
Logistics & Inventory Systems	1	0	0	0	0	0	0	0	0	1
Mass Communication	0	0	0	0	0	0	0	0	0	0
Non-Degree	0	0	1	10	0	0	0	16	0	27
Nursing	8	5	0	0	0	16	0	0	57	86
Professional Health Studies	1	0	0	0	0	0	0	0	3	4
Pursuing Degree Elsewhere	0	0	0	0	0	0	0	0	0	0
Science	2	0	0	0	0	0	0	0	0	2
Secondary Ed: History	0	0	0	0	0	0	0	0	0	0
Secondary Ed	4	0	0	0	0	0	0	0	2	6
Sports Management	11	1	0	0	0	2	0	0	6	20
Theology	5	0	0	0	0	0	0	0	0	5
Totals	271	27	1	11	0	54	1	16	201	582
Credit Hours	3912	264	0	64	0	756	16	48	2478	7538

Concentration Information Continued

Concentrations by Gender	Female	Percent	Male	Percent	Totals
Admin. Medical Assistant	2	0.34%	0	0.00%	2
Agriculture	7	1.20%	6	1.03%	13
Appl. Agriculture-Animal Sc.	3	0.52%	1	0.17%	4
Behavioral Science	20	3.44%	5	0.86%	25
Business Administration	14	2.41%	56	9.62%	70
Communication	4	0.69%	11	1.89%	15
Computer Information Systems	0	0.00%	9	1.55%	9
Criminal Justice	15	2.58%	33	5.67%	48
Culinary Arts	1	0.17%	1	0.17%	2
Early Childhood	5	0.86%	0	0.00%	5
Elementary Education	18	3.09%	3	0.52%	21
Education	0	0.00%	0	0.00%	0
English	1	0.17%	1	0.17%	2
Environmental Technology	0	0.00%	2	0.34%	2
Exercise Science	8	1.37%	18	3.09%	26
General Studies	50	8.59%	67	11.51%	117
Health Sciences	52	8.93%	11	1.89%	63
History	2	0.34%	4	0.69%	6
Hospitality & Tourism	1	0.17%	0	0.00%	1
Logistics & Inventory Systems	0	0.00%	1	0.17%	1
Mass Communication	0	0.00%	0	0.00%	0
Non-Degree	14	2.41%	13	2.23%	27
Nursing	80	13.75%	6	1.03%	86
Professional Health Studies	3	0.52%	1	0.17%	4
Pursuing Degree Elsewhere	0	0.00%	0	0.00%	0
Science	1	0.17%	1	0.17%	2
Secondary Ed: History	0	0.00%	0	0.00%	0
Secondary Ed	2	0.34%	4	0.69%	6
Sports Management	2	0.34%	18	3.09%	20
Theology	4	0.69%	1	0.17%	5
Totals	309	53.09%	273	46.91%	582

Concentration Information

Concentrations by Class	Freshman	Sophomore	Unclassified	Total	CIP Code
Admin. Medical Assistant	2	0	0	2	51.0716
Agriculture	11	2	0	13	01.0000
Appl. Agriculture-Animal Sc.	3	1	0	4	01.0901
Behavioral Science	19	6	0	25	30.1701
Business Administration	60	10	0	70	52.0201
Communication	14	0	1	15	09.0101
Computer Info. Systems	9	0	0	9	11.0101
Criminal Justice	40	8	0	48	43.0104
Culinary Arts	2	0	0	2	12.0599
Early Childhood	5	0	0	5	13.1210
Education	0	0	0	0	13.0101
Elementary Education	20	1	0	21	13.1202
English	2	0	0	2	23.0101
Environmental Technology	2	0	0	2	03.0103
Exercise Science	23	3	0	26	31.0505
General Studies	93	24	0	117	24.0101
Health Sciences	56	7	0	63	51.0000
History	6	0	0	6	54.0101
Hospitality & Tourism	1	0	0	1	52.0999
Logistics & Transportation	1	0	0	1	52.0203
Mass Communication	0	0	0	0	09.0102
Non-Degree	0	0	27	27	99.9999
Nursing	45	41	0	86	51.3801
Professional Health Studies	4	0	0	4	51.1199
Pursuing Degree Elsewhere	0	0	0	0	99.9999
Science	2	0	0	2	30.0101
Secondary Ed: History	0	0	0	0	13.1328
Secondary Ed	6	0	0	6	13.1205
Sports Management	18	2	0	20	52.0299
Theology	5	0	0	5	39.9999
Totals	449	105	28	582	

Traditional - NonTraditional Information

Headcount / Credit Hours					
	Count	%	Cr Hrs	%	Average
Trad	464	79.73%	6327	83.93%	13.64
NonTrad	118	20.27%	1211	16.07%	10.26
Totals	582	100.00%	7538	100.00%	12.95

Gender / Credit Hours						
	Male	%	Average	Female	%	Average
Trad	3506	46.51%	13.80	2821	37.42%	13.43
NonTrad	178	2.36%	9.37	1033	13.70%	10.43
Totals	3684	48.87%		3854	51.13%	
Average			13.49			12.47

Gender / Headcount				
	Male	%	Female	%
Trad	254	43.64%	210	36.08%
NonTrad	19	3.26%	99	17.01%
Totals	273	46.91%	309	53.09%

Full-time Headcount / Credit Hours					
	Count	%	Cr Hrs	%	Average
Trad	412	70.79%	6038	80.10%	14.66
NonTrad	55	9.45%	753	9.99%	13.69
Totals	467	80.24%	6791	90.09%	14.54

Part-time Headcount / Credit Hours					
	Count	%	Cr Hrs	%	Average
Trad	52	8.93%	289	3.83%	5.56
NonTrad	63	10.82%	458	600.00%	7.27
Totals	115	19.76%	747	9.91%	6.50

Athlete Information

Headcount/Credit Hours

	Male	Female	Total
Headcount	210	110	320
Credit Hours	3063	1636	4699

Headcount by Class/Gender

	Male	Female	Total
Freshman	198	100	298
Sophomore	12	10	22
Total	210	110	320

Credit Hours Class/Gender

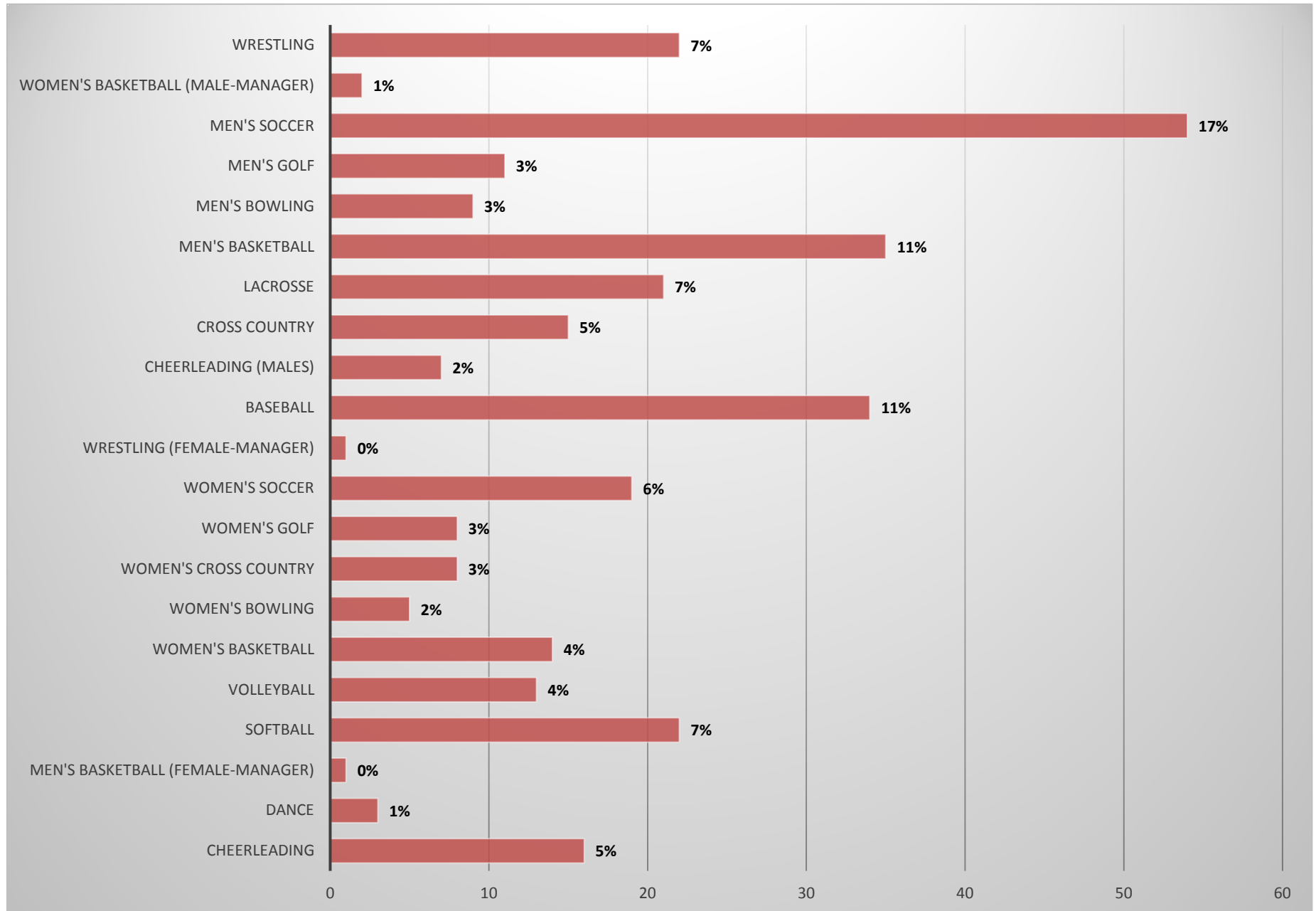
	Male	Female	Total
Freshman	2897	1485	4382
Sophomore	166	151	317
Total	3063	1636	4699

Percent of Total Student Population

	Headcount	Cr. Hrs
Total Population	582	7583
% Athletes	55%	62%

**Some athletes may participate in multiple sports*

Athlete Information Continued



Nursing Information

Credit Hours / Headcount

	Male	Female	Total
Headcount	6	80	86
Credit Hours	65	937	1002

Headcount by Class/Gender

	Male	Female	Total
Freshman	1	44	45
Sophomore	5	36	41
Total	6	80	86

Credit Hours by Class/Gender

	Male	Female	Total
Freshman	10	572	582
Sophomore	55	365	420
Total	65	937	1002

Percent of Student Population

	Count	Cr. Hrs
Total Population	582	7538
% Nursing	14.78%	13.29%

Headcount by Class and Entry Code

Original Student Entry Code	Freshman	Sophomore	Totals	
			Count	Percent
New	8	0	8	9.30%
Re-entry	2	3	5	5.81%
Guest	0	0	0	0.00%
Transfer	15	1	16	18.60%
Continuing	20	37	57	66.28%
Total	45	41	86	100%
Percent	52.33%	47.67%		

1st Generation Information

Credit Hours / Headcount

1st Generation New to Ancilla	Male	Female	Total
Headcount	61	68	129
Credit Hours	877	943	1820

2016 Fall All New to Ancilla Students

	Headcount	Cr. Hrs
Freshman Class	348	4744
% 1st Generation Students	37.07%	38.36%

2016 Fall Student Population

	Headcount	Cr. Hrs
Total Population	582	7538
% 1st Generation Students	22.16%	24.14%

Additional Information

Credit Hours by Class/Gender			
	Male	Female	Total
Freshman	3292	2978	6270
Sophomore	331	825	1156
Non-Degree/Unclassified	61	51	112
Total	3684	3854	7538

Headcount by Class/Gender			
	Male	Female	Total
Freshman	230	219	449
Sophomore	29	76	105
Non-Degree/Unclassified	14	14	28
Total	273	309	582

New Non-Degree Audit Students			
	Male	Female	Total
Credit Hours**	0	0	0
Headcount	0	1	1

New Early Bird Students			
	Male	Female	Total
Credit Hours	13	18	31
Headcount	2	4	6

New Guest Students			
	Male	Female	Total
Credit Hours	0	0	0
Headcount	0	0	0

New Dual Credit Students			
	Male	Female	Total
Credit Hours	30	15	45
Headcount	10	5	15

**Credit Hours of Audit Courses are not included in official counts