

Enrollment Report

Office of the Registrar

Fall 2020
20211

October 2020

Index

Age	15	Faculty FTE	9
Athlete - Information	27-28	First Generation - Information	30
Average Age	15	Full-time vs Part-time	26
Average Student Load	9	Gender	10
City	12	High School - All Students	16-17
Class by Entry Code	11	High School - New to Ancilla	18-19
Cohort - First Time - Full-time	20	Hybrid Courses - Offered	9
Cohort - First Time - Part-time	20	Marital Status	10
Cohort Info	20	New to Ancilla - FT vs PT	20
Concentration Information	21-25	Non Degree Students	31
Concentrations - All Chart	22	Number of Sections Offered	9
Concentrations - CIP Codes	25	Nursing - Information	29
Concentrations - Other - Chart	22	Online Courses - Offered	9
Concentrations - Top - Chart	21	Religion	11
Concentrations by Class	21	Retention - 1st Term Freshman	7
Concentrations by Entry Code	23	Retention - All Freshman	4
Concentrations by Full-time/PT	21	Retention - All Students	4
Concentrations by Gender	24	Retention - Athletes	7
Concentrations by Trad/Non Trad	21	Retention - Charts	4-6, 8
Country	14	Retention - Sophomores	7
County	13	Student FTE	9
Credit Hours by Class & Gender	31	Student/Faculty Ratio	9
Credit Hours by College	3	Top High School Chart	17
Entry Code	3	Web Assisted Courses - Offered	9
Ethnicity	10		

Notes:

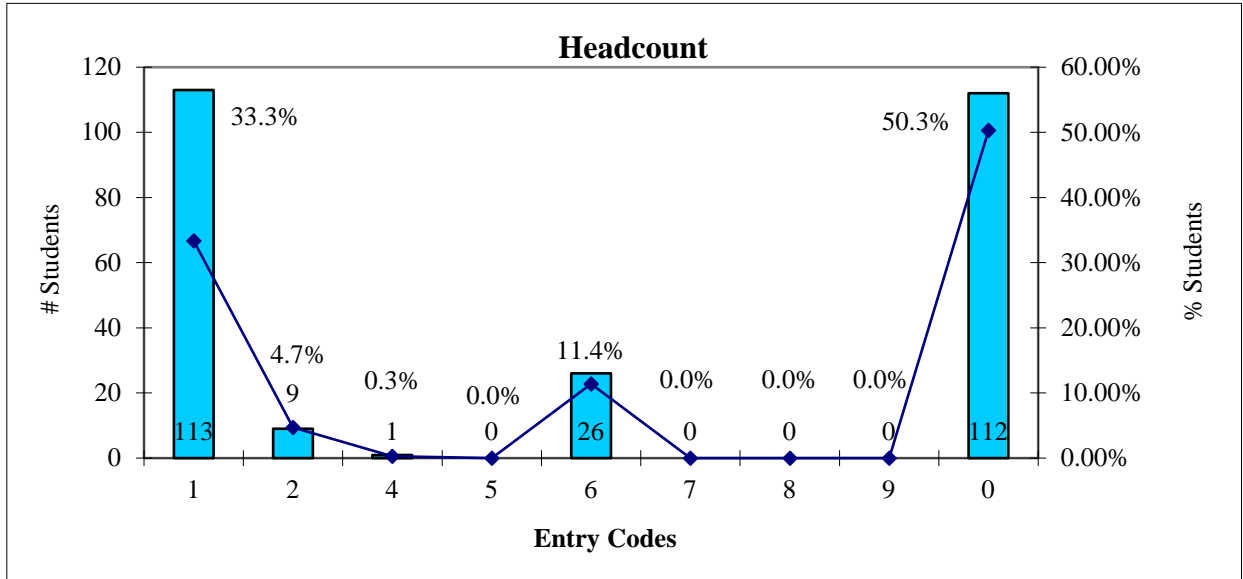
Page 7 - Student Faculty Ratio: New formula used to determine Student/ Faculty Ratio

FTE Students ÷ FTE Faculty = Student Faculty Ratio

(old formula: Total # Students ÷ FTE Faculty = Student/Faculty Ratio)

Entry Codes

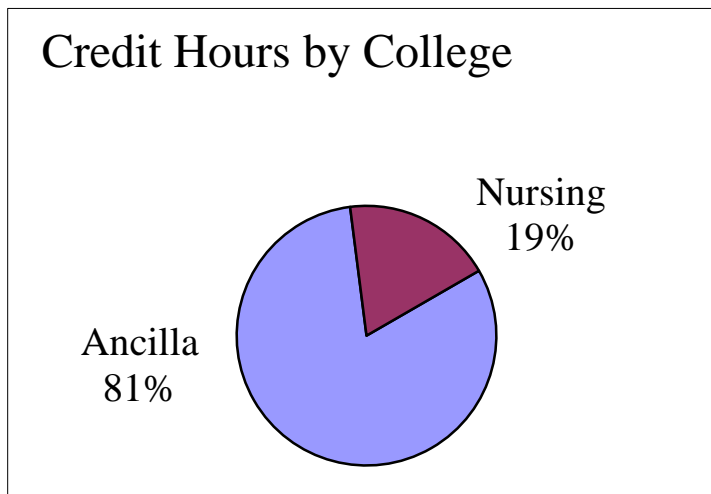
Headcount	New	Re-entry	Early Bird	Guest	Transfer	WBIY	Dual Credit	Non-Degree	Continuing	Total
	1	2	4	5	6	7	8	9	0	
Ancilla	113	9	1	0	26	0	0	0	112	261
Nursing	1	7	0	0	13	0	0	0	60	81
Total	114	16	1	0	39	0	0	0	172	342
Total Percent	33.33%	4.68%	0.29%	0.00%	11.40%	0.00%	0.00%	0.00%	50.29%	100%



Credit Hours by College	
	Credit Hours
Ancilla	3625
Nursing	833
Total	4458

Headcount	New	Re-entry	Continuing	Total
Degree Seeking	114	16	172	302
Transfer	39	0	0	39
Guest	0	0	0	0
Audit	0	0	0	0
WBIY	0	0	0	0
Early Bird	0	0	1	1
Dual Credit	0	0	0	0
153	16	173	342	

***Audit credits are not counted in the overall credit total.*



Retention Report

Spring to Fall - All

Fall	Previous Spring Headcount (less Grads)	Headcount Enrolled for Fall (incl. Grad Appl)	%
2020	270	169	62.59%
2019	266	136	51.13%
2018	352	180	51.14%
2017	369	205	55.56%
2016	361	207	57.34%
2015	290	165	56.90%
2014	305	159	52.13%
2013	331	189	57.10%
2012	387	226	58.40%
2011	443	272	61.40%
2010	463	280	60.48%

Fall to Fall - All

Fall 2020	Previous Fall Headcount (less Grads)	Headcount Enrolled for Fall (incl. Grad Appl)	%
2019-2020	295	148	50.17%
2018-2019	300	118	39.33%
2017-2018	432	158	36.57%
2016-2017	480	198	41.25%
2015-2016	424	188	44.34%
2014-2015	339	149	43.95%
2013-2014	354	147	41.53%
2012-2013	374	170	45.45%
2011-2012	442	204	46.15%
2010-2011	478	232	48.54%
2009-2010	476	238	50.00%

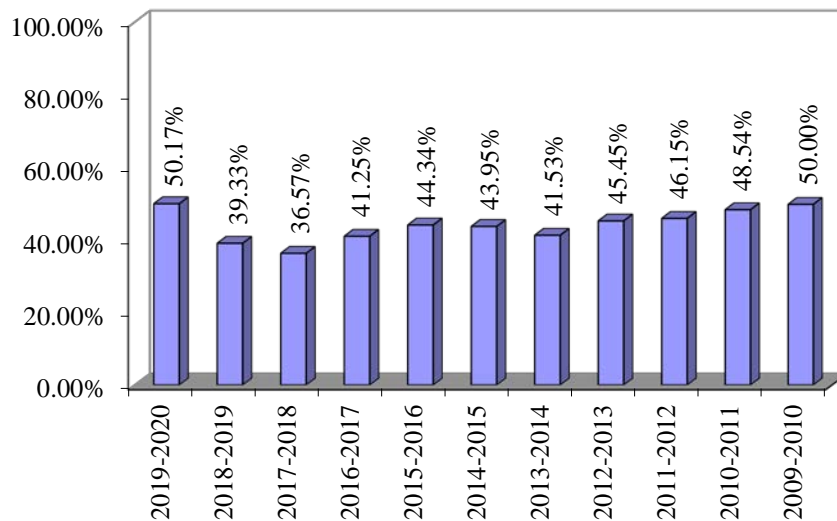
Spring to Fall - All Freshman

Fall	Previous Spring Freshman Headcount	Headcount Enrolled for Fall	%
2020	169	122	72.19%
2019	161	93	57.76%
2018	216	120	55.56%
2017	245	138	56.33%
2016	242	139	57.44%
2015	199	123	61.81%
2014	213	117	54.93%
2013	190	115	60.53%
2012	228	133	58.33%
2011	284	166	58.45%
2010	310	179	57.74%

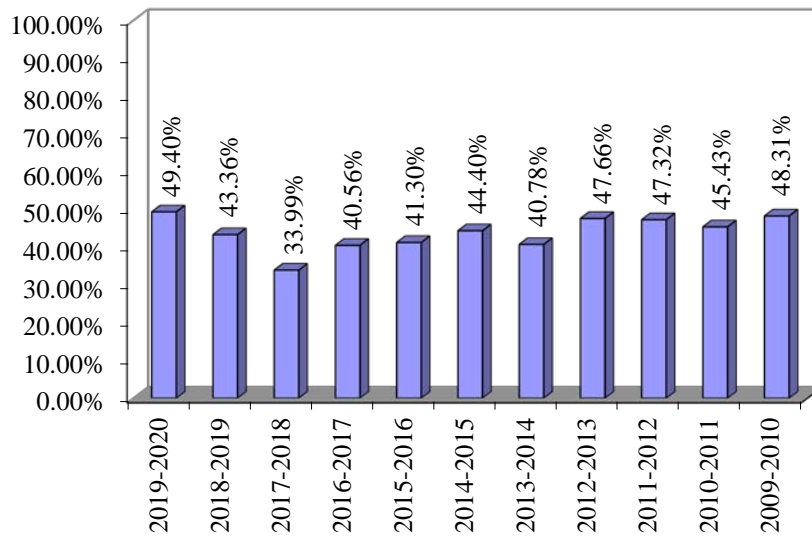
Fall to Fall - All Freshman

Fall 2020	Previous Fall Freshman Headcount	Headcount Enrolled for Fall	%
2019-2020	249	123	49.40%
2018-2019	226	98	43.36%
2017-2018	353	120	33.99%
2016-2017	392	159	40.56%
2015-2016	339	140	41.30%
2014-2015	268	119	44.40%
2013-2014	282	115	40.78%
2012-2013	256	122	47.66%
2011-2012	317	150	47.32%
2010-2011	394	179	45.43%
2009-2010	385	186	48.31%

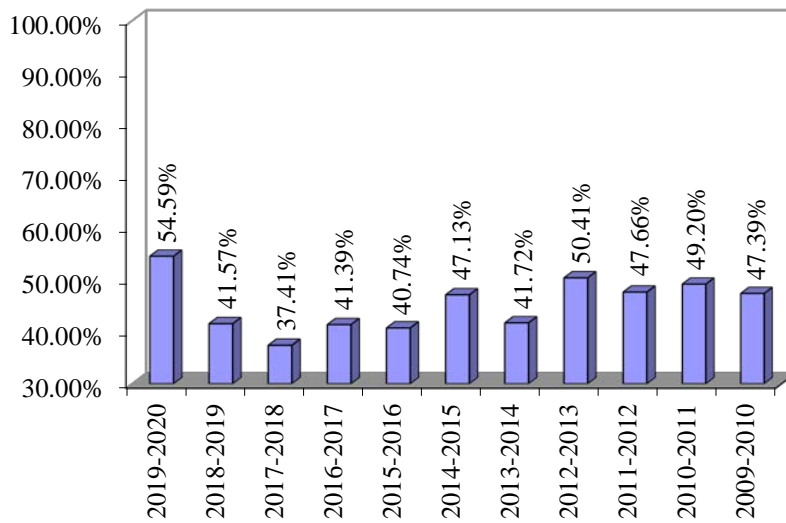
Retention - Fall to Fall - All Students



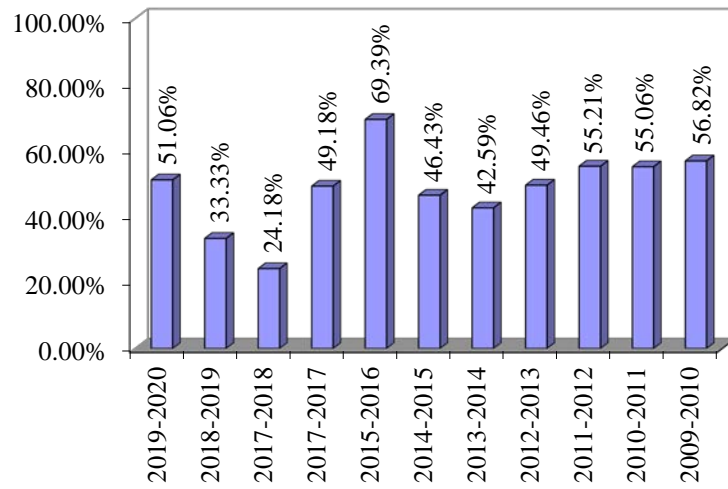
Retention - Fall to Fall - All Freshman



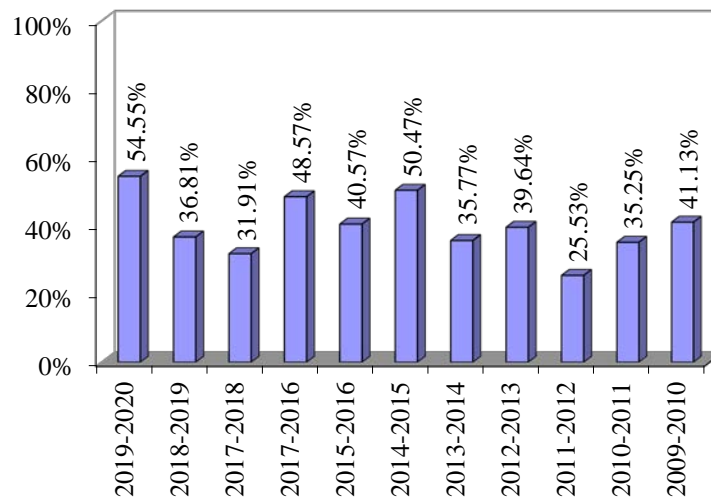
Retention - Fall to Fall - 1st Term Freshman



Retention - Fall to Fall - Sophomores



Retention - Fall to Fall - Athletes



Retention Report

Spring to Fall - 1st Term Freshman

Fall	Previous Spring 1st Term Freshman Headcount	Headcount Enrolled for Fall	%
2020	25	20	80.00%
2019	26	14	53.85%
2018	27	19	70.37%
2017	26	12	46.15%
2016	39	24	61.54%
2015	25	13	52.00%
2014	24	8	33.33%
2013	17	12	70.59%
2012	20	8	40.00%
2011	20	12	60.00%
2010	56	35	62.50%

Fall to Fall - 1st Term Freshman

Fall 2020	Previous Fall 1st Term Freshman Headcount	Headcount Enrolled for Fall	%
2019-2020	185	101	54.59%
2018-2019	166	69	41.57%
2017-2018	270	101	37.41%
2016-2017	302	125	41.39%
2015-2016	270	110	40.74%
2014-2015	174	82	47.13%
2013-2014	151	63	41.72%
2012-2013	121	61	50.41%
2011-2012	128	61	47.66%
2010-2011	187	92	49.20%
2009-2010	211	100	47.39%

Spring to Fall - Sophomores

Fall	Previous Spring Sophomore Headcount (less Grads)	Headcount Enrolled for Fall (incl. Grad Appl)	%
2020	72	45	62.50%
2019	59	32	54.24%
2018	188	98	52.13%
2017	100	58	58.00%
2016	89	55	61.80%
2015	69	36	52.17%
2014	65	32	49.23%
2013	124	71	57.26%
2012	140	89	63.57%
2011	132	89	67.42%
2010	149	100	67.11%

Fall to Fall - Sophomores

Fall 2020	Previous Fall Sophomore Headcount (less Grads)	Headcount Enrolled for Fall (incl. Grad Appl)	%
2019-2020	47	24	51.06%
2018-2019	21	7	33.33%
2017-2018	91	22	24.18%
2017-2017	61	30	49.18%
2015-2016	49	34	69.39%
2014-2015	56	26	46.43%
2013-2014	54	23	42.59%
2012-2013	93	46	49.46%
2011-2012	96	53	55.21%
2010-2011	89	49	55.06%
2009-2010	88	50	56.82%

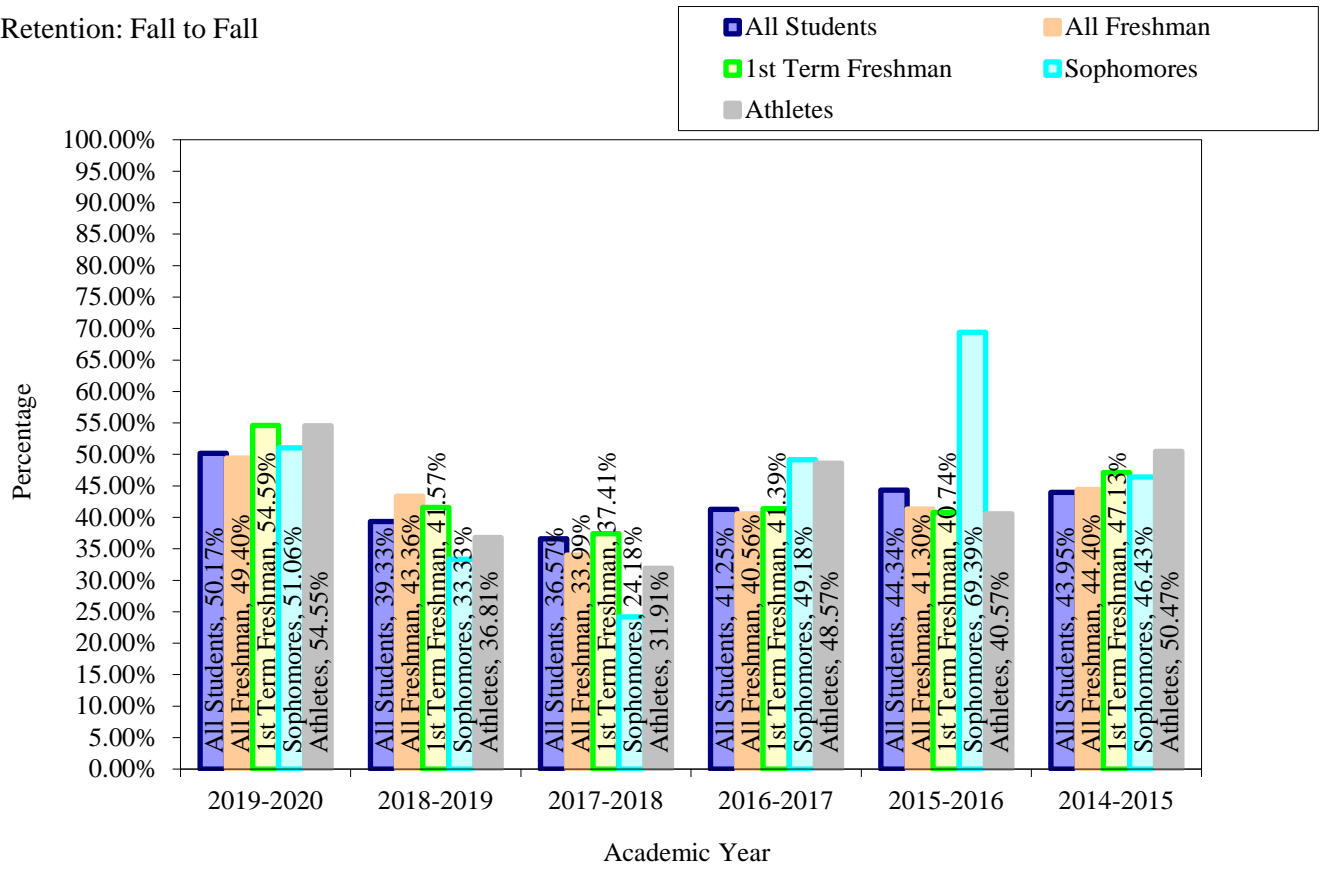
Spring to Fall - Athletes

Fall	Previous Spring Athlete Headcount (less Grads)	Headcount Enrolled for Fall (incl. Grad Appl)	%
2020	95	62	65.26%
2019	101	48	47.52%
2018	152	68	44.74%
2017	183	100	54.64%
2016	148	84	56.76%
2015	104	54	51.92%
2014	107	49	45.79%
2013	109	54	49.54%
2012	92	37	40.22%
2011	115	51	44.35%
2010	107	55	51.40%

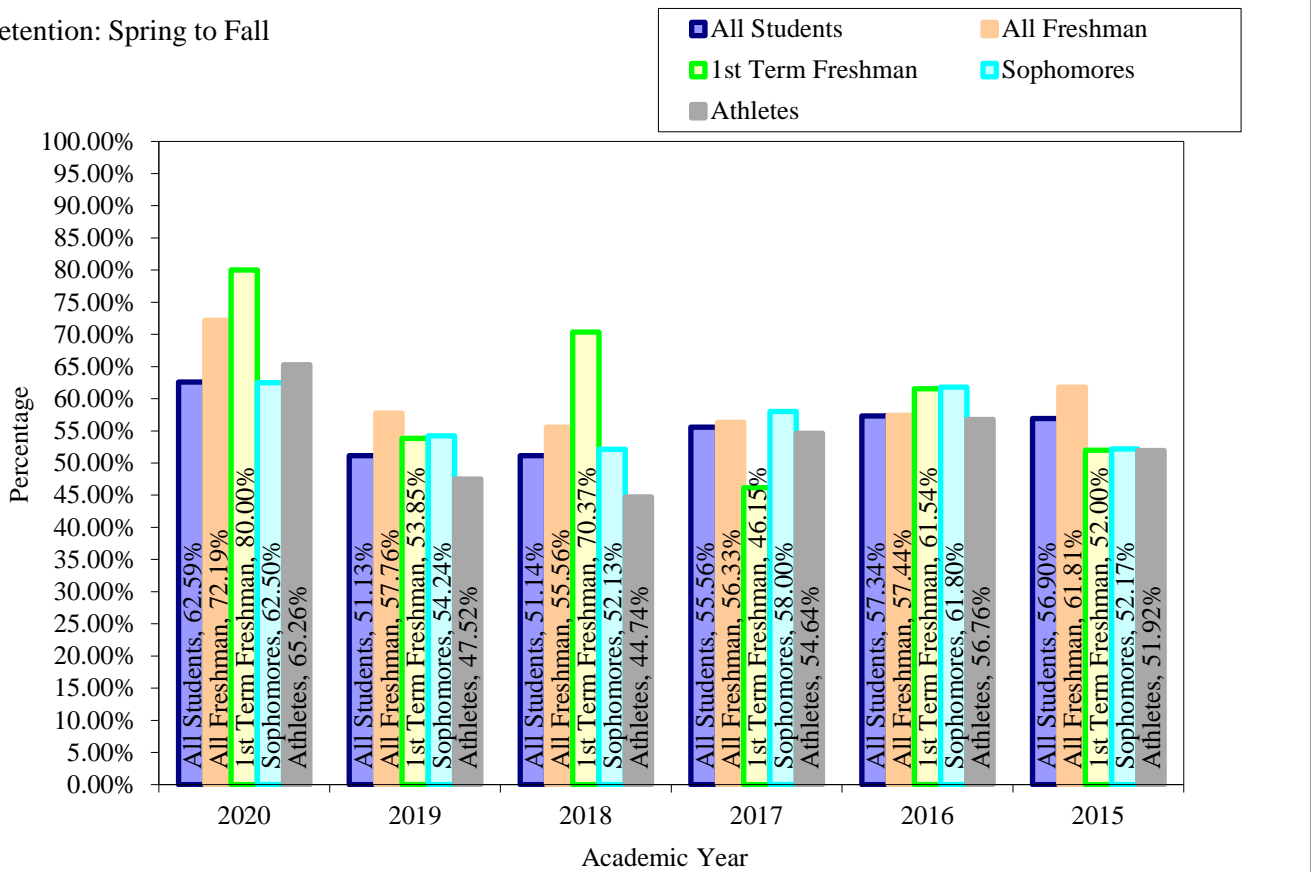
Fall to Fall - Athletes

Fall 2020	Previous Fall Athlete Headcount (less Grads)	Headcount Enrolled for Fall (incl. Grad Appl)	%
2019-2020	121	66	54.55%
2018-2019	144	53	36.81%
2017-2018	235	75	31.91%
2017-2016	210	102	48.57%
2015-2016	212	86	40.57%
2014-2015	107	54	50.47%
2013-2014	137	49	35.77%
2012-2013	111	44	39.64%
2011-2012	141	36	25.53%
2010-2011	139	49	35.25%
2009-2010	124	51	41.13%

Retention: Fall to Fall



Retention: Spring to Fall



Fall 2020 Demographics

Faculty FTE	
Fall 2015 - 20161	37.27
Fall 2016 - 20171	37.27
Fall 2017 - 20181	25.53
Fall 2018 - 20191	21.65
Fall 2019 - 20201	34.68
Fall 2020 - 20211	35.07

Num. of Sections Offered	
Fall 2015 - 20161	146
Fall 2016 - 20171	189
Fall 2017 - 20181	162
Fall 2018 - 20191	145
Fall 2019 - 20201	120
Fall 2020 - 20211	150

Student FTE (at 15 credits)	
Fall 2015 - 20161	417.40
Fall 2016 - 20171	505.53
Fall 2017 - 20181	471.80
Fall 2018 - 20191	334.80
Fall 2019 - 20201	317.13
Fall 2020 - 20211	297.20

Num. of Web Assisted Courses	
Fall 2015 - 20161	102
Fall 2016 - 20171	114
Fall 2017 - 20181	107
Fall 2018 - 20191	74
Fall 2019 - 20201	73.00
Fall 2020 - 20211	NA

Student/Faculty Ratio	
Fall 2015 - 20161	13.61 : 1
Fall 2016 - 20171	13.57 : 1
Fall 2017 - 20181	18.48 : 1
Fall 2018 - 20191	15.46 : 1
Fall 2019 - 20201	9.14 : 1
Fall 2020 - 20211	8.47 : 1

Num. of Online Courses	
Fall 2015 - 20161	24
Fall 2016 - 20171	36
Fall 2017 - 20181	33
Fall 2018 - 20191	24
Fall 2019 - 20201	23
Fall 2020 - 20211	32

**See Note - Index Page*

Average Student Load	
Fall 2015 - 20161	12.42
Fall 2016 - 20171	13.03
Fall 2017 - 20181	12.16
Fall 2018 - 20191	12.1
Fall 2019 - 20201	12.32
Fall 2020 - 20211	13.04

Num. of Hybrid Courses	
Fall 2015 - 20161	NA
Fall 2016 - 20171	13
Fall 2017 - 20181	15
Fall 2018 - 20191	19
Fall 2019 - 20201	16
Fall 2020 - 20211	91

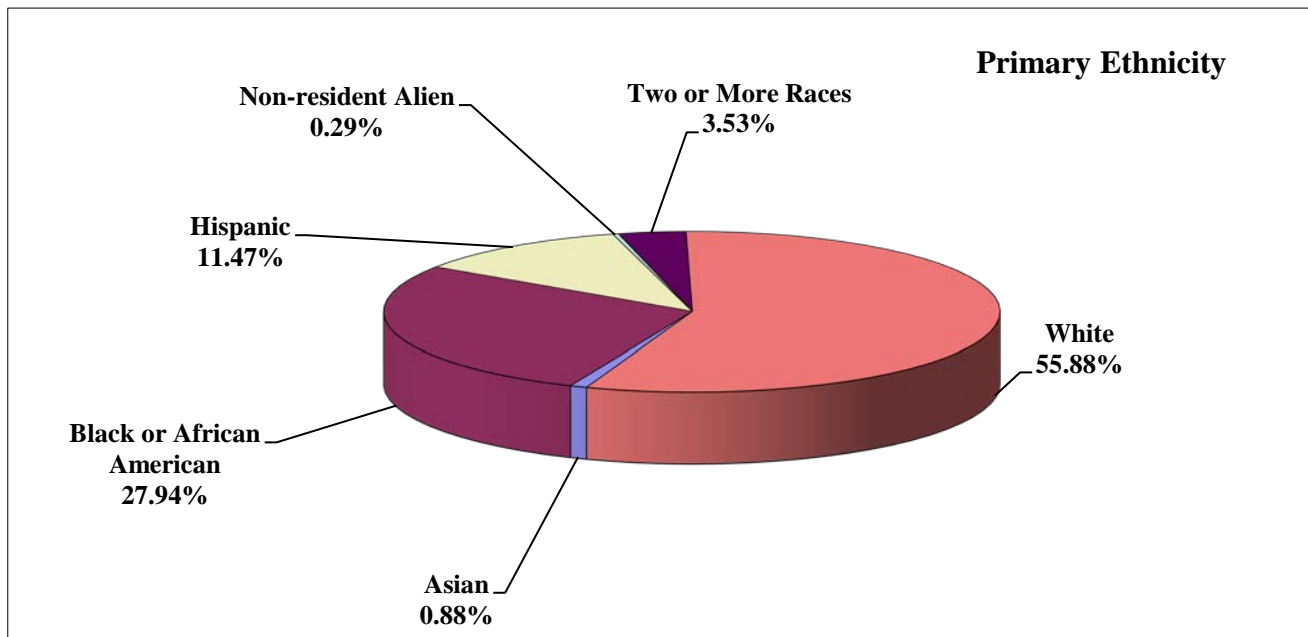
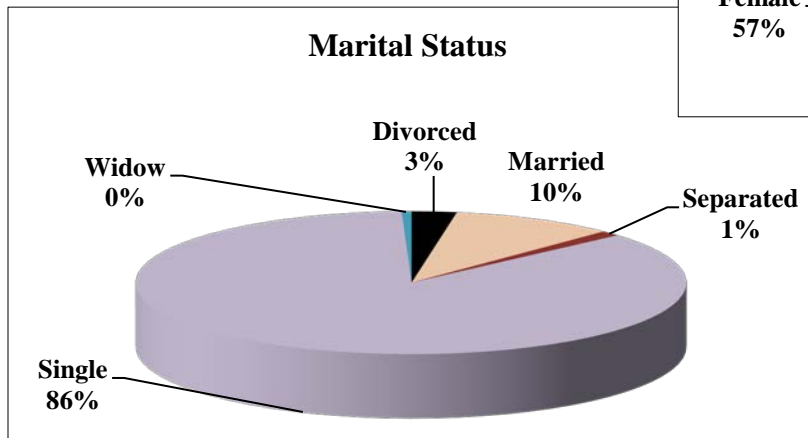
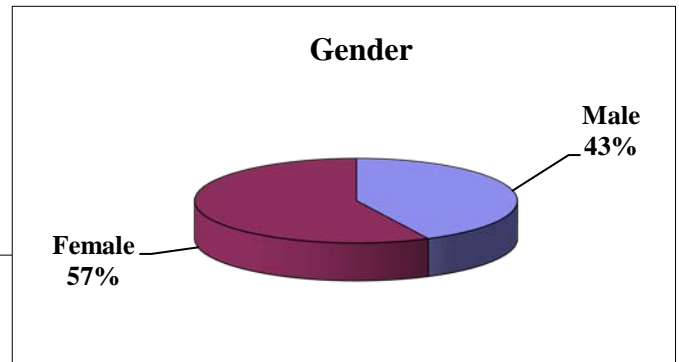
Note: All Web Assisted for the fall 2020 semester are set up as hybrid courses.

Demographic Data

Gender	Count	Credits	Percent
Male	146	2049	42.69%
Female	196	2409	57.31%
	342	4458	100%

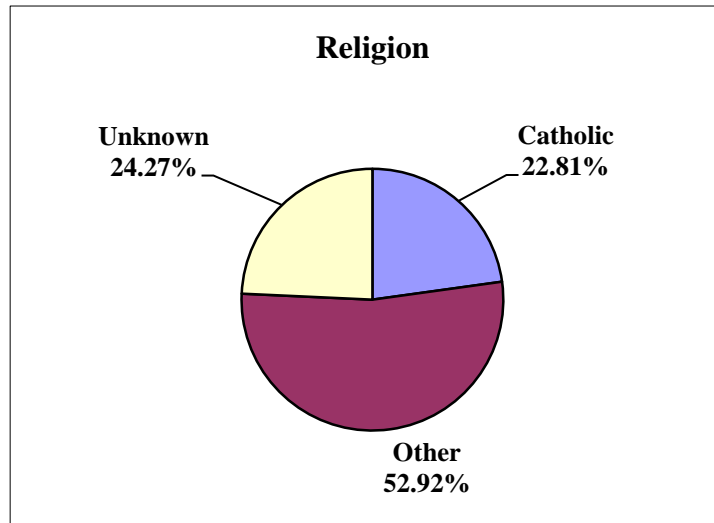
Primary Ethnicity	Count	Percent
American Indian/Alaskan Native	2	0.58%
Asian	3	0.88%
Black or African American	95	27.78%
Hispanic	39	11.40%
Non-resident Alien	1	0.29%
Two or More Races	12	3.51%
White	190	55.56%
	342	100.00%

Marital Status	Count	Credits	Percent
Divorced	9	95	2.63%
Married	33	340	9.65%
Separated	4	43	1.17%
Single	294	3958	85.96%
Widow	2	22	0.58%
	342	4458	100%

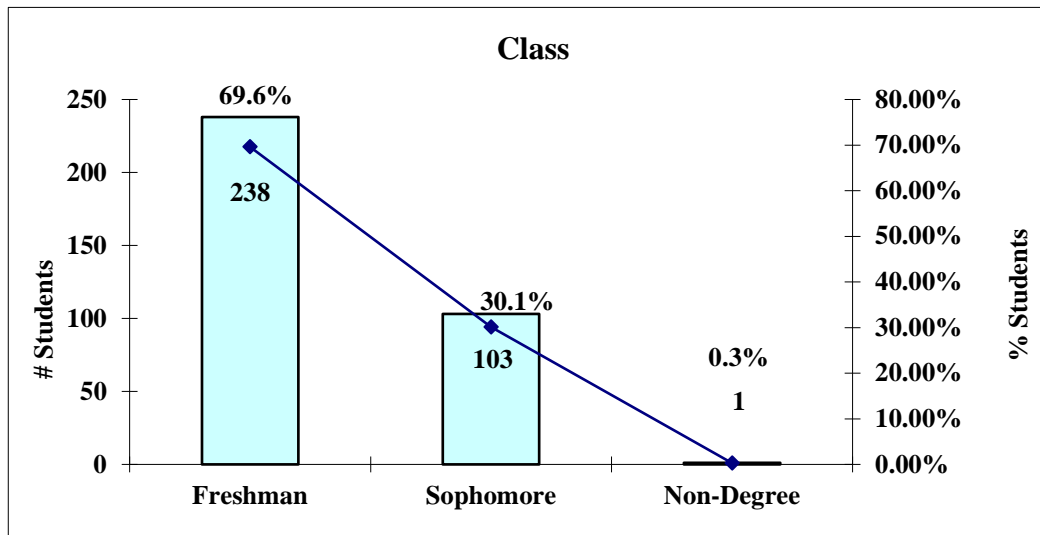


Demographic Data

Religion	
	Count
Baptist	25
Catholic	78
Christian	3
Lutheran	11
Mennonite	4
Methodist	12
No Religious Affiliation	36
Non-Catholic	1
Non-Denominational	35
Other	52
Pentecostal	1
Presbyterian	1
Unknown Religion	83
Total	342



Religion		
Catholic	78	22.81%
Other	181	52.92%
Unknown	83	24.27%
Total	342	100%



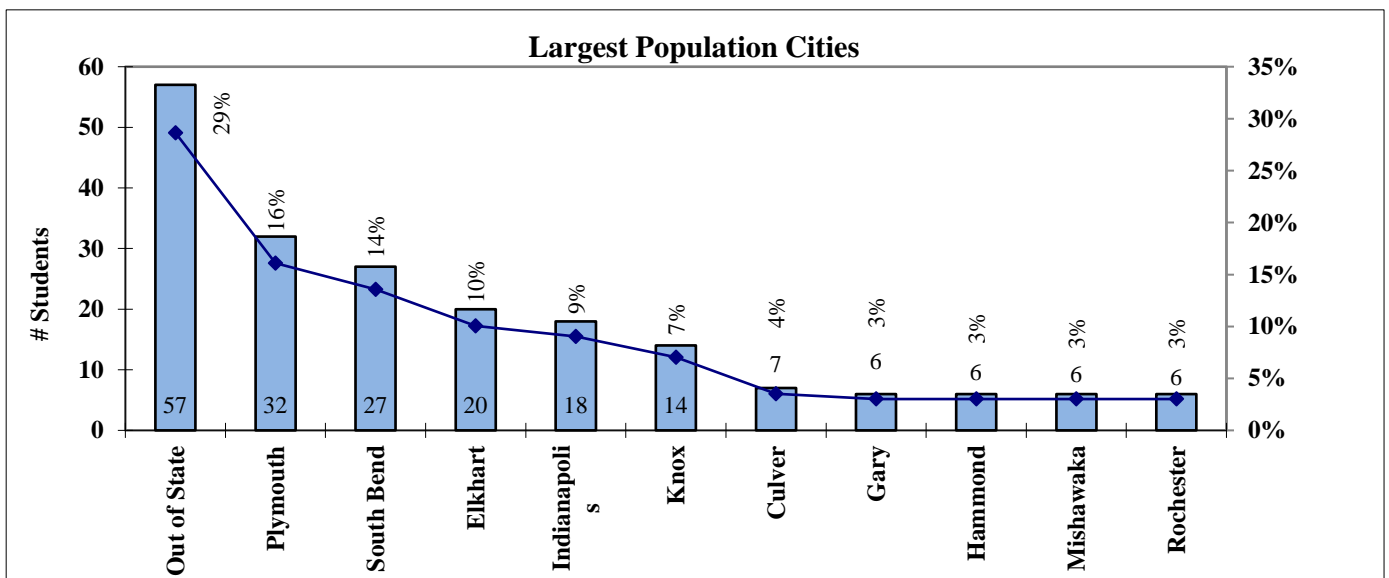
Entry Code	Class			Total	Percent
	Freshman	Sophomore	Non-Degree		
New	113	1	0	114	33.33%
Re-entry	5	11	0	16	4.68%
Early Bird	0	0	1	1	0.29%
Guest	0	0	0	0	0.00%
Transfer	39	0	0	39	11.40%
WBIY	0	0	0	0	0.00%
Dual Credit	0	0	0	0	0.00%
Audit	0	0	0	0	0.00%
Continuing	81	91	0	172	50.29%
Total	238	103	1	342	100.00%
Percent	69.59%	30.12%	0.29%		

Demographic Data: Headcount by City of Permanent Residence

City	Count	City	Count	City	Count
Akron	1	Goshen	3	Martinsville	1
Anderson	2	Granger	1	Medaryville	1
Argos	2	Griffith	1	Merrillville	4
Aurora	2	Grovertown	1	Michigan City	3
Bainbridge	1	Hamlet	1	Middlebury	1
Bloomington	3	Hammond	6	Mill Creek	1
Bordon	1	Hanover	1	Millersburg	1
Bremen	5	Hebron	1	Mishawaka	6
Bristol	1	Hobart	1	Monterey	3
Brownsburg	1	Indianapolis	18	Monterey Indiana	1
Cambridge City	1	Kingsford Heights	1	Munster	2
Camden	1	Knox	14	Nappanee	2
Carmel	1	Kokomo	1	New Carlisle	2
Columbia City	1	LA Porte	3	New Paris	1
Columbus	1	Lafayette	4	North Judson	4
Crown Point	3	LaGrange	1	North Liberty	2
Culver	7	Lagro	1	Ora	1
Culver, IN	1	Lakeville	1	Osceola	4
Danville	2	Lansing	3	Peru	2
Delphi	1	LaPorte	5	Plymouth	32
Demotte	1	Lebanon	3	Portage	3
Donaldson	1	Liberty	1	Remington	1
Elkhart	20	Ligonier	1	Rochester	6
Elwood	1	Logansport	2	Rolling Prairie	1
Fishers	1	Lowell	1	Rolling Prairie	2
Fort Wayne	1	Lucerne	1	Rossville	1
Gary	6	Lyons	1	South Bend	27
Gas City	1	Macy	1	Syracuse	1

City	Count
Tippecanoe	1
Valparaiso	3
Wabash	1
Walkerton	4
Wanatah	2
West Lafayette	1
Westfield	1
Wheatfield	1
Winamac	5
Wolcott	1
Out of State	57
Total Count	342

Largest Population by City		
Out of State	57	29%
Plymouth	32	16%
South Bend	27	14%
Elkhart	20	10%
Indianapolis	18	9%
Knox	14	7%
Culver	7	4%
Gary	6	3%
Hammond	6	3%
Mishawaka	6	3%
Rochester	6	3%
Totals	199	100%

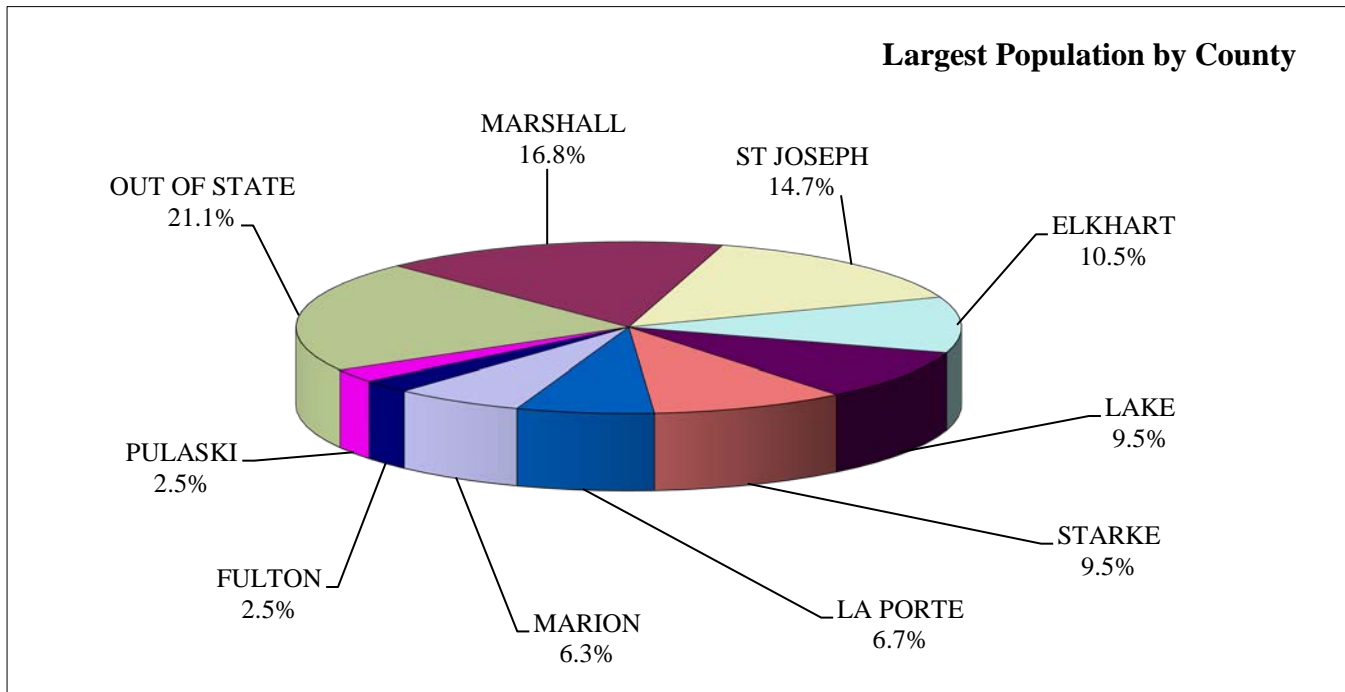


Demographic Data: Headcount by County of Original Residence

Counties	Count
ADAMS	1
ALLEN	1
BARTHOLOMEW	1
BOONE	3
CARROLL	2
CASS	3
CLARK	1
CLINTON	1
DEARBORN	1
ELKHART	30
FULTON	7
GRANT	1
GREENE	1
HAMILTON	3
HENDRICKS	2
HENRY	2
HOWARD	1
JASPER	3
JEFFERSON	1
LA PORTE	19
LAGRANGE	1
LAKE	27
MADISON	3
MARION	18
MARSHALL	48
MIAMI	3
MONROE	2
MORGAN	1
NOBLE	1

Counties	Count
PORTER	6
PULASKI	7
PUTNAM	1
ST JOSEPH	42
STARKE	27
TIPPECANOE	5
UNION	1
WABASH	2
WAYNE	1
WHITE	1
FOREIGN	1
OUT OF STATE	60
Total	342

Largest Population by County		
Counties	Count	%
OUT OF STATE	60	21.1%
MARSHALL	48	16.8%
ST JOSEPH	42	14.7%
ELKHART	30	10.5%
LAKE	27	9.5%
STARKE	27	9.5%
LA PORTE	19	6.7%
MARION	18	6.3%
FULTON	7	2.5%
PULASKI	7	2.5%
Total	285	100%



Demographic Data

Country of Birth

Birth Country	Count
Canada	1
China	1
Dominican Republic	1
haiti	1
Kenya	1
Mexico	4
Myanmar (Burma)	1
Malawi	1
Nigeria	1
United States	330
Total	342

Country of Citizenship

Citizenship Country	Count
Canada	1
Mexico	2
Myanmar (Burma)	1
United States	338
Total	342

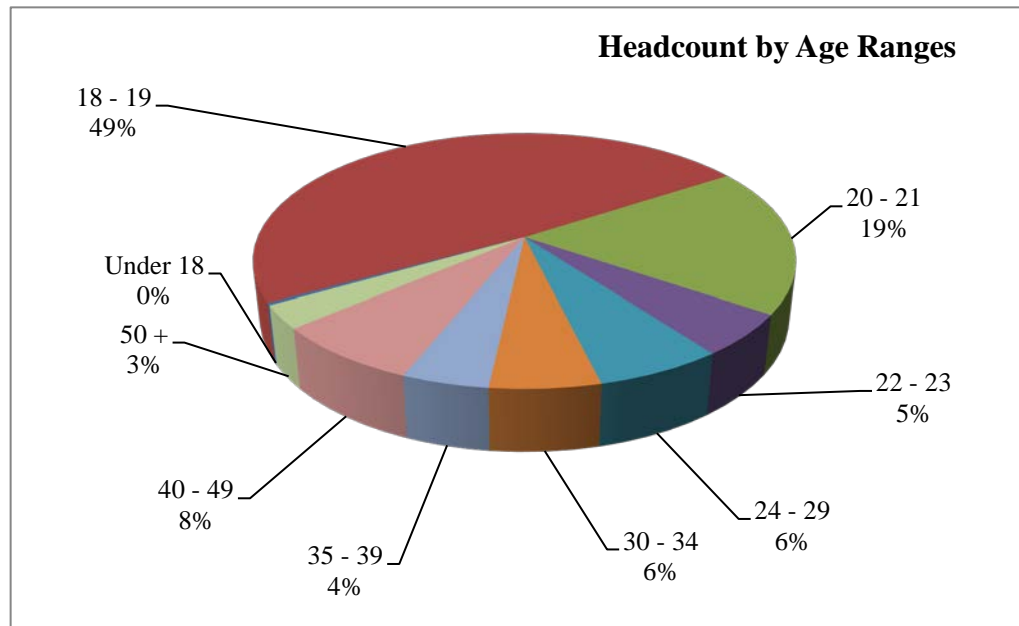
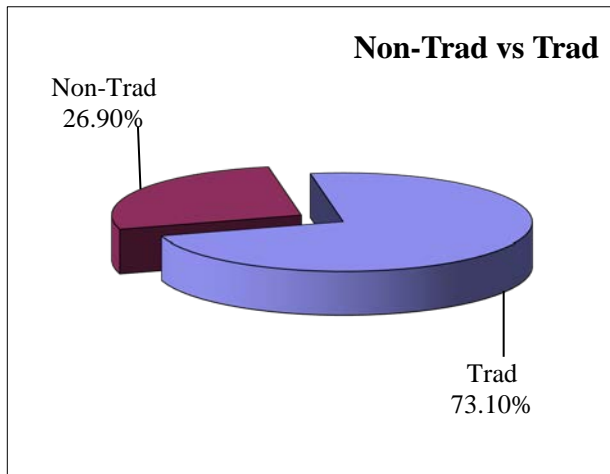
Residence Country	Count
United States	342

Demographic Data: Student Ages

Headcount by Age	
Age Range	Count
Under 18	1
18 - 19	167
20 - 21	64
22 - 23	18
24 - 29	22
30 - 34	19
35 - 39	15
40 - 49	26
50 +	10
Total	342

	Count	Percent	Average Age
Trad	250	73.10%	19.29
Non-Trad	92	26.90%	37.29
	342	100.00%	

Average Age			
Semester & Code	All	Non-Trad	Trad
Fall 2014 - 20151	23.42	35.33	19.12
Fall 2015 - 20161	22.22	18.77	35.20
Fall 2016 - 20171	21.90	33.70	18.90
Fall 2017 - 20181	18.83	33.81	21.53
Fall 2018 - 20191	23.23	36.65	18.79
Fall 2019 - 20201	23.42	36.75	18.77
Fall 2020 - 20211	23.42	36.75	18.77



Demographic Data

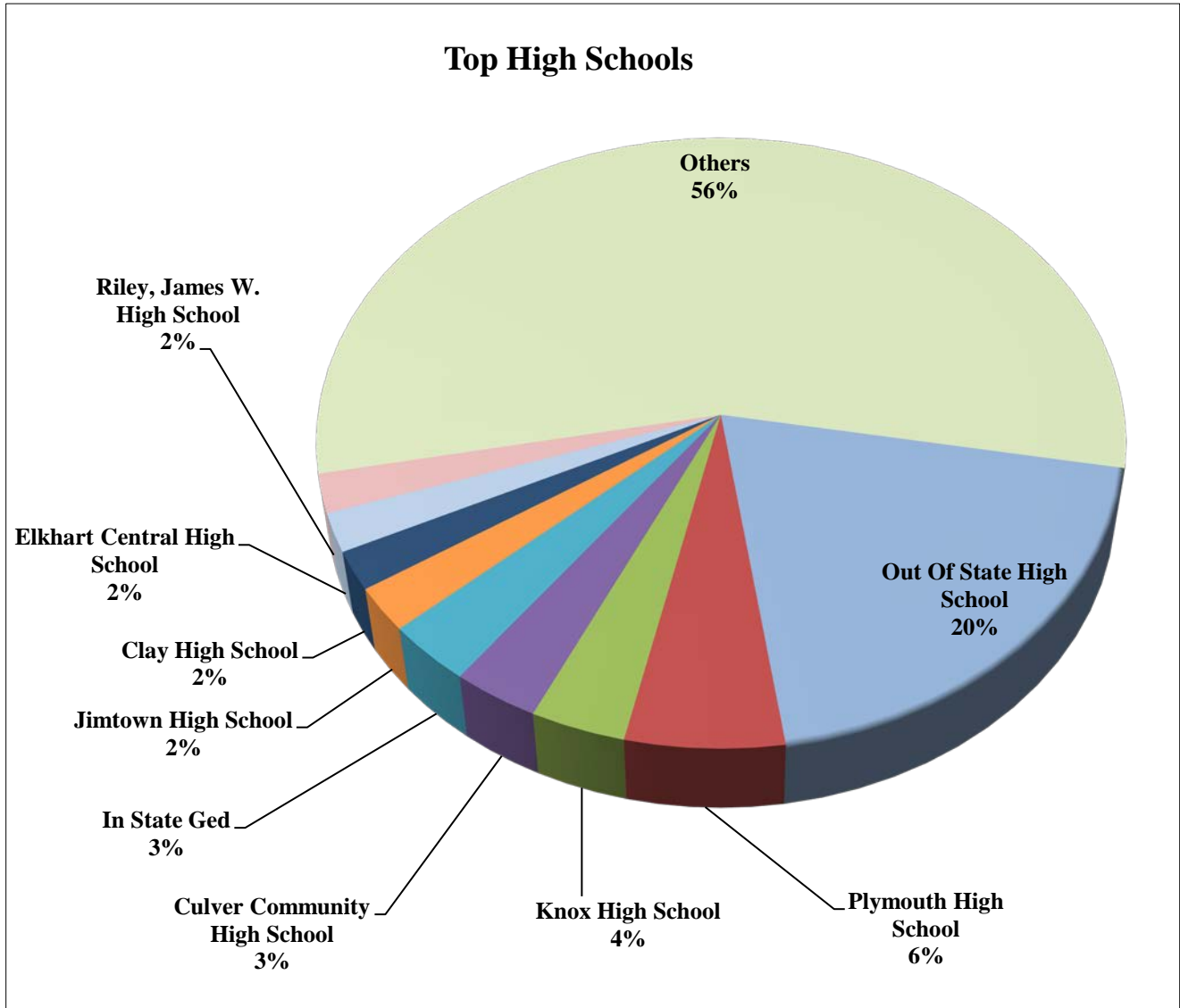
High Schools - All Ancilla Students

High Schools - All Students			High Schools - All Students		
	Code	Count		Code	Count
<u>High School Name</u>	<u>HS Code</u>	<u>HC</u>	<u>High School Name</u>	<u>HS Code</u>	<u>HC</u>
Academy Plus	150443	1	Lasalle High School	153262	2
Anderson High School	150043	1	Laville High School	151970	6
Argos High School	150090	4	Lebanon High School	152025	3
Arsenal Technical Hs	151645	1	Lew Wallace High School	151250	2
Bishop Chatard	151654	1	Liberty Christian School	150046	1
Bloomington North Hs	150220	1	Lincoln Hs, Cambridge City	150415	1
Bloomington South Hs	150215	1	Logansport High School	152095	2
Boone Grove High School	150245	2	Lowell High School	152115	1
Borden Hs, William W	150255	1	Maconaquah High School	150380	1
Bremen High School	150290	6	Marian High School	152343	5
Broad Ripple H.S.	151655	1	Mccutcheon High School	151936	1
Brownsburg Hs	150335	1	Memorial, Elkhart High School	150916	1
Calument H S Gary In	151230	1	Merrillville High School	150690	4
Carmel H. S.	150445	1	Michigan City High School	152288	2
Carroll Hs	151055	2	Mississinewa High School	151275	1
Caston High School	151210	1	Mooresville High School	152425	1
Central Catholic High School	151906	1	Munster High School	152489	2
Chrysler Hs, New Castle	152533	2	New Prairie High School	152520	5
Clay High School	153275	7	North Central Hs, Indianapolis	151717	2
Columbus East High School	150608	1	North Judson-San Pierre H. S.	152625	5
Concord High School	150910	2	North Miami High School	150803	1
Culver Academies	150695	1	North Putnam High School	152995	1
Culver Community High School	150693	11	Northwood High School	152495	3
Danville High School	150740	1	Norwell High School	152710	1
Delphi Com H S Delphi In	150795	2	Oregon-Davis High School	151430	3
Elkhart Central High School	150915	7	Out Of State Ged	159998	6
Elwood H.S.	150930	1	Out Of State High School	159994	68
Emerson Visual & Performing Ar	151235	1	Out Of State Home School	159992	1
Fairfield High School	151316	4	Penn High School	152347	2
Foreign High School	159995	5	Perry Meridian High School	151724	2
Foundations Christian School	152886	1	Pike High School, Indianapolis	152510	1
Franklin Central High School	153665	2	Plymouth High School	152885	20
Gavit, Donald E. High School	151443	2	Riley, James W. High School	153255	7
George Washington Cmty School	151681	1	Rise Up Academy (Bendix, Sb Alternative)	153240	1
Goshen High School	151315	3	Rochester High School	153020	2
Greenwood Christian Academy	151391	1	Roosevelt High School	151255	2
Griffith Hs, Griffith, In	151405	1	Rossville High School	153065	1
Herron High School	151669	1	South Bend Washington HS	153280	3
Horace Mann High School	151245	2	South Central High School	153530	1
In State Ged	159999	11	South Dearborn High School	150120	1
In State Home School	159993	1	South Side HS, Fort Wayne	151110	1
Indiana Connections Academy	151684	1	Southwestern Hs, Hanover	151465	1
Indiana School For The Deaf	151695	1	St Josephs HS, South Bend	153265	1
Irvington Preparatory Academy	151729	2	Tippecanoe Valley High School	152255	1
Jefferson HS, Lafayette	151910	1	Tri-County High School	153865	2
Jimtown High School	150905	8	Triton High School	150270	2
John Adams High School	153260	6	Twin Lake H.S.	152400	1
John Glenn High School	153655	5	Union County Hs, Liberty	152065	1
Kankakee Valley High School	153780	3	Valparaiso High School	153565	2
Knox High School	151870	12	Wabash High School	153625	2
Lacrosse High School	151895	1	West Noble Hs Ligonier In	152075	1
Laporte High School	151990	6	Western H.S. Russiaville, In	153095	1

Demographic Data

High Schools - All Ancilla Students

High Schools - All Students	Code	Count	High Schools - All Students	Code	Count
Westfield Washington Hs	153735	1	White River Valley High School	153385	1
Westview High School, Topeka	153480	1	Winamac Community High School	153842	3
Westville H.S.	153775	1			
				Total:	342



Demographic Data

High Schools - New to Ancilla Students*

*includes: New - transfers, WBIY, guests, early birds, dual credit, or first time college students.

School Name	Count
Academy Plus	1
Argos High School	3
Arsenal Technical Hs	1
Bloomington North Hs	1
Bloomington South Hs	1
Bremen High School	1
Broad Ripple H.S.	1
Brownsburg Hs	1
Carmel H. S.	1
Caston High School	1
Chrysler Hs, New Castle	1
Clay High School	5
Columbus East High School	1
Concord High School	2
Culver Academies	1
Culver Community High School	4
Delphi Com H S Delphi In	1
Elkhart Central High School	5
Fairfield High School	2
Foreign High School	1
Franklin Central High School	2
George Washington Cmty School	1
Goshen High School	1
Griffith Hs, Griffith, In	1
In State Ged	1
In State Home School	1
Irvington Preparatory Academy	1
Jimtown High School	7
John Adams High School	2
Kankakee Valley High School	2
Knox High School	1
Laporte High School	3
Lasalle High School	2
Laville High School	3
Lebanon High School	3
Lew Wallace High School	1
Lincoln Hs, Cambridge City	1
Lowell High School	1
Marian High School	2
Memorial, Elkhart High School	1
Merrillville High School	1
Michigan City High School	1
Mississinewa High School	1

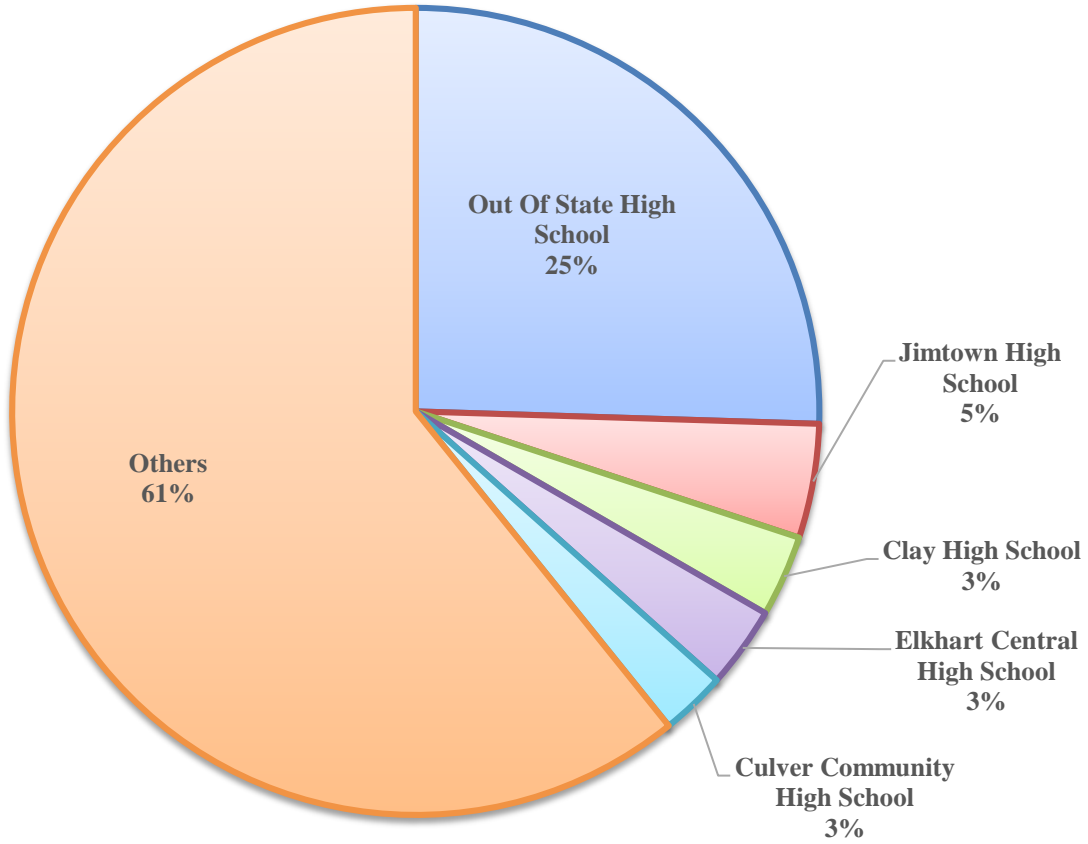
School Name	Count
Mooresville High School	1
Munster High School	2
New Prairie High School	3
North Central Hs, Indianapolis	1
North Judson-San Pierre H. S.	2
North Putnam High School	1
Northwood High School	3
Norwell High School	1
Oregon-Davis High School	3
Out Of State Ged	2
Out Of State High School	39
Penn High School	1
Perry Meridian High School	2
Plymouth High School	2
Riley, James W. High School	3
Rochester High School	1
Roosevelt High School	2
Rossville High School	1
South Bend Washington HS	1
St Josephs HS, South Bend	1
Triton High School	1
Valparaiso High School	1
Wabash High School	1
Westfield Washington Hs	1
Westview High School, Topeka	1
Winamac Community High School	1
Total Students New to Ancilla*	153

Demographic Data Continued

High Schools - New to Ancilla Students*

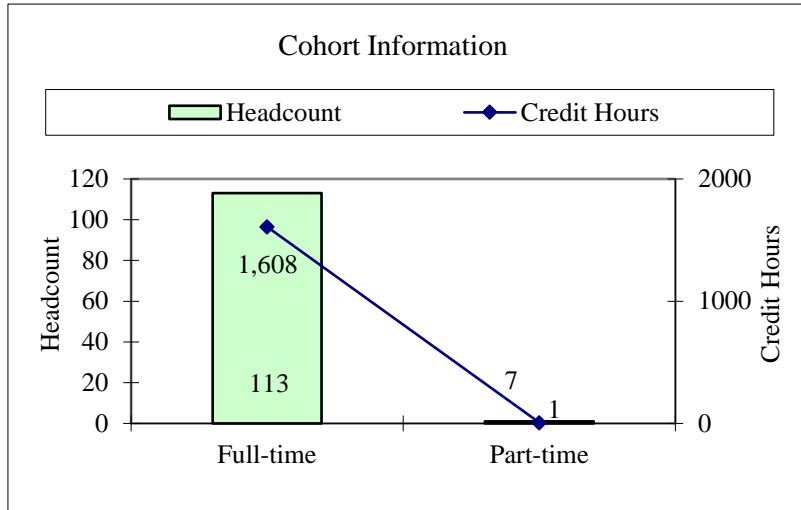
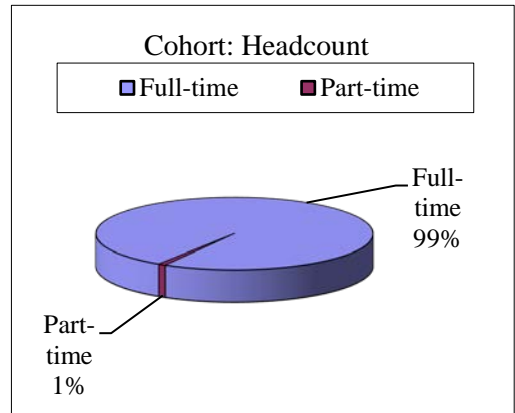
*includes: New - transfers, WBIY, guests, early birds, dual credit, or first time college students.

Top High Schools for New to Ancilla Students

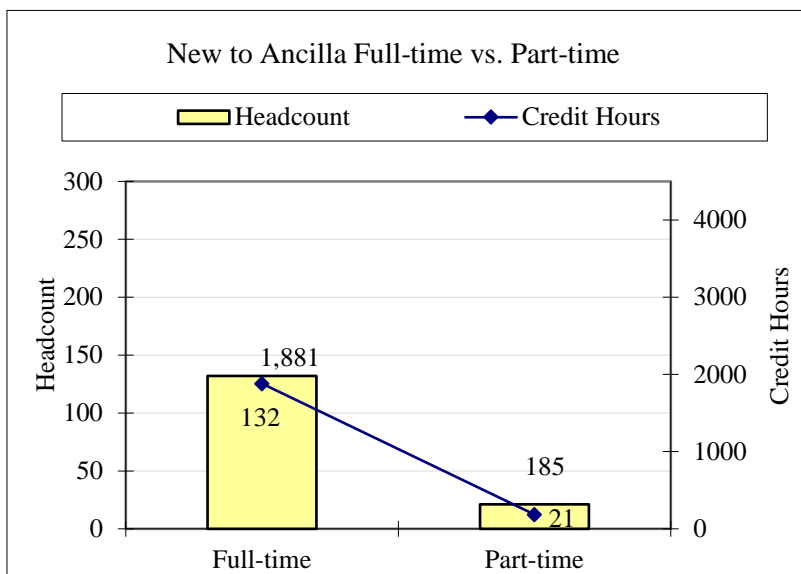
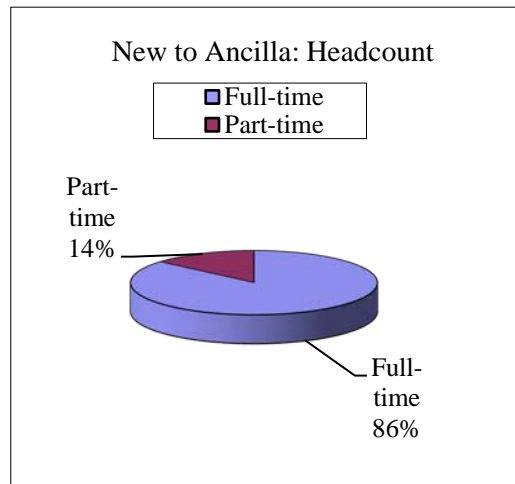


Cohort Information (First Time - Students)

Cohort Information		
	Headcount	Credit Hours
Full-time	113	1608
Part-time	1	7
Total	114	1615



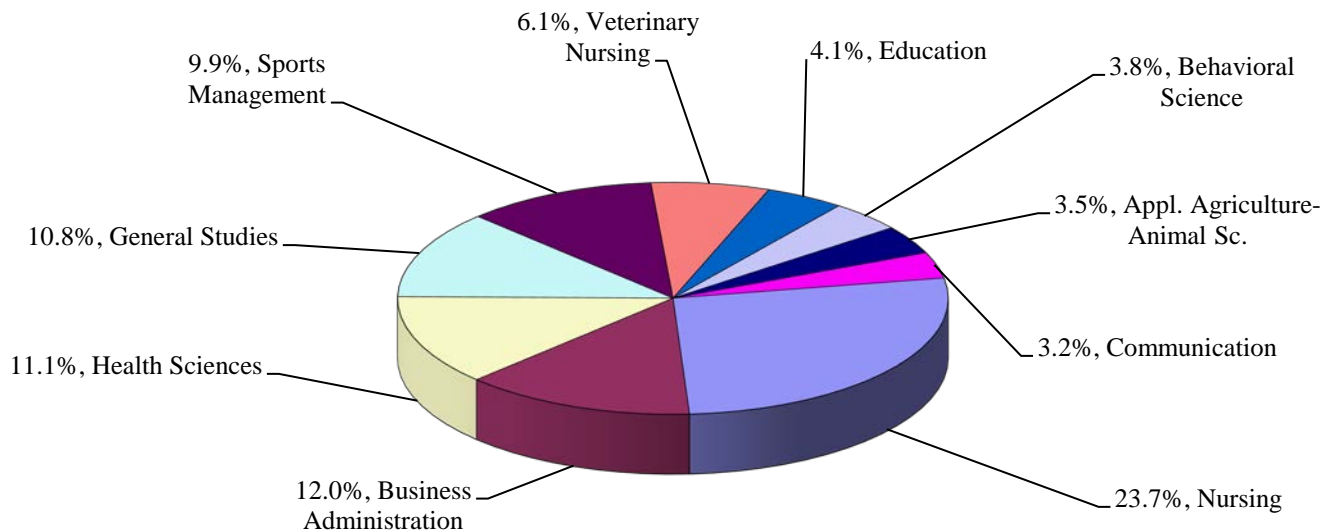
New to Ancilla Full-time vs. Part-time		
	Headcount	Credit Hours
Full-time	132	1881
Part-time	21	185
Total	153	2066



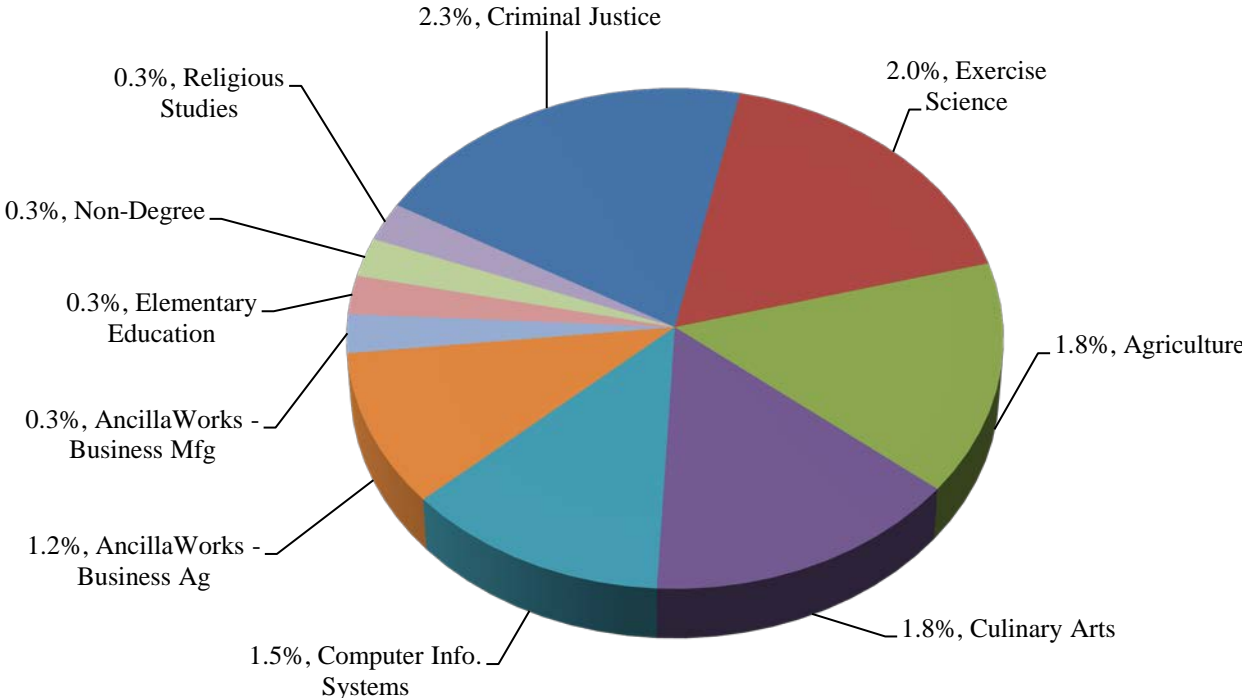
Concentration Information

Concentration	Totals	%	Non-Trad	Trad	Fulltime	Part-time	Freshman	Sophomore	Non-Degree
Agriculture	6	1.8%	0	6	6	0	5	1	0
AncillaWorks - Business Ag	4	1.2%	1	3	4	0	4	0	0
AncillaWorks - Business Mfg	1	0.3%	0	1	1	0	1		0
Appl. Agriculture-Animal Sc.	12	3.5%	0	12	12	0	10	2	0
Behavioral Science	13	3.8%	3	10	12	1	7	6	0
Business Administration	41	12.0%	2	39	39	2	34	7	0
Communication	11	3.2%	0	11	11	0	10	1	0
Computer Info. Systems	5	1.5%	0	5	5	0	3	2	0
Criminal Justice	8	2.3%	2	6	6	2	6	2	0
Culinary Arts	6	1.8%	0	6	6	0	4	2	0
Early Childhood	0	0.0%	0	0	0	0	0	0	0
Education	14	4.1%	1	13	13	1	10	4	0
Elementary Education	1	0.3%	1	0	0	1	0	1	0
English	0	0.0%	0	0	0	0	0	0	0
Environmental Technology	0	0.0%	0	0	0	0	0	0	0
Exercise Science	7	2.0%	1	6	7	0	7	0	0
General Studies	37	10.8%	1	36	36	1	30	7	0
Health Sciences	38	11.1%	11	27	29	9	35	3	0
History	0	0.0%	0	0	0	0	0	0	0
Hospitality & Tourism	0	0.0%	0	0	0	0	0	0	0
Logistics & Transportation	0	0.0%	0	0	0	0	0	0	0
Mass Communication	0	0.0%	0	0	0	0	0	0	0
Non-Degree	1	0.3%	0	1	0	1	0	0	1
Nursing	81	23.7%	67	14	19	62	26	55	0
Professional Health Studies	0	0.0%	0	0	0	0	0	0	0
Pursuing Degree Elsewhere	0	0.0%	0	0	0	0	0	0	0
Religious Studies	1	0.3%	0	1	1	0	0	1	0
Science	0	0.0%	0	0	0	0	0	0	0
Secondary Ed	0	0.0%	0	0	0	0	0	0	0
Sports Management	34	9.9%	0	34	34	0	29	5	0
Theology	0	0.0%	0	0	0	0	0	0	0
Veterinary Nursing	21	6.1%	2	19	21	0	17	4	0
Totals	342	100%	92	250	262	80	238	103	1
Credit Hours	4458		946	3512	3774	684	3272	1184	2

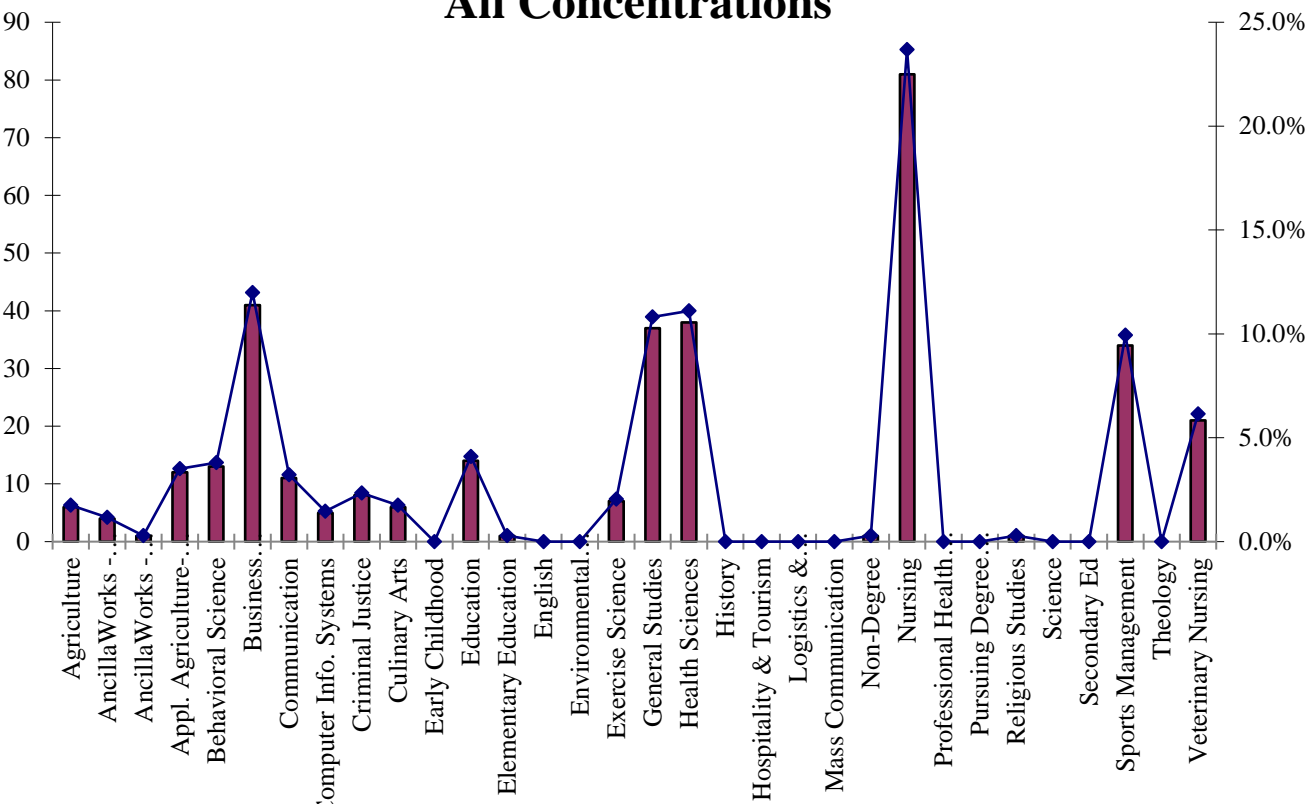
Top Concentrations



Other Concentrations



All Concentrations



Concentration Information

	New	Re-Entry	Audit	Early Bird	Guest	Transfer	WBIY	Dual Credit	Continuing	Total
Concentrations by Entry Code	1	2	3	4	5	6	7	8	0	Count
Agriculture	5	0	0	0	0	0	0	0	1	6
AncillaWorks - Business Ag	2	0	0	0	0	2	0	0	0	4
AncillaWorks - Business Mfg	1	0	0	0	0	0	0	0	0	1
Appl. Agriculture-Animal Sc.	6	1	0	0	0	0	0	0	5	12
Behavioral Science	3	0	0	0	0	0	0	0	10	13
Business Administration	20	2	0	0	0	5	0	0	14	41
Communication	6	0	0	0	0	1	0	0	4	11
Computer Information Systems	2	0	0	0	0	1	0	0	2	5
Criminal Justice	2	1	0	0	0	0	0	0	5	8
Culinary Arts	1	0	0	0	0	0	0	0	5	6
Early Childhood	0	0	0	0	0	0	0	0	0	0
Education	6	0	0	0	0	1	0	0	7	14
Elementary Education	0	0	0	0	0	0	0	0	1	1
English	0	0	0	0	0	0	0	0	0	0
Environmental Technology	0	0	0	0	0	0	0	0	0	0
Exercise Science	5	0	0	0	0	1	0	0	1	7
General Studies	18	0	0	0	0	3	0	0	16	37
Health Sciences	9	3	0	0	0	8	0	0	18	38
History	0	0	0	0	0	0	0	0	0	0
Hospitality & Tourism	0	0	0	0	0	0	0	0	0	0
Logistics & Inventory Systems	0	0	0	0	0	0	0	0	0	0
Mass Communication	0	0	0	0	0	0	0	0	0	0
Non-Degree	0	0	0	1	0	0	0	0	0	1
Nursing	1	7	0	0	0	13	0	0	60	81
Professional Health Studies	0	0	0	0	0	0	0	0	0	0
Pursuing Degree Elsewhere	0	0	0	0	0	0	0	0	0	0
Religious Studies	0	0	0	0	0	0	0	0	1	1
Science	0	0	0	0	0	0	0	0	0	0
Secondary Ed	0	0	0	0	0	0	0	0	0	0
Sports Management	16	1	0	0	0	2	0	0	15	34
Theology	0	0	0	0	0	0	0	0	0	0
Veterinary Nursing	11	1	0	0	0	2	0	0	7	21
Totals	114	16	0	1	0	39	0	0	172	342
Credit Hours	1615	154	0	2	0	451	0	0	2236	4458

Concentration Information Continued

Concentrations by Gender	Female	Percent	Male	Percent	Totals
Agriculture	4	1.17%	2	0.58%	6
AncillaWorks - Business Ag	1	0.29%	3	0.88%	4
AncillaWorks - Business Mfg	0	0.00%	1	0.29%	1
Appl. Agriculture-Animal Sc.	11	3.22%	1	0.29%	12
Behavioral Science	11	3.22%	2	0.58%	13
Business Administration	11	3.22%	30	8.77%	41
Communication	4	1.17%	7	2.05%	11
Computer Information Systems	0	0.00%	5	1.46%	5
Criminal Justice	2	0.58%	6	1.75%	8
Culinary Arts	2	0.58%	4	1.17%	6
Early Childhood	0	0.00%	0	0.00%	0
Education	8	2.34%	6	1.75%	14
Elementary Education	1	0.29%	0	0.00%	1
English	0	0.00%	0	0.00%	0
Environmental Technology	0	0.00%	0	0.00%	0
Exercise Science	2	0.58%	5	1.46%	7
General Studies	8	2.34%	29	8.48%	37
Health Sciences	32	9.36%	6	1.75%	38
History	0	0.00%	0	0.00%	0
Hospitality & Tourism	0	0.00%	0	0.00%	0
Logistics & Inventory Systems	0	0.00%	0	0.00%	0
Mass Communication	0	0.00%	0	0.00%	0
Non-Degree	0	0.00%	1	0.29%	1
Nursing	74	21.64%	7	2.05%	81
Professional Health Studies	0	0.00%	0	0.00%	0
Pursuing Degree Elsewhere	0	0.00%	0	0.00%	0
Religious Studies	1	0.29%	0	0.00%	1
Science	0	0.00%	0	0.00%	0
Secondary Ed	0	0.00%	0	0.00%	0
Sports Management	3	0.88%	31	9.06%	34
Theology	0	0.00%	0	0.00%	0
Veterinary Nursing	21	6.14%	0	0.00%	21
Totals	196	57.31%	146	42.69%	342

Concentration Information

Concentrations by Class	Freshman	Sophomore	Unclassified	Total	CIP Code
Agriculture	5	1	0	6	01.0000
AncillaWorks - Business Ag	4	0	0	4	01.0000
AncillaWorks - Business Mfg	1	0	0	1	52.0201
Appl. Agriculture-Animal Sc.	10	2	0	12	01.0901
Behavioral Science	7	6	0	13	30.1701
Business Administration	34	7	0	41	52.0201
Communication	10	1	0	11	09.0101
Computer Info. Systems	3	2	0	5	11.0101
Criminal Justice	6	2	0	8	43.0104
Culinary Arts	4	2	0	6	NA
Early Childhood	0	0	0	0	NA
Education	10	4	0	14	13.0101
Elementary Education	0	1	0	1	NA
English	0	0	0	0	NA
Environmental Technology	0	0	0	0	NA
Exercise Science	7	0	0	7	31.0505
General Studies	30	7	0	37	24.0101
Health Sciences	35	3	0	38	51.0000
History	0	0	0	0	NA
Hospitality & Tourism	0	0	0	0	NA
Logistics & Transportation	0	0	0	0	NA
Mass Communication	0	0	0	0	NA
Non-Degree	0	0	1	1	NA
Nursing	26	55	0	81	51.3801
Professional Health Studies	0	0	0	0	NA
Pursuing Degree Elsewhere	0	0	0	0	NA
Religious Studies	0	1	0	1	NA
Science	0	0	0	0	NA
Secondary Ed	0	0	0	0	NA
Sports Management	29	5	0	34	52.0299
Theology	0	0	0	0	NA
Veterinary Nursing	17	4	0	21	01.8301
Totals	238	103	1	342	

"NA" CIP codes are majors that are no longer offered, do not require a CIP code, or are combined into another major as a "track".

Traditional - Nontraditional Information

Headcount / Credit Hours					
	Count	%	Cr Hrs	%	Average
Trad	250	73.10%	3512	78.78%	14.05
NonTrad	92	26.90%	946	21.22%	10.28
Totals	342	100.00%	4458	100.00%	13.04

Gender / Credit Hours						
	Male	%	Average	Female	%	Average
Trad	1929	43.27%	14.29	1583	35.51%	13.77
NonTrad	120	2.69%	10.91	826	18.53%	10.20
Totals	2049	45.96%		2409	54.04%	
Average			14.03			12.29

Gender / Headcount				
	Male	%	Female	%
Trad	135	39.47%	115	33.63%
NonTrad	11	3.22%	81	23.68%
Totals	146	42.69%	196	57.31%

Full-time Headcount / Credit Hours					
	Count	%	Cr Hrs	%	Average
Trad	238	69.59%	3435	77.05%	14.43
NonTrad	24	7.02%	339	7.60%	14.13
Totals	262	76.61%	3774	84.66%	14.40

Part-time Headcount / Credit Hours					
	Count	%	Cr Hrs	%	Average
Trad	12	3.51%	77	1.73%	6.42
NonTrad	68	19.88%	607	13.62%	8.93
Totals	80	23.39%	684	15.34%	8.55

Athlete Information

Headcount/Credit Hours

	Male	Female	Total
Headcount	120	62	182
Credit Hours	1741	883	2624

Headcount by Class/Gender

	Male	Female	Total
Freshman	106	50	156
Sophomore	14	12	26
Total	120	62	182

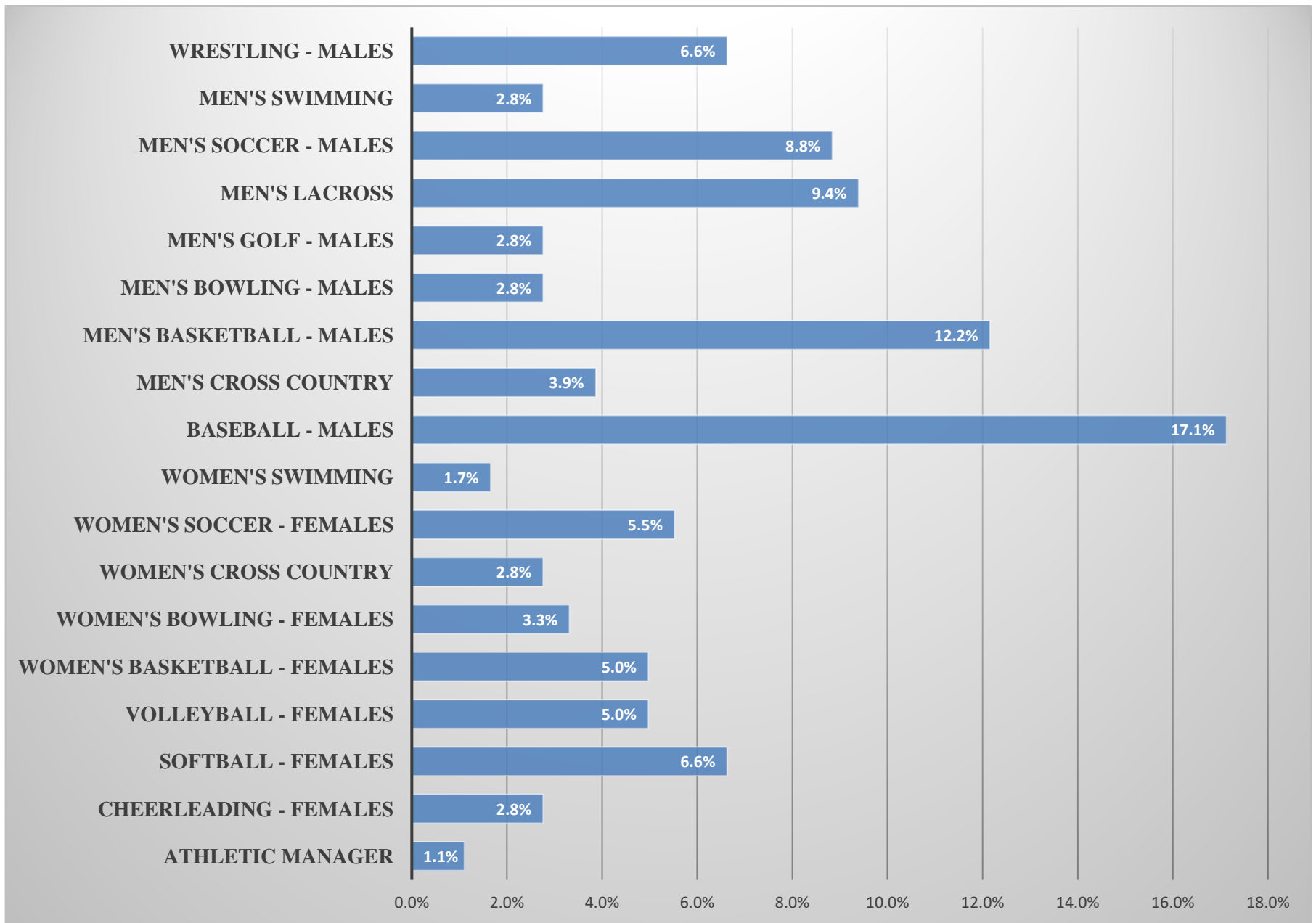
Credit Hours Class/Gender

	Male	Female	Total
Freshman	1541	719	2260
Sophomore	200	164	364
Total	1741	883	2624

Percent of Total Student Population

	Headcount	Cr. Hrs
Total Population	342	4458
% Athletes	53%	59%

Athlete Information Continued



Note: Some athletes participate in multiple sports.

Nursing Information

Credit Hours / Headcount

	Male	Female	Total
Headcount	7	74	81
Credit Hours	62	771	833

Headcount by Class/Gender

	Male	Female	Total
Freshman	3	23	26
Sophomore	4	51	55
Total	7	74	81

Credit Hours by Class/Gender

	Male	Female	Total
Freshman	26	232	258
Sophomore	36	539	575
Total	62	771	833

Percent of Student Population

	Count	Cr. Hrs.
Total Population	342	4458
% Nursing	24%	19%

Headcount by Class and Entry Code

Original Student Entry Code	Freshman	Sophomore	Totals	
			Count	Percent
New	1	0	1	1.23%
Re-entry	2	5	7	8.64%
Guest	0	0	0	0.00%
Transfer	13	0	13	16.05%
Continuing	10	50	60	74.07%
Total	26	55	81	100%
Percent	32.10%	67.90%		

1st Generation Information

Credit Hours / Headcount

1st Generation New to Ancilla	Male	Female	Total
Headcount	41	75	116
Credit Hours	564	912	1476

2020 Fall All New to Ancilla Students

	Headcount	Cr. Hrs.
New to Ancilla Students	49	653
% 1st Generation Students	42.24%	44.24%

2020 Fall Student Population

	Headcount	Cr. Hrs.
Total Population	342	4458
% 1st Generation Students	33.92%	33.11%

Additional Information

Credit Hours by Class/Gender			
	Male	Female	Total
Freshman	1734	1538	3272
Sophomore	313	871	1184
Non-Degree/Unclassified	2	0	2
Total	2049	2409	4458

Headcount by Class/Gender			
	Male	Female	Total
Freshman	120	118	238
Sophomore	25	78	103
Non-Degree/Unclassified	1	0	1
Total	146	196	342

New Non-Degree Audit Students			
	Male	Female	Total
Credit Hours**	0	0	0
Headcount	0	0	0

New Early Bird Students			
	Male	Female	Total
Credit Hours			0
Headcount			0

New Guest Students			
	Male	Female	Total
Credit Hours	0	0	0
Headcount	0	0	0

New Dual Credit Students			
	Male	Female	Total
Credit Hours	0	0	0
Headcount	0	0	0

**Credit Hours of Audit Courses are not included in official counts